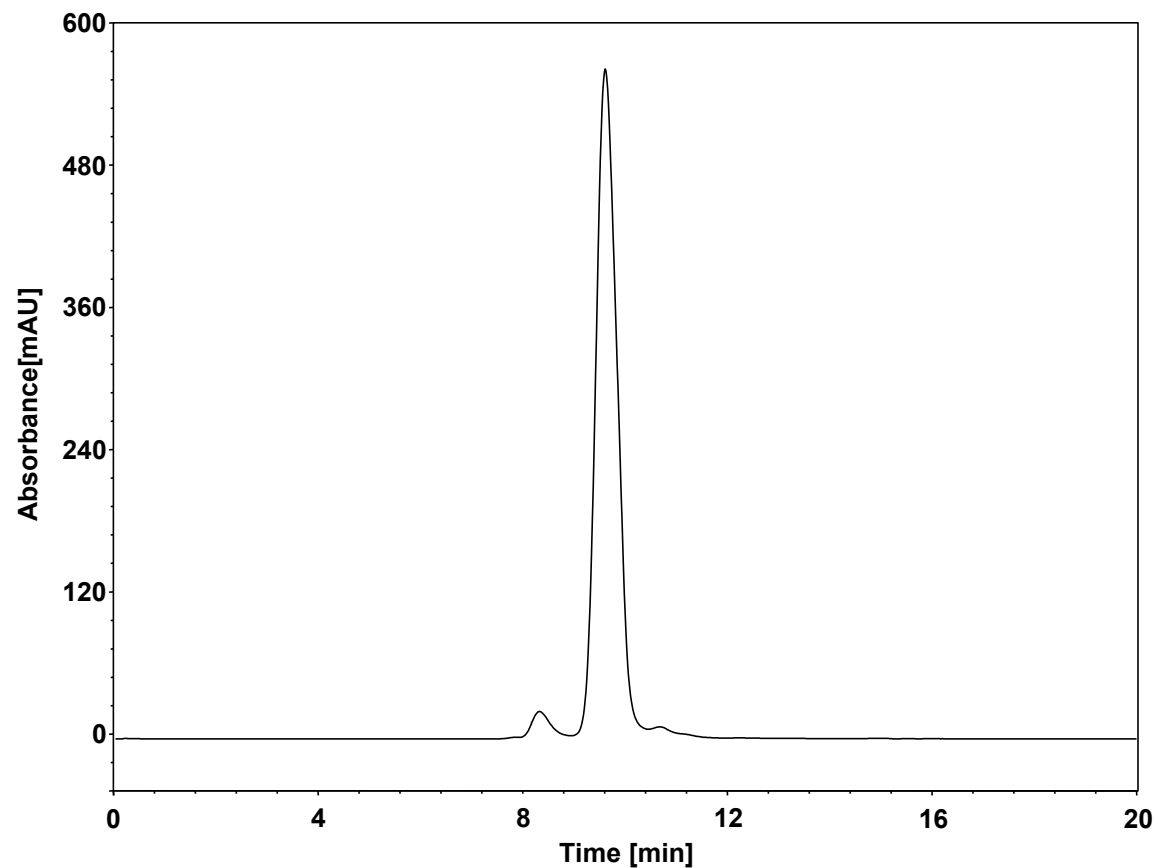
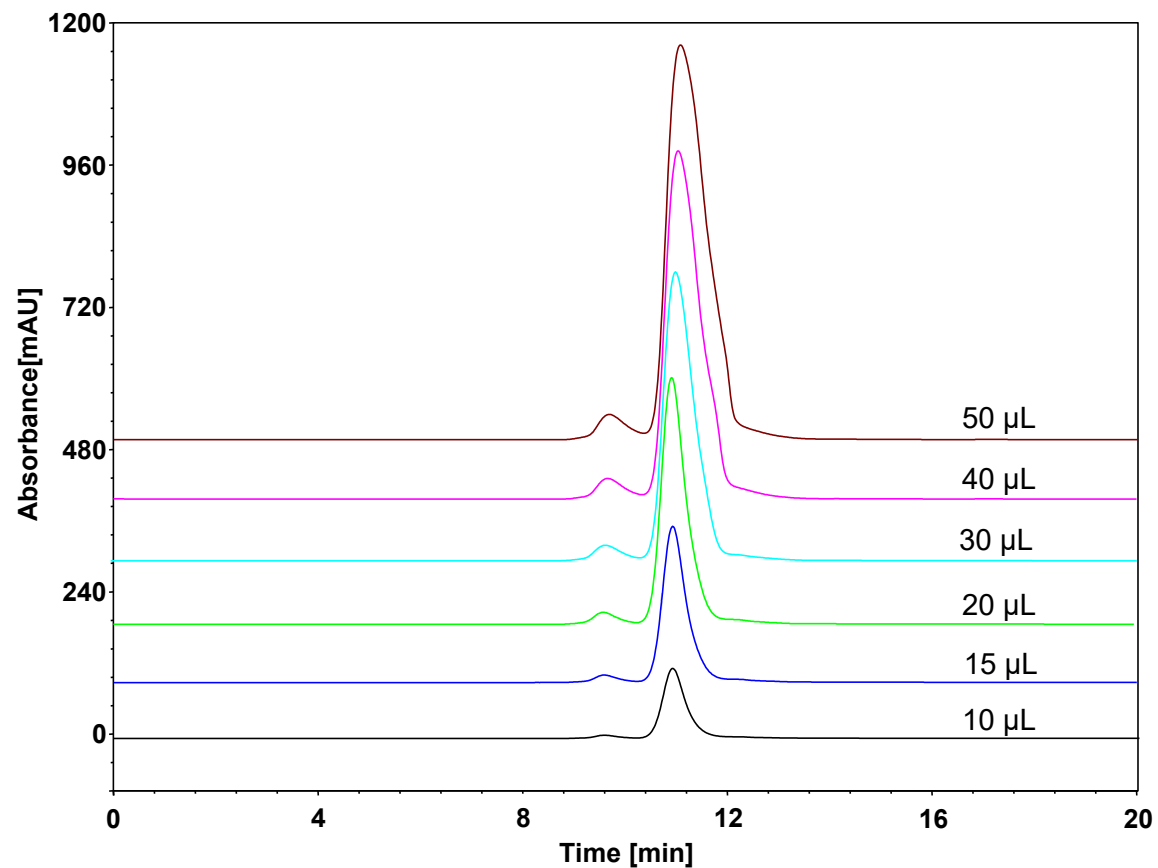


融合蛋白



Column: BioCore SEC-300, 5 μm
Dimension: 7.8 \times 300 mm
Mobile Phase: 100 mM $(\text{NH}_4)_2\text{SO}_4$ in 100 mM phosphate buffer, pH6.8
Flow Rate: 0.7 mL/min
Temperature: 30 $^\circ\text{C}$
Injection: 10 μL
Detection: UV 280 nm
Sample: 融合蛋白 (80 mg/mL)

融合蛋白



Column: BioCore SEC-300, 5 μm
Dimension: 20×300 mm
Mobile Phase: 100 mM Na₂SO₄ in 100 mM phosphate buffer, pH6.8
Flow Rate: 4 mL/min
Temperature: 30 °C
Injection: 10/15/20/30/40/50 μL
Detection: UV 280 nm
Sample: 融合蛋白 (80 mg/mL)