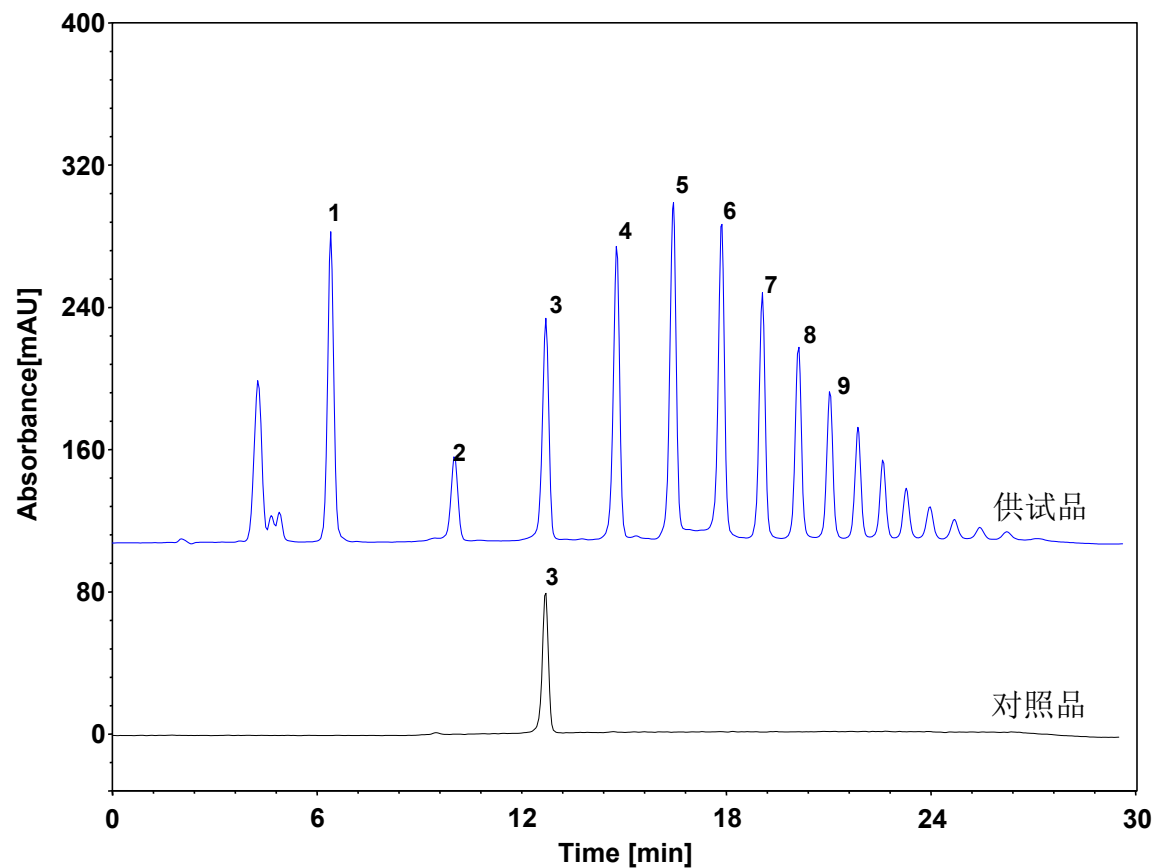


巴戟天配方颗粒-特征图谱



Column: ChromCore HILIC-Amide, 5 μ m

Dimension: 4.6 \times 150 mm

Mobile Phase: A) 乙腈

B) 水

Gradient: t (min) %A %B

0 76 24

5 76 24

20 58 42

24 58 42

26 76 24

30 76 24

Flow Rate: 1.0 mL/min

Temperature: 30 $^{\circ}$ C

Injection: 10 μ L

Detection: ELSD

Sample: 巴戟天配方颗粒

Peaks:

1. 蔗糖

2. 1-蔗糖三糖

3. 耐斯糖

4. 巴戟天寡糖5聚糖