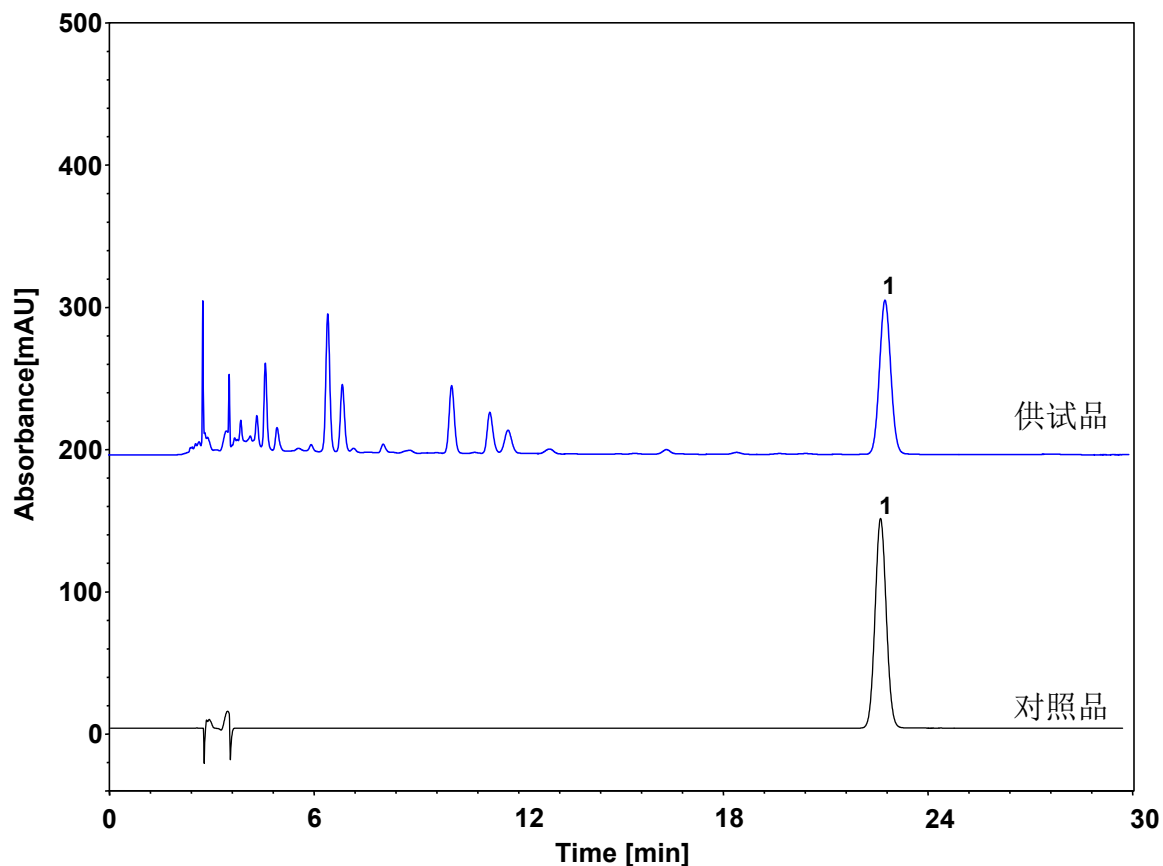
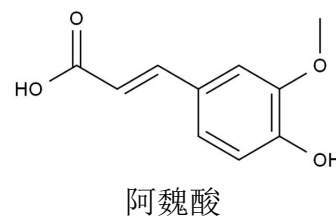


# 川芎配方颗粒-含量测定

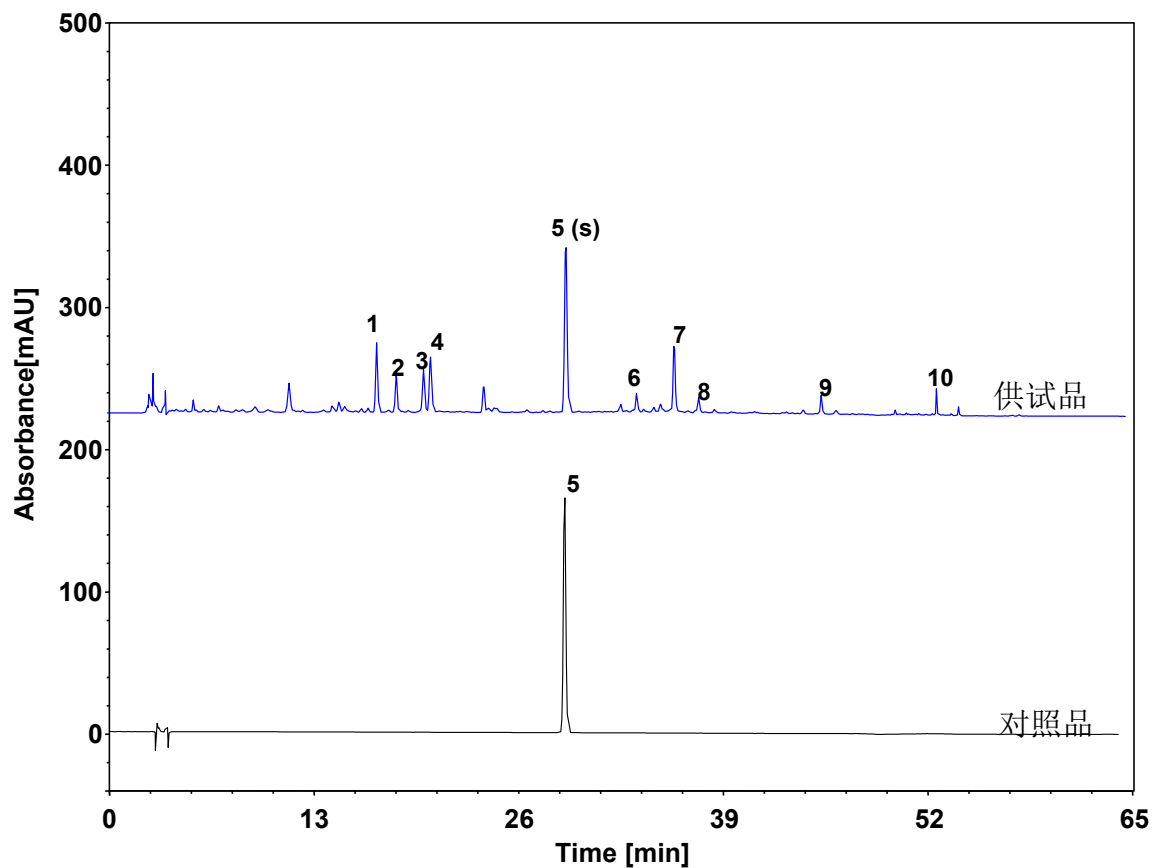


Column: ChromCore 120 C18, 5  $\mu\text{m}$   
Dimension: 4.6  $\times$  250 mm  
Mobile Phase: 15/85 v/v 乙腈/0.1%磷酸水溶液  
Flow Rate: 1.0 mL/min  
Temperature: 25  $^{\circ}\text{C}$   
Injection: 10  $\mu\text{L}$   
Detection: UV 321 nm  
Sample: 川芎配方颗粒  
Peak: 1. 阿魏酸

	保留时间 (min)	理论塔板数	拖尾因子	分离度
对照品	22.808	22362	1.06	/
供试品	22.817	22361	1.05	/



# 川芎配方颗粒-特征图谱



Column: ChromCore 120 C18, 5  $\mu$ m

Dimension: 4.6  $\times$  250 mm

Mobile Phase: A) 乙腈  
B) 0.1%磷酸水溶液

Gradient:	t (min)	%A	%B
	0	8	92
	5	8	92
	25	20	80
	45	40	60
	50	80	20
	65	80	20

Flow Rate: 1.0 mL/min

Temperature: 30  $^{\circ}$ C

Injection: 10  $\mu$ L

Detection: UV 300 nm

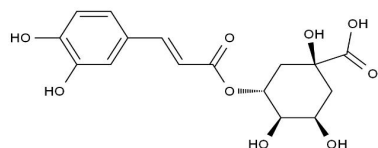
Sample: 川芎配方颗粒

Peaks:

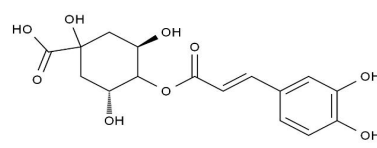
1. 绿原酸
2. 隐绿原酸
3. 咖啡酸
5. 阿魏酸
7. 洋川芎内酯 I
10. 洋川芎内酯 A

# 川芎配方颗粒-特征图谱

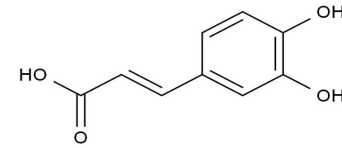
供试品	保留时间 (min)	理论 塔板数	拖尾 因子	分离度	相对保留 时间
绿原酸	17.192	76897	1.05	/	0.587
隐绿原酸	18.433	97230	1.07	5.13	0.630
咖啡酸	20.183	90036	1.03	6.93	0.690
峰4	20.617	81426	1.20	1.55	0.704
阿魏酸	29.267	157194	1.07	29.62	1.000
峰6	33.775	303992	0.79	16.69	1.154
洋川穹内酯 I	36.183	339656	1.09	9.77	1.236
峰8	37.758	369456	0.76	6.34	1.290
峰9	45.567	696115	1.18	33.45	1.557
洋川穹内酯A	52.933	3977313	1.15	45.40	1.809



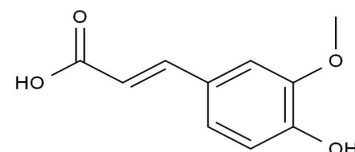
绿原酸



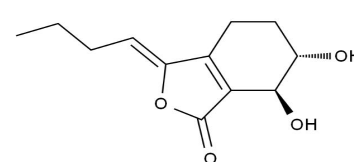
隐绿原酸



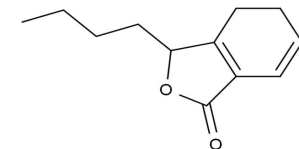
咖啡酸



阿魏酸



洋川穹内酯 I



洋川穹内酯A