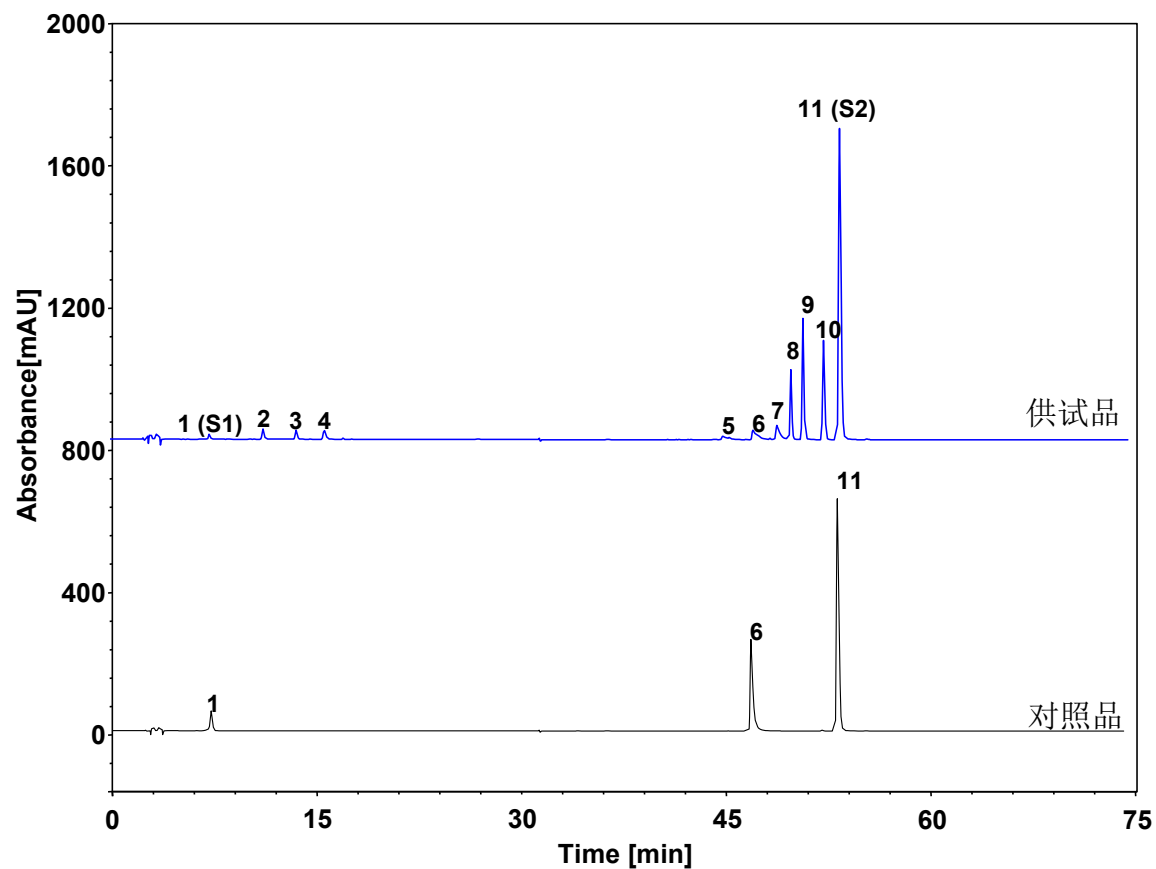


黄连配方颗粒-特征图谱



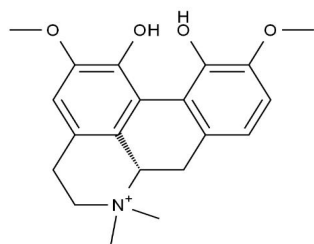
Column: ChromCore 120 C18, 5 μ m
Dimension: 4.6 \times 250 mm
Mobile Phase: A) 乙腈
B) 25 mM 乙酸铵与 8 mM 十二烷基硫酸钠溶液, pH9.3
Gradient:

| t (min) | %A | %B |
|---------|----|----|
| 0 | 10 | 90 |
| 15 | 25 | 75 |
| 25 | 30 | 70 |
| 45 | 50 | 50 |
| 75 | 50 | 50 |

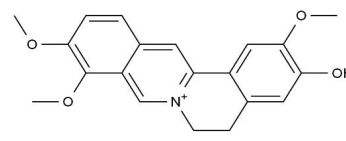
Flow Rate: 1.0 mL/min
Temperature: 30 $^{\circ}$ C
Injection: 20 μ L
Detection: UV 345 nm
Sample: 黄连配方颗粒
Peaks: 1. 木兰花碱
6. 盐酸药根碱
7. 非洲防己碱
8. 表小檗碱
9. 盐酸黄连碱
10. 盐酸巴马汀
11. 盐酸小檗碱

黄连配方颗粒-特征图谱

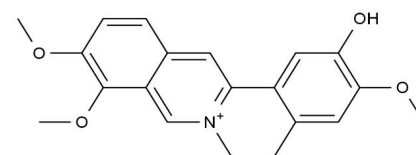
| 供试品 | 保留时间 (min) | 理论 塔板数 | 拖尾 因子 | 分离度 | 相对保 留时间 |
|-------|---------------|-----------|----------|-------|------------|
| 木兰花碱 | 7.300 | 14490 | 1.06 | / | / |
| 峰5 | 45.142 | 59424 | 4.20 | 52.49 | 0.95 |
| 盐酸药根碱 | 47.350 | 72462 | 4.15 | 3.06 | / |
| 非洲防己碱 | 49.117 | 162801 | 2.85 | 2.97 | 0.88 |
| 表小檗碱 | 50.150 | 742888 | 1.17 | 2.87 | 0.90 |
| 盐酸黄连碱 | 51.033 | 764139 | 1.29 | 3.79 | 0.92 |
| 盐酸巴马汀 | 52.550 | 555259 | 1.23 | 5.88 | 0.94 |
| 盐酸小檗碱 | 53.733 | 407272 | 1.42 | 3.83 | 0.95 |



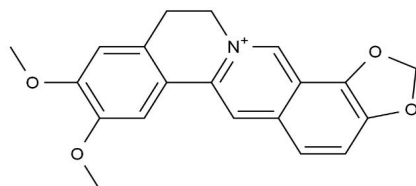
木兰花碱



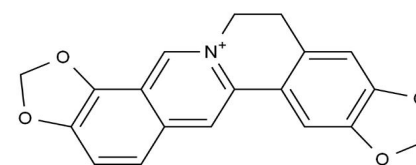
药根碱



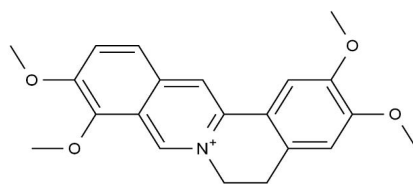
非洲防己碱



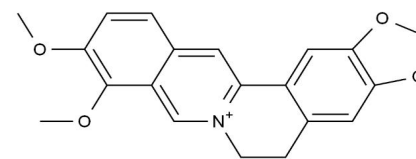
表小檗碱



黄连碱

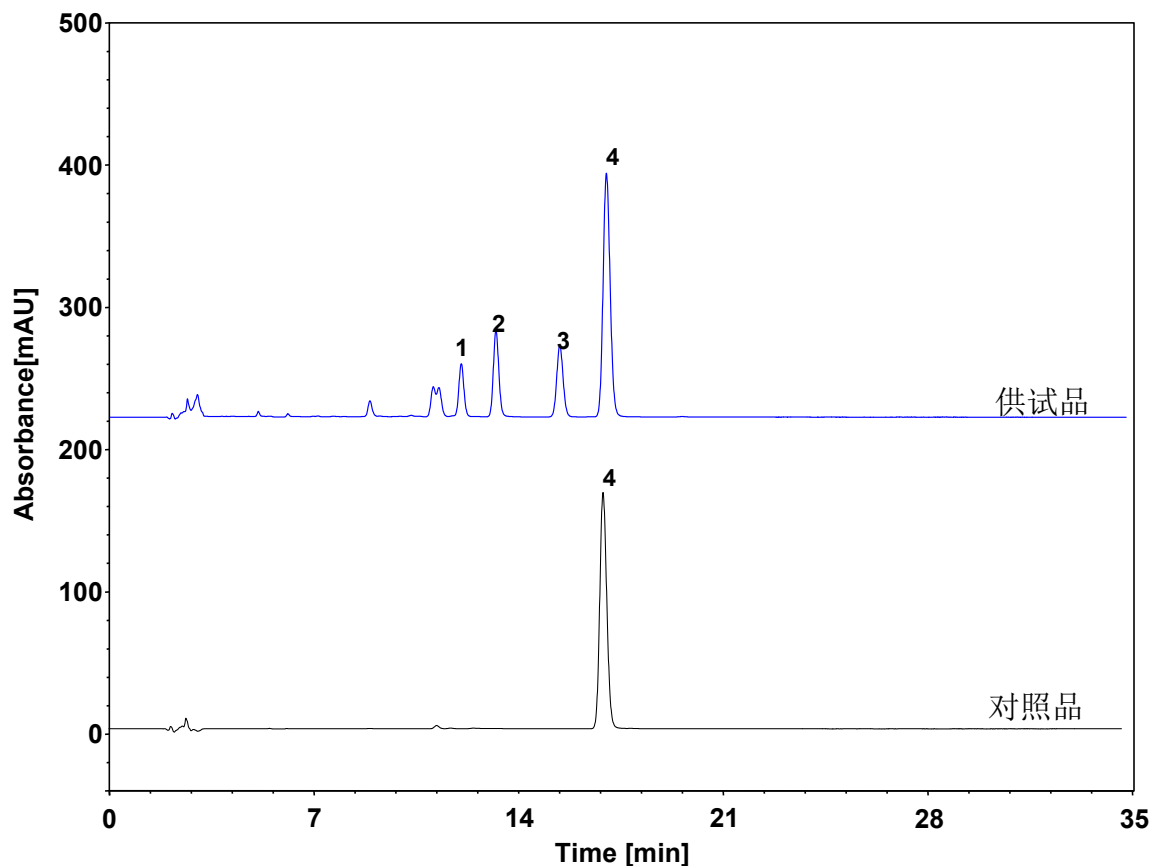


巴马汀



小檗碱

黄连配方颗粒-含量测定

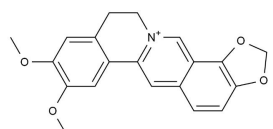


Column: ChromCore 120 C18, 5 μm
 Dimension: 4.6 \times 250 mm
 Mobile Phase: 50/50 v/v 乙腈/0.05 mol/L 磷酸二氢钾溶液 (每100 mL中加十二烷基硫酸钠0.4 g), pH4.0

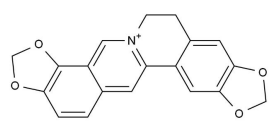
Flow Rate: 1.0 mL/min
 Temperature: 30 $^{\circ}\text{C}$
 Injection: 10 μL
 Detection: UV 345 nm
 Sample: 黄连配方颗粒
 Peaks:

1. 表小檗碱
2. 黄连碱
3. 巴马汀
4. 小檗碱

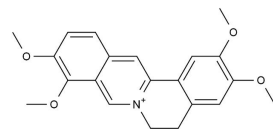
| 供试品 | 保留时间 (min) | 理论塔板数 | 拖尾因子 | 分离度 | 相对保留时间 |
|------|------------|-------|------|------|--------|
| 表小檗碱 | 12.083 | 23418 | 1.09 | / | 0.71 |
| 黄连碱 | 13.283 | 23937 | 1.08 | 3.64 | 0.78 |
| 巴马汀 | 15.475 | 23434 | 1.08 | 5.86 | 0.91 |
| 小檗碱 | 17.083 | 23772 | 1.12 | 3.80 | 1.00 |



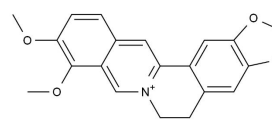
表小檗碱



黄连碱



巴马汀



小檗碱