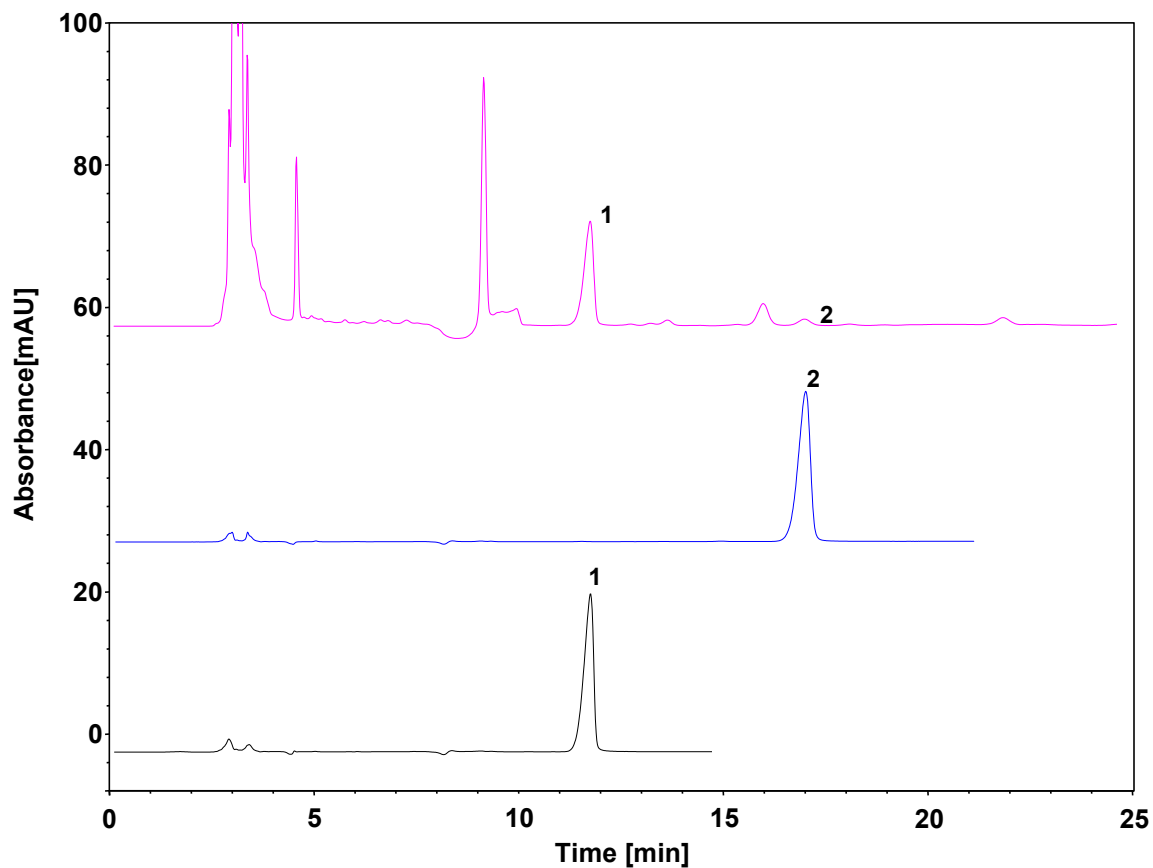
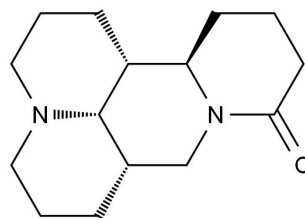


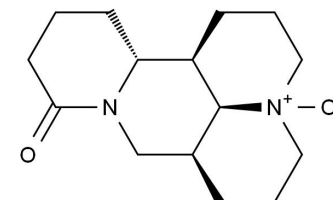
克痒舒洗液



Column: ChromCore NH₂, 5 μm
Dimension: 4.6 × 250 mm
Mobile Phase: 82/10/8 v/v/v 乙腈/无水乙醇/3%磷酸水
Flow Rate: 1.0 mL/min
Temperature: 25 °C
Injection: 10 μL
Detection: UV 220 nm
Sample: 克痒舒洗液
Peaks:
1. 苦参碱
2. 氧化苦参碱



苦参碱



氧化苦参碱