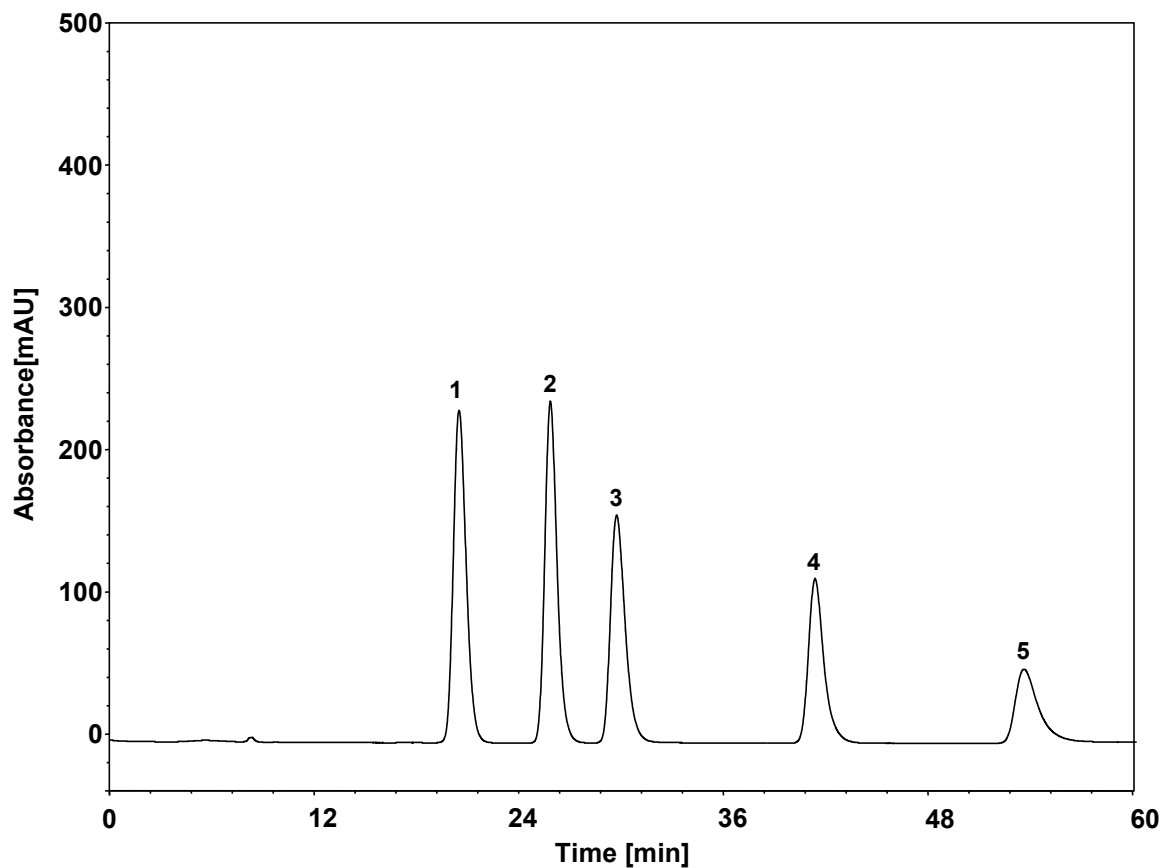
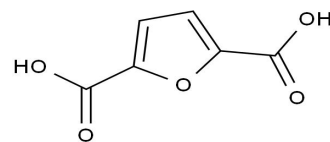


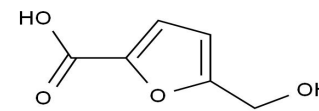
呋喃类化合物



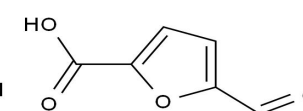
Column: ChromCore Sugar-10H, 6 μm
Dimension: 7.8 \times 300 mm
Mobile Phase: 5 mM 硫酸水溶液
Flow Rate: 0.5 mL/min
Temperature: 30 $^{\circ}\text{C}$
Injection: 10 μL
Detection: UV 260 nm
Sample: 呋喃类化合物
Peaks: 1. FDCA
2. HMFCA
3. FFCA
4. HMF
5. DFF



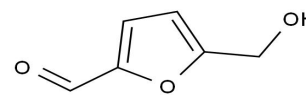
FDCA



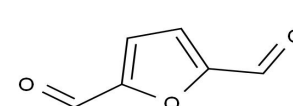
HMFCA



FFCA



HMF



DFF