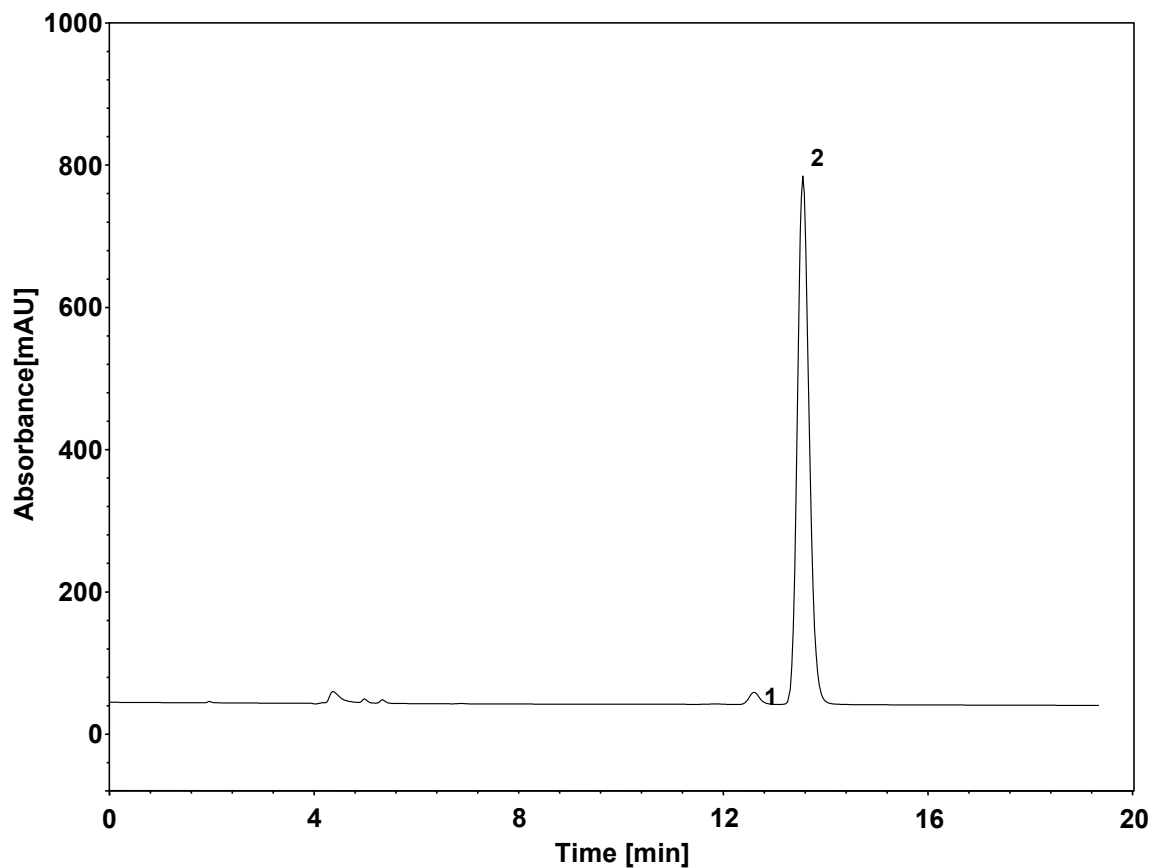
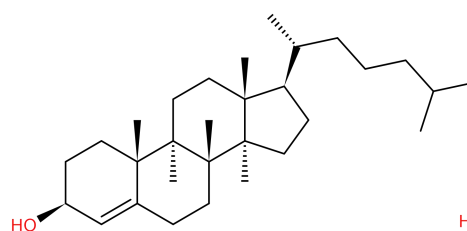


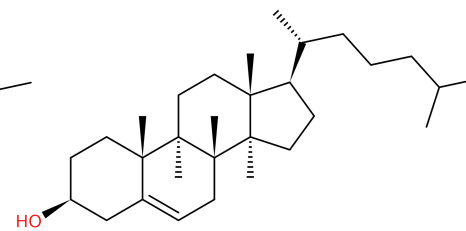
中间体



Column: ChromCore C30, 5 μ m
Dimension: 4.6 \times 250 mm
Mobile Phase: 甲醇
Flow Rate: 0.8 mL/min
Temperature: 30 $^{\circ}$ C
Injection: 10 μ L
Detection: UV 207 nm
Sample: 中间体与杂质E (中间体 2 mg/mL 杂质E 0.02 mg/mL 甲醇溶解)
Peaks: 1. 杂质E
2. 中间体



杂质E



17- (1, 5-Dimethyl-hexyl)-10, 13-dimethyl-2, 3, 4, 7, 8, 9, 10, 11, 12, 13, 14, 15, 16, 17-tetradecahydro-1H-cyclope