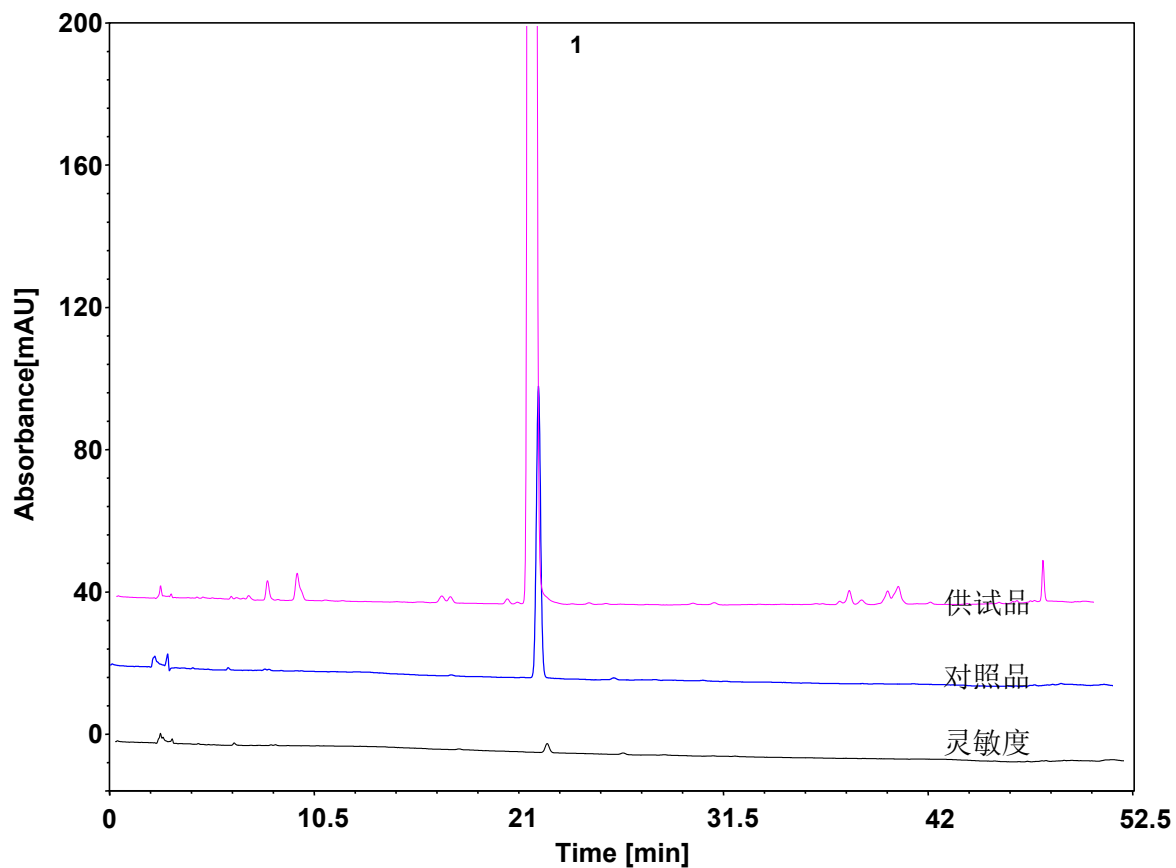


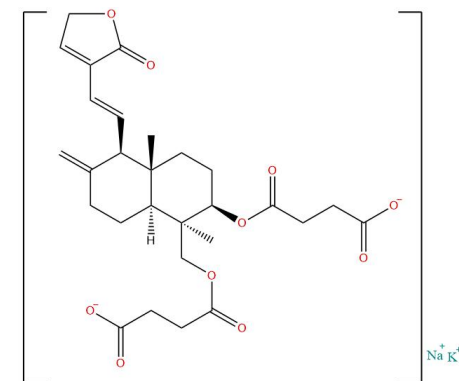
炎琥宁



Column: ChromCore Polar C18, 5 μ m
Dimension: 4.6 \times 250 mm
Mobile Phase: A) 0.1% 磷酸二氢钾溶液, pH2.5
B) 乙腈

Gradient:	t (min)	%A	%B
	0	65	35
	10	65	35
	40	50	50
	52	23	77
	53	65	35
	62	65	35

Flow Rate: 1.0 mL/min
Temperature: 35 $^{\circ}$ C
Injection: 50 μ L
Detection: UV 251 nm
Samples: 灵敏度溶液 (0.25 μ g/mL)
对照溶液 (5 μ g/mL)
供试品溶液 (0.5 mg/mL)
Peak: 1. 炎琥宁



炎琥宁