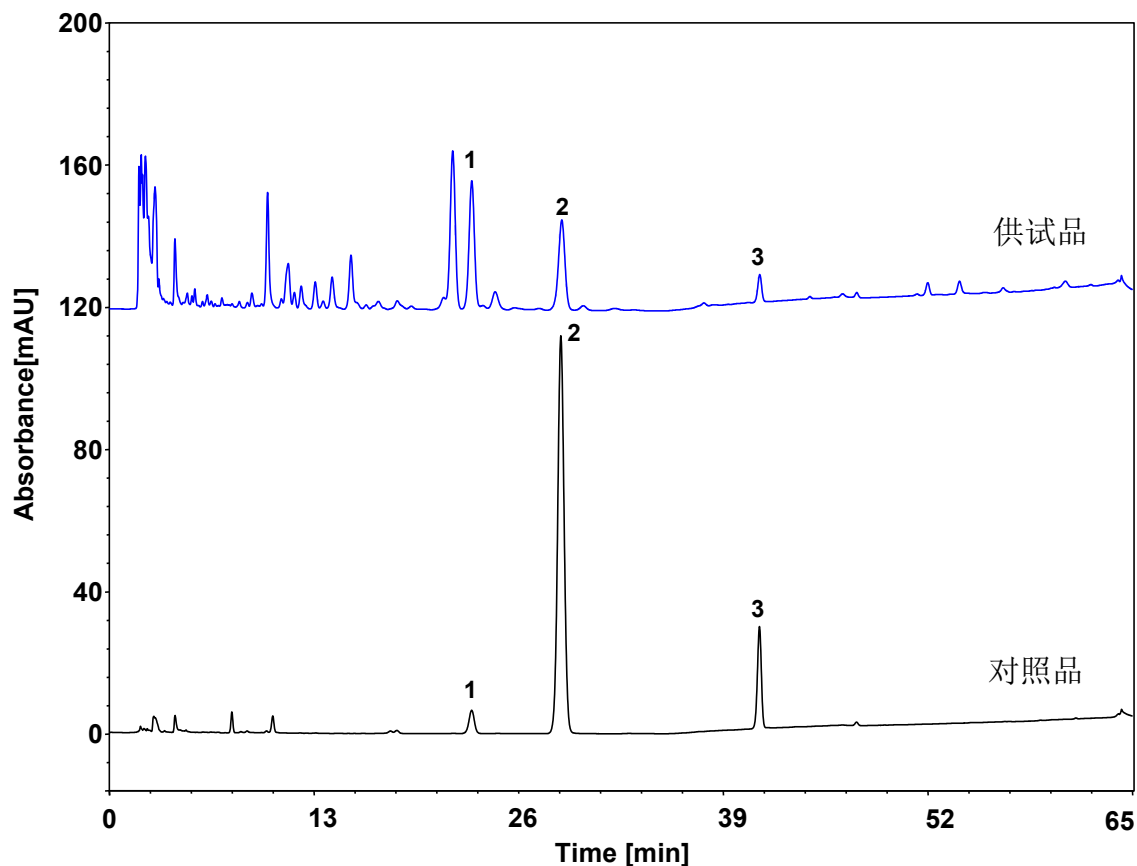


# 苍术药材



Column: ChromCore Polar C18, 5  $\mu$ m

Dimension: 4.6  $\times$  250 mm

Mobile Phase: A) 0.2% 磷酸水

B) 乙腈

Gradient:	t (min)	%A	%B
	0	42	58
	32	42	58
	35	35	65
	55	15	85
	60	5	95
	65	42	58

Flow Rate: 1.0 mL/min

Temperature: 25  $^{\circ}$ C

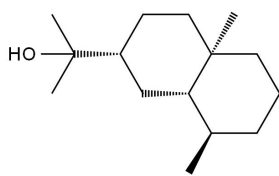
Injection: 10  $\mu$ L

Detection: UV 208 nm

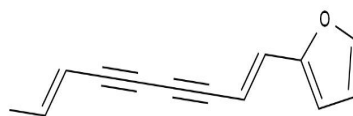
Samples: 对照溶液 ( $\beta$ -桉叶醇 0.03 mg/mL、苍术素 0.04 mg/mL、苍术酮 0.05 mg/mL)

供试品溶液 (30 mg/mL, 甲醇超声处理)

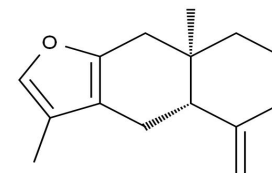
Peaks:  
1.  $\beta$ -桉叶醇  
2. 苍术素  
3. 苍术酮



$\beta$ -桉叶醇



苍术素



苍术酮