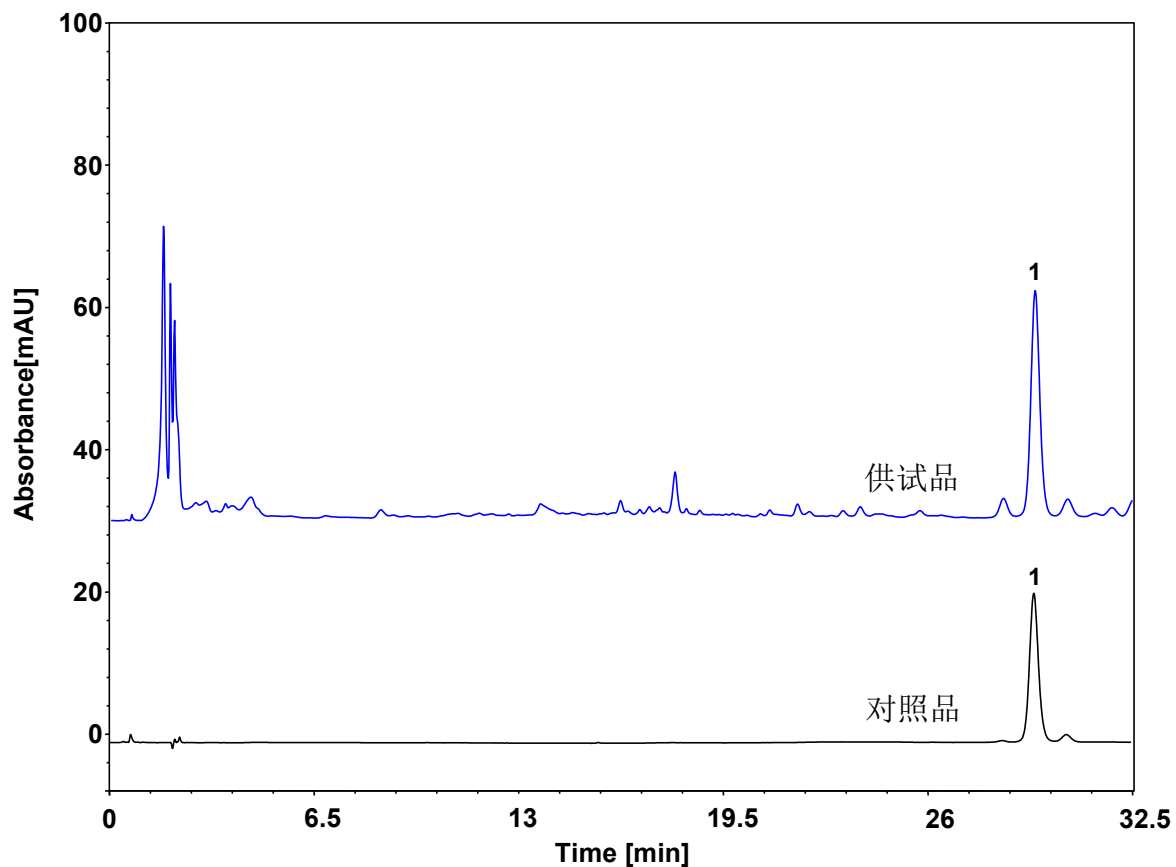


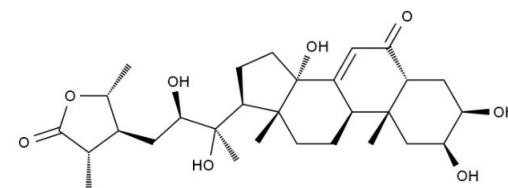
# 川牛膝 (中国药典)



Column: ChromCore AR C18, 3  $\mu$ m  
Dimension: 4.6  $\times$  150 mm  
Mobile Phase: A) 水  
B) 甲醇  
Gradient:

t (min)	%A	%B
0	90	10
5	90	10
15	63	37
30	63	37
31	0	100
41	0	100

Flow Rate: 1.0 mL/min  
Temperature: 30  $^{\circ}$ C  
Injection: 10  $\mu$ L  
Detection: UV 243 nm  
Sample: 川牛膝  
Peak: 1. 杯苋甾酮



杯苋甾酮

供试品溶液	保留时间 (min)	理论塔板数	拖尾因子	分离度
杯苋甾酮	29.408	51313	1.07	2.0