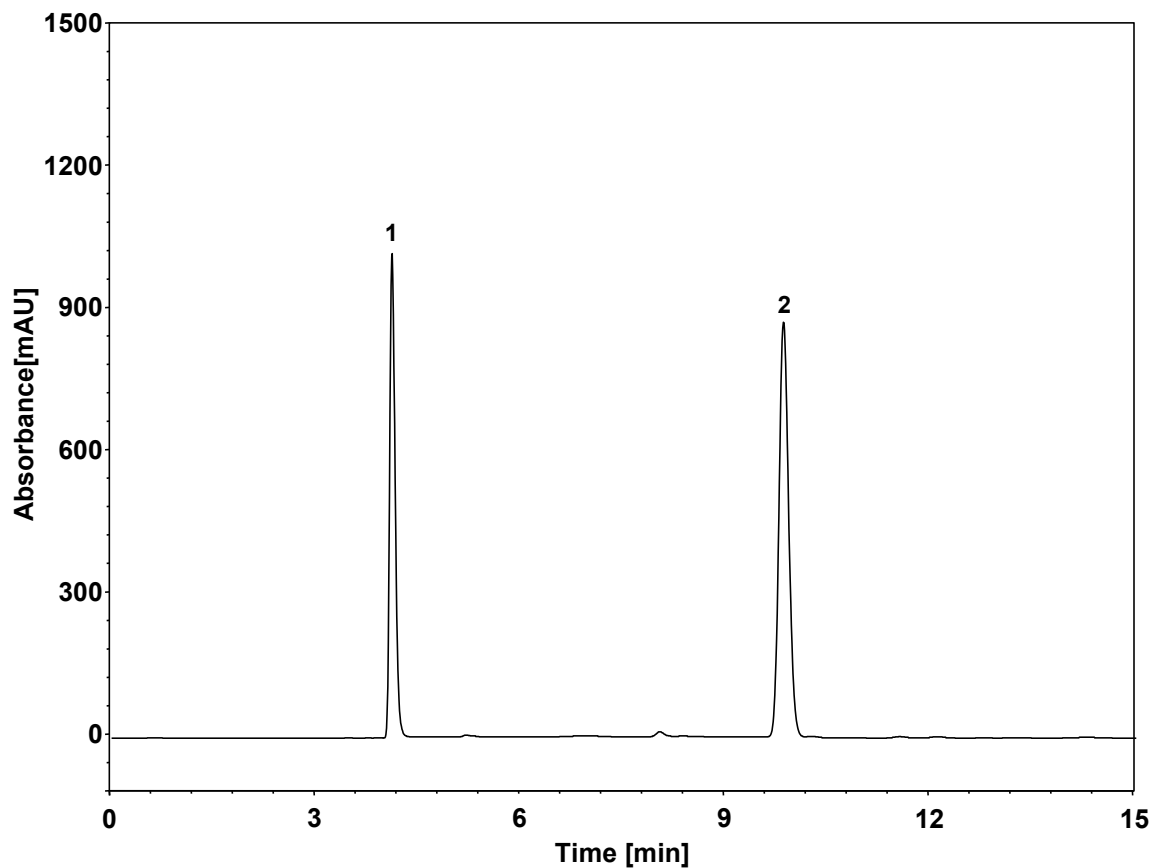
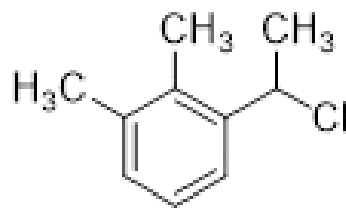


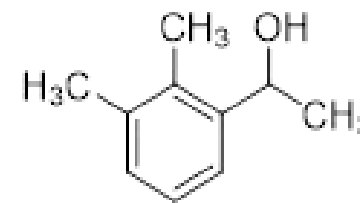
1- (1-氯乙基)-2, 3-二甲基苯



Column: ChromCore 120 C18, 5 μm
Dimension: 4.6 \times 250 mm
Mobile Phase: 70/30 v/v 乙腈/水
Flow Rate: 1.0 mL/min
Temperature: 30 $^{\circ}\text{C}$
Injection: 5 μL
Detection: UV 220 nm
Sample: 1- (1-氯乙基)-2, 3-二甲基苯系统溶液 (0.5 mg/mL, 乙腈溶解)
Peaks:
1. 1- (2, 3-二甲基苯基)乙醇
2. 1- (1-氯乙基)-2, 3-二甲基苯



1- (1-氯乙基)-2, 3-二甲基苯



1- (2, 3-二甲基苯基)乙醇