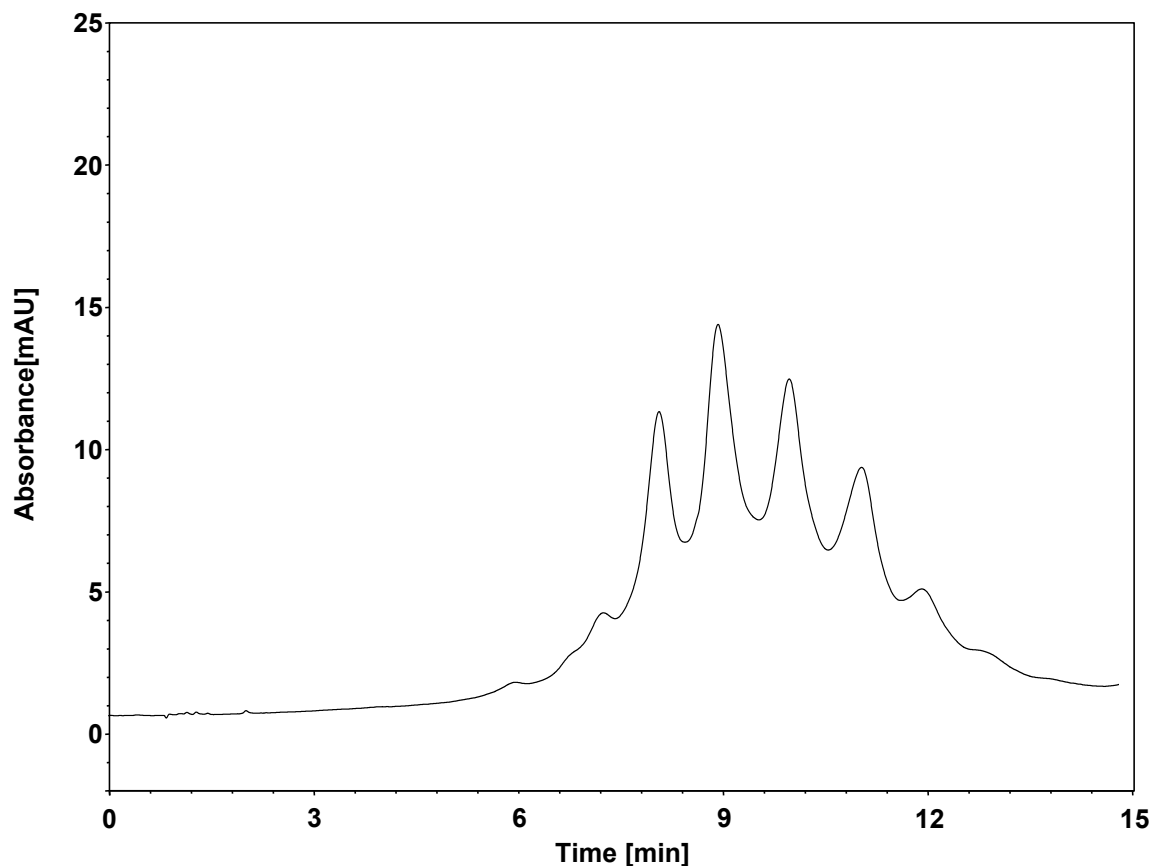


# 人生长激素-Fc融合蛋白



Column: BioCore SAX, 10  $\mu$ m  
Dimension: 4.6  $\times$  150 mm  
Mobile Phase: A) 20 mM phosphate buffer, pH6.5  
B) 300 mM NaCl in 20 mM phosphate buffer, pH6.5  
Gradient: 

| t (min) | %A | %B  |
|---------|----|-----|
| 0       | 80 | 20  |
| 20      | 50 | 50  |
| 20.1    | 0  | 100 |
| 25      | 0  | 100 |
| 25.1    | 80 | 20  |
| 35      | 80 | 20  |

  
Flow Rate: 1.0 mL/min  
Temperature: 30  $^{\circ}$ C  
Injection: 5  $\mu$ L  
Detection: UV 220 nm  
Sample: 人生长激素-Fc融合蛋白 (8 mg/mL)