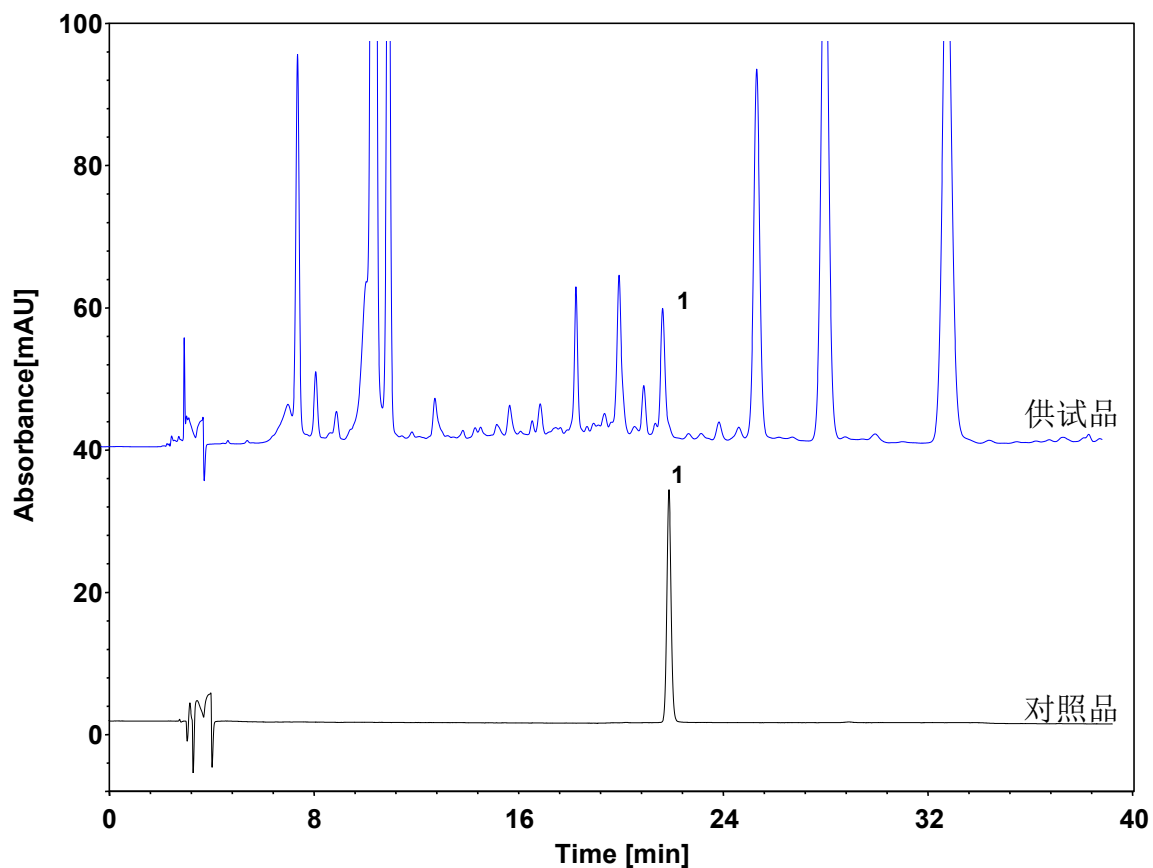


金银花配方颗粒



Column: ChromCore Phenyl, 5 μ m

Dimension: 4.6 \times 250 mm

Mobile Phase: A) 乙腈
B) 0.3%磷酸溶液

Gradient:	t (min)	%A	%B
	0	10	90
	15	20	80
	30	20	80
	40	30	70

Flow Rate: 1.0 mL/min

Temperature: 25 $^{\circ}$ C

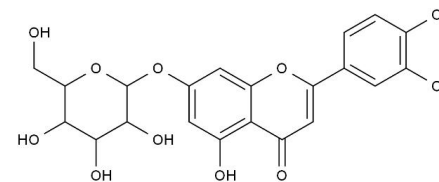
Injection: 10 μ L

Detection: UV 350 nm

Sample: 金银花配方颗粒

Peak: 1. 木犀草苷

	保留时间 (min)	理论 塔板数	拖尾 因子	分离度
对照品	22.317	85255	1.06	/
供试品	22.442	86206	1.16	/



木犀草苷