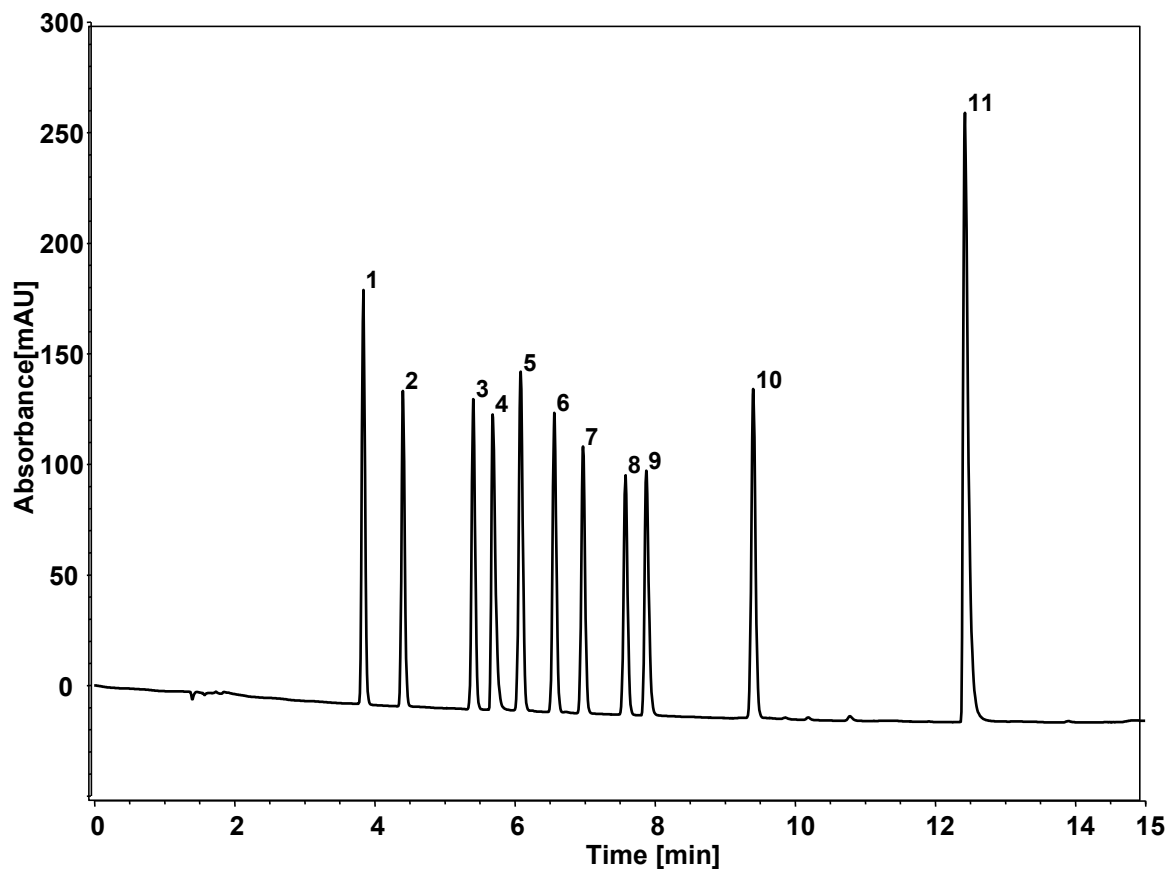


苯酚类化合物 (U. S. EPA 604)



Column: ChromCore 120 C18, 3 μ m

Dimension: 4.6 \times 150 mm

Mobile Phase: A) 乙腈

B) 0.1%磷酸水溶液

Gradient:

t (min)	%A	%B
-5	30	70
0	30	70
15	90	10

Flow Rate: 1.0 mL/min

Temperature: 40 $^{\circ}$ C

Injection: 5 μ L

Detection: UV 214 nm

Peaks:

1. Phenol (苯酚)
2. 4-Nitrophenol (4-硝基苯酚)
3. 2-Chlorophenol (2-氯苯酚)
4. 2-Nitrophenol (2-硝基苯酚)
5. 2, 4-Dimethylphenol (2, 4-二甲基苯酚)
6. 2, 4-Dinitrophenol (2, 4-二硝基苯酚)
7. 4-Chloro-3-methylphenol (4-氯-3-甲基苯酚)
8. 2, 4-Dichlorophenol (2, 4-二氯苯酚)
9. 2-Methyl-4, 6-dichlorophenol (2-甲基-4, 6-二氯苯酚)
10. 2, 4, 6-Trichlorophenol (2, 4, 6-三氯酚)
11. Pentachlorophenol (五氯酚)