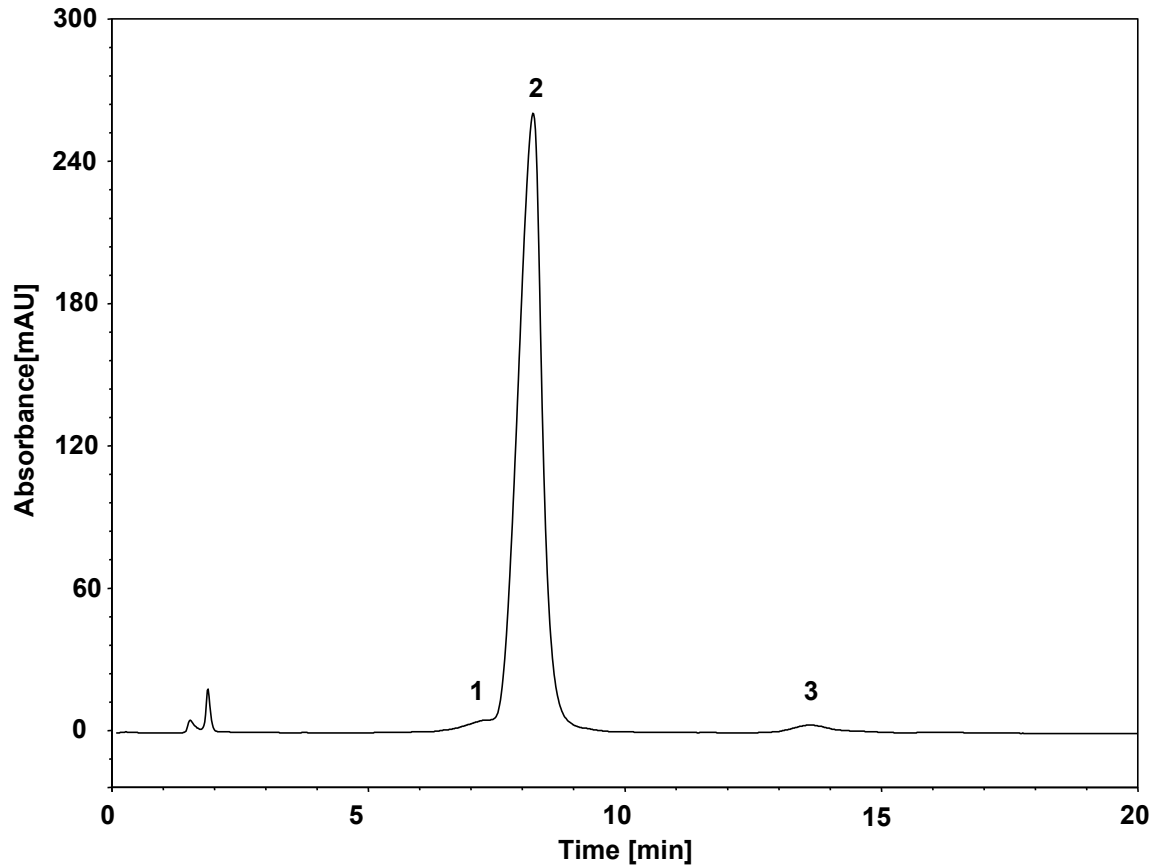


重组白介素11 (WCX)



Column: BioCore WCX, 10 μ m
Dimension: 4.6 \times 250 mm
Mobile Phase: A) 20 mM MES, pH6.5
B) 300 mM NaCl in 20 mM MES, pH6.5
Gradient:

t (min)	%A	%B
0	80	20
1	80	20
20	20	80
20.1	0	100
25	0	100
25.1	80	20
40	80	20

Flow Rate: 1.0 mL/min
Temperature: 30 $^{\circ}$ C
Injection: 5 μ L
Detection: UV 280 nm
Sample: 重组白介素11