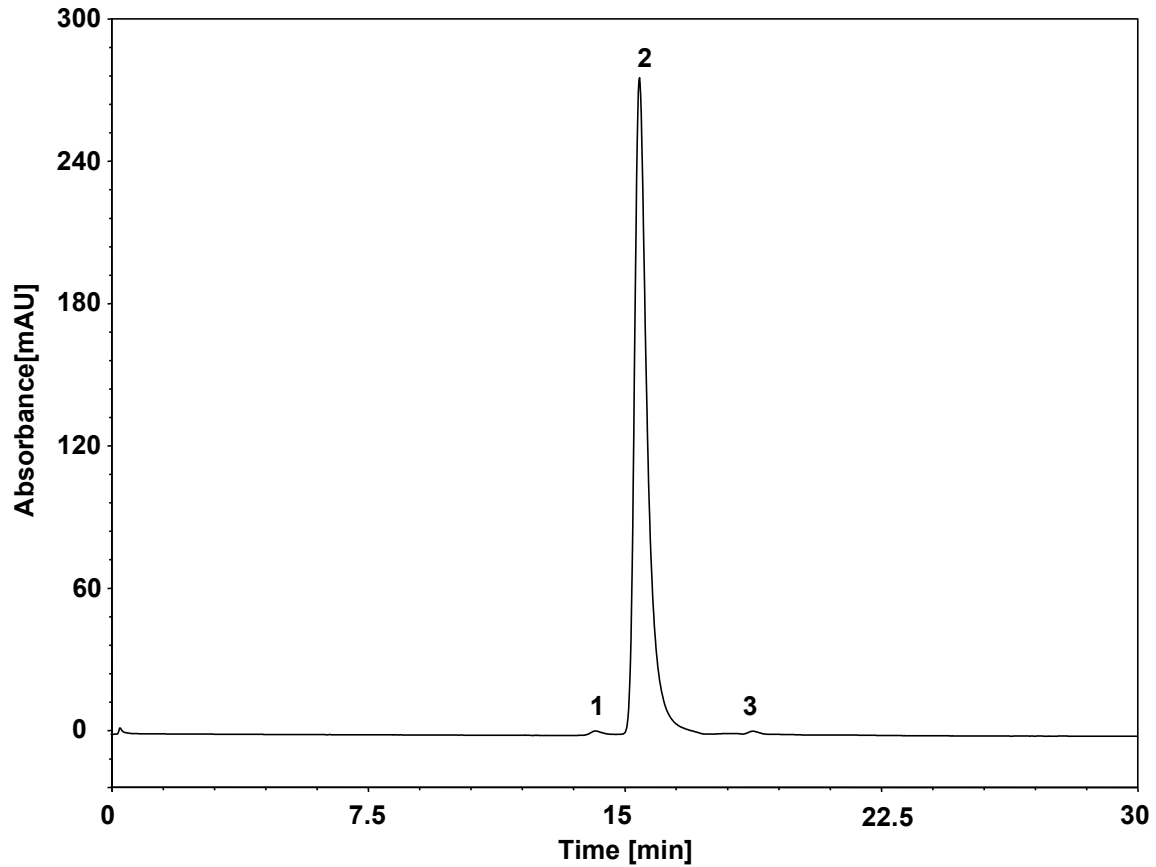


重组白介素11 (SEC)



Column: BioCore SEC-150, 5 μ m
Dimension: 4.6 \times 300 mm
Mobile Phase: 100 mM NaCl in 100 mM phosphate buffer, pH7.0
Flow Rate: 0.2 mL/min
Temperature: 30 $^{\circ}$ C
Injection: 3 μ L
Detection: UV 280 nm
Sample: 重组白介素11
Peaks:
1. 杂质
2. 重组白介素11
3. 杂质