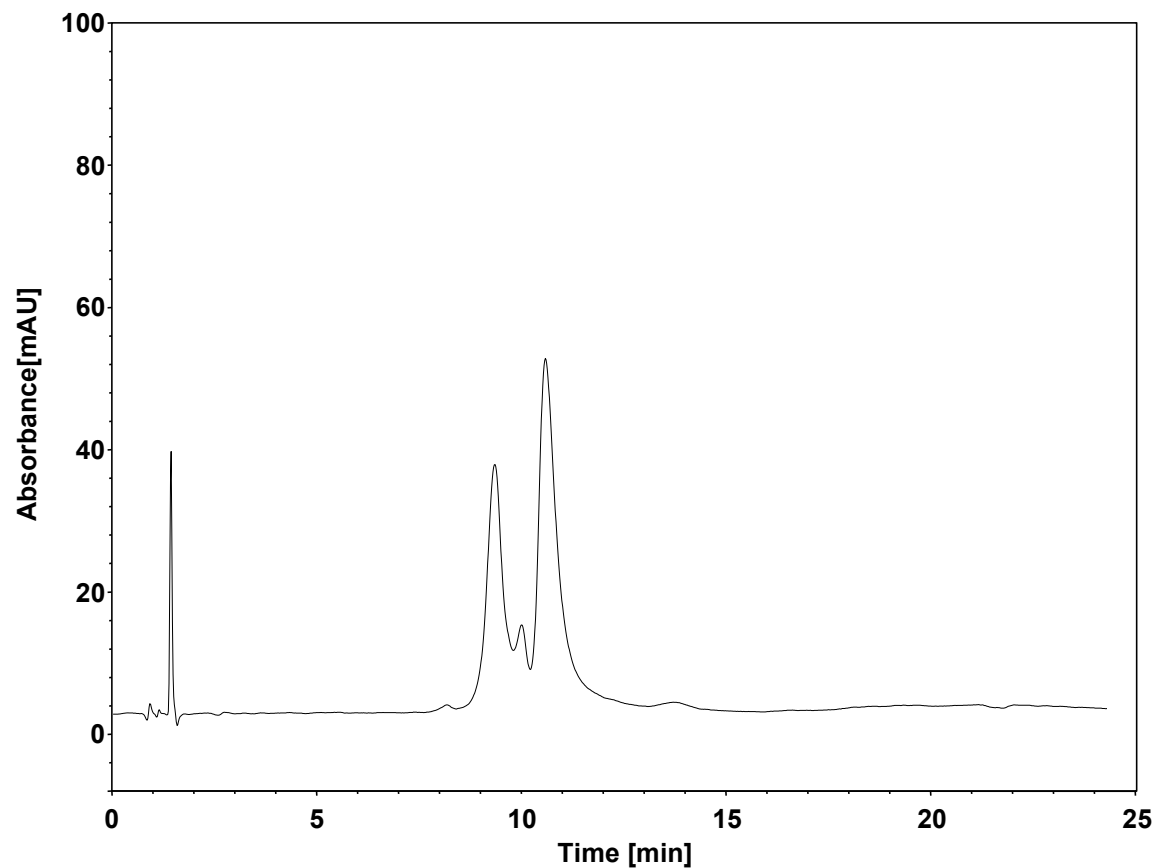


双抗-疏水作用



Column: BioCore HIC-Butyl, 5 μ m
Dimension: 4.6 \times 100 mm
Mobile Phase: A) 2.0 M $(\text{NH}_4)_2\text{SO}_4$ in 100 mM phosphate buffer, pH7.0
B) 100 mM phosphate buffer, pH7.0
C) Isopropanol

Gradient:	t(min)	%A	%B	%C
	0	60	40	0
	20	0	80	20
	25	0	80	20

Flow Rate: 1.0 mL/min
Temperature: 30 $^\circ$ C
Injection: 10 μ L
Detection: UV 214 nm
Sample: 双抗