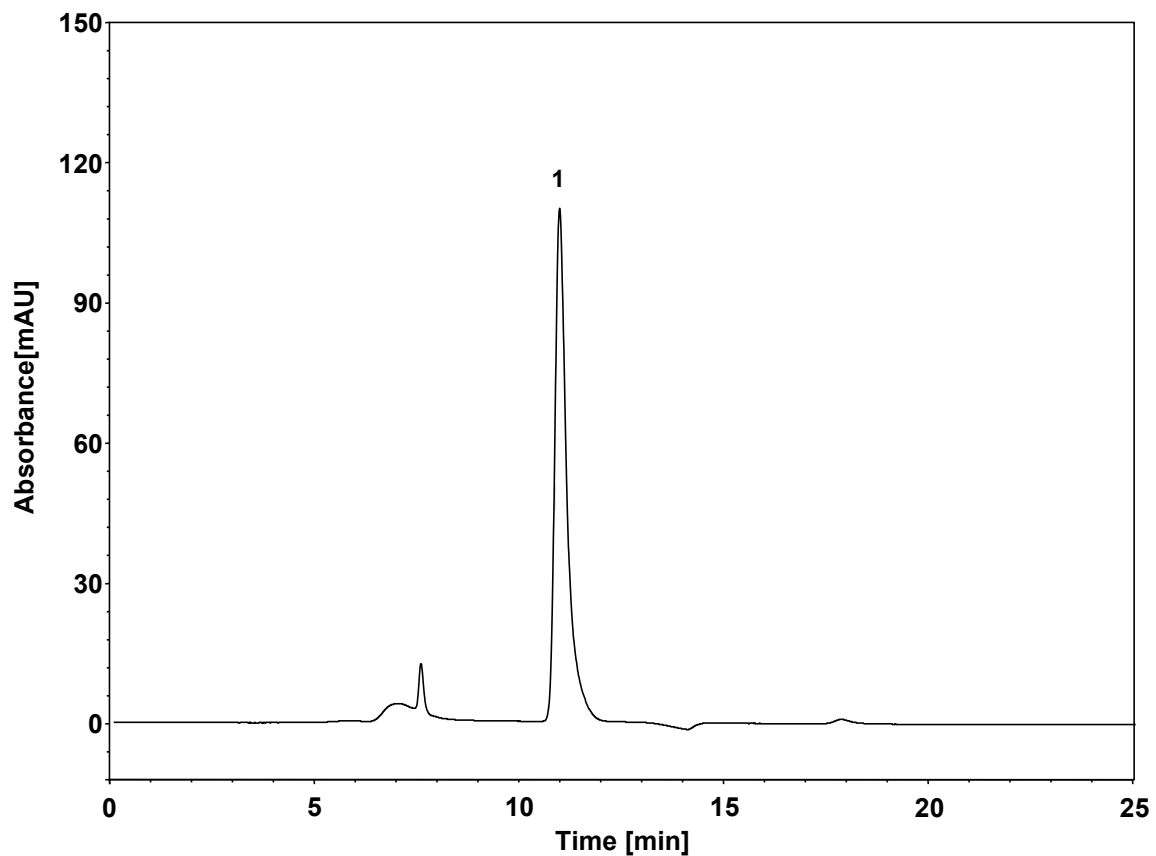


乳酸锂



Column: ChromCore Sugar-10H, 8 μm
Dimension: 7.8 \times 300 mm
Mobile Phase: 15/85 v/v 乙腈/2.5 mM硫酸水溶液
Flow Rate: 0.6 mL/min
Temperature: 40 $^{\circ}\text{C}$
Injection: 50 μL
Detection: UV 208 nm
Sample: 乳酸锂 (0.7 mg/mL水配制)
Peak: 1. 乳酸

	保留时间 (min)	理论塔板数 (USP)	拖尾因子 (USP)	分离度 (USP)
乳酸	10.911	7787	1.689	/

