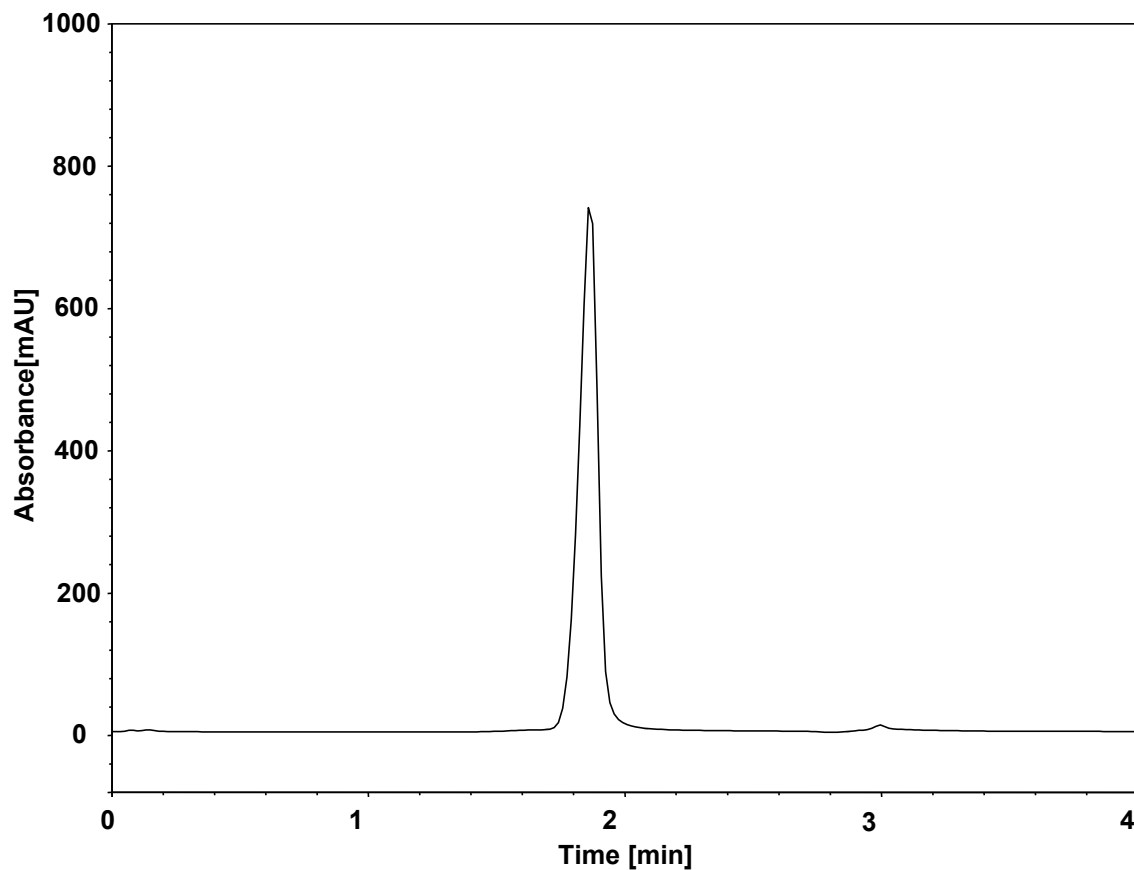


融合蛋白-效价分析



Column: BioCore Protein A, 15 μ m
Dimension: 2.1 \times 50 mm
Mobile Phase: A) 150 mM NaCl in 50 mM phosphate buffer, pH7.0
B) 150 mM NaCl in 50 mM phosphate buffer, pH2.5
Gradient:

t (min)	%A	%B
0	100	0
1	100	0
1.01	0	100
2.2	0	100
2.21	100	0
4	100	0

Flow Rate: 2.0 mL/min
Temperature: 25 $^{\circ}$ C
Injection: 20 μ L
Detection: UV 280 nm
Sample: 融合蛋白