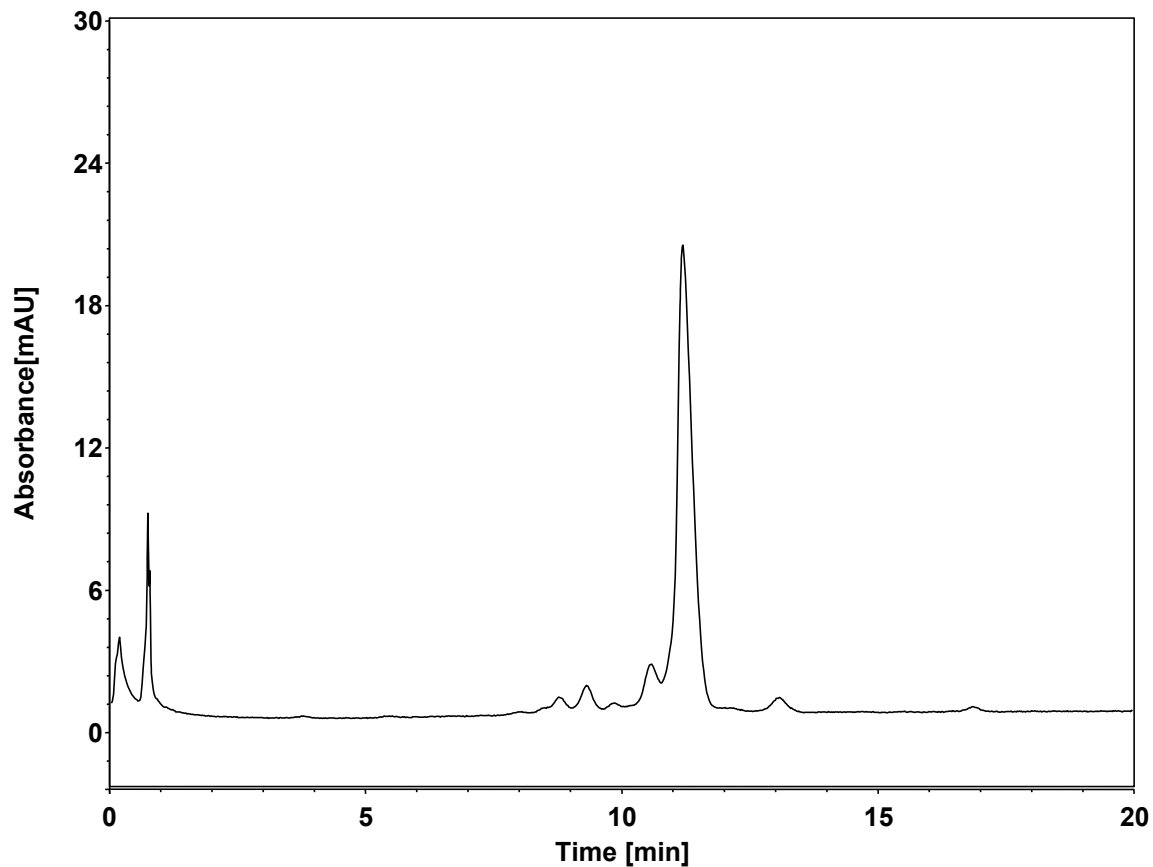


# 融合蛋白-离子交换 (SCX)



Column: BioCore SCX, 10  $\mu$ m  
Dimension: 4.6  $\times$  150 mm  
Mobile Phase: A) 20 mM MES, pH6.0  
B) 300 mM NaCl in 20 mM MES, pH6.0

Gradient:

t (min)	%A	%B
-15	72	28
0	72	28
25	45	55
25.1	0	100
28	0	100

Flow Rate: 1.0 mL/min  
Temperature: 30  $^{\circ}$ C  
Injection: 10  $\mu$ L  
Detection: UV 280 nm  
Sample: 融合蛋白 (2.5 mg/mL in Mobile Phase A)