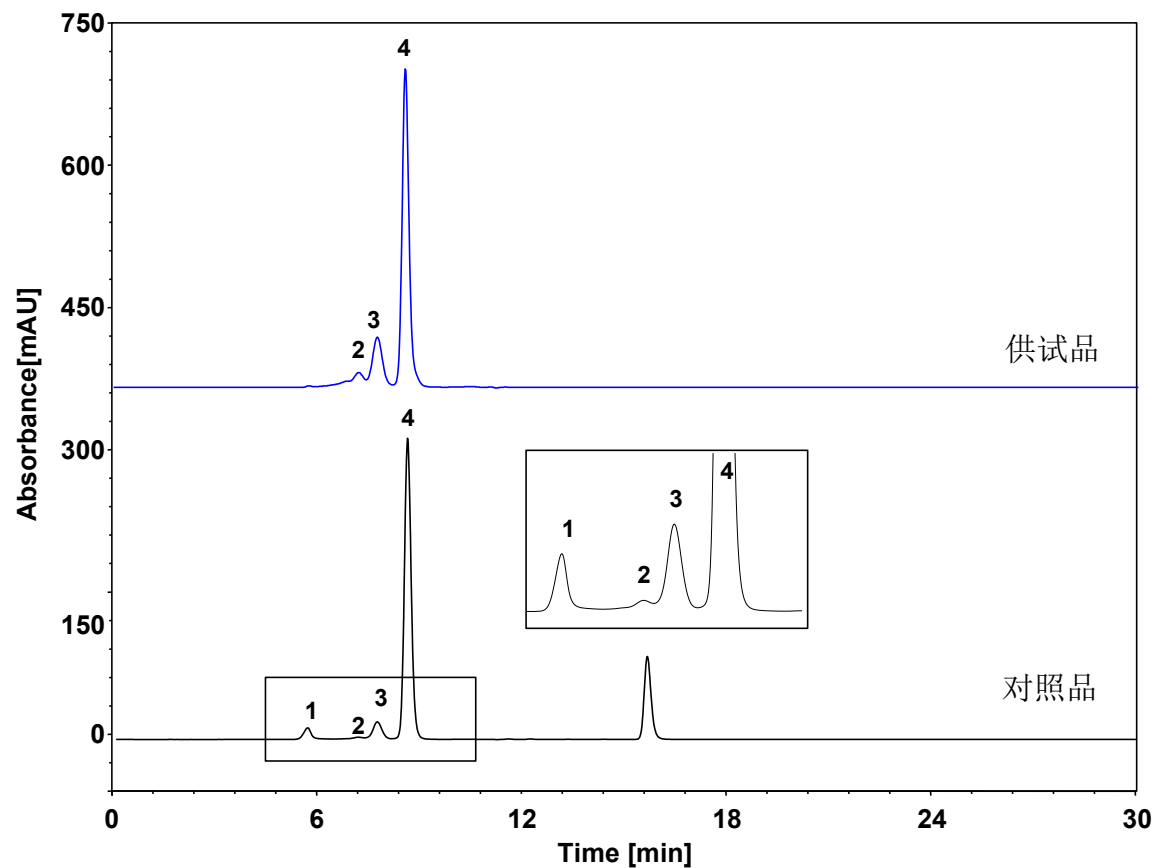


人血白蛋白-体积排阻



Column: BioCore SEC-300, 5 μm
Dimension: 7.8 \times 300 mm
Mobile Phase: 0.1 mol/L K_2HPO_4 solution, pH7.0
Flow Rate: 0.7 mL/min
Temperature: 25 $^\circ\text{C}$
Injection: 10 μL
Detection: UV 280 nm
Sample: 人血白蛋白
Peaks:
1. 多聚体
2. 低聚物
3. 二聚体
4. 单体