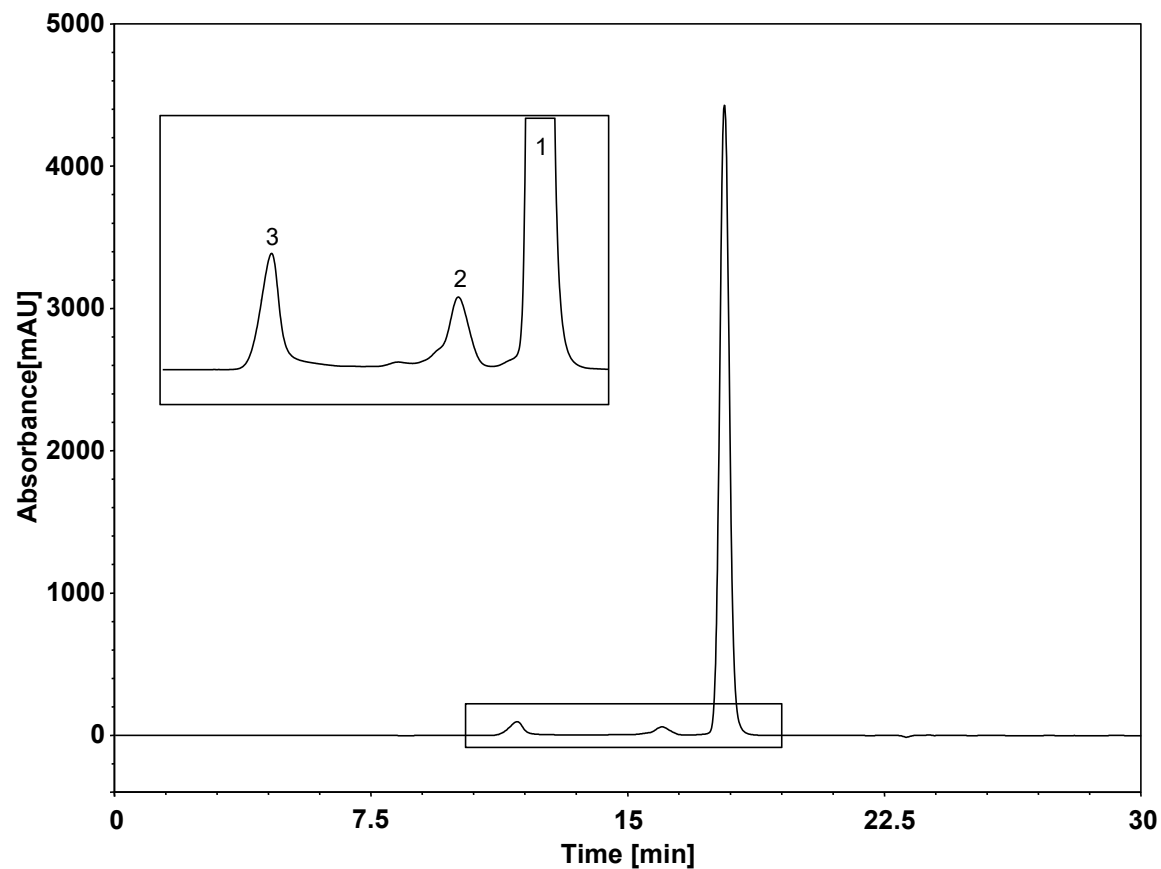


人血白蛋白-多聚体-串联



Column: BioCore SEC-300, 5 μ m
Dimension: 7.8 \times 300 mm + 7.8 \times 300 mm 串联
Mobile Phase: 150 mM phosphate buffer, pH6.8
Flow Rate: 1.0 mL/min
Temperature: 30 $^{\circ}$ C
Injection: 10 μ L
Detection: UV 210 nm
Sample: 人血白蛋白水溶液
Peaks:
1. 人血白蛋白
2. 人血白蛋白二聚体
3. 人血白蛋白多聚体