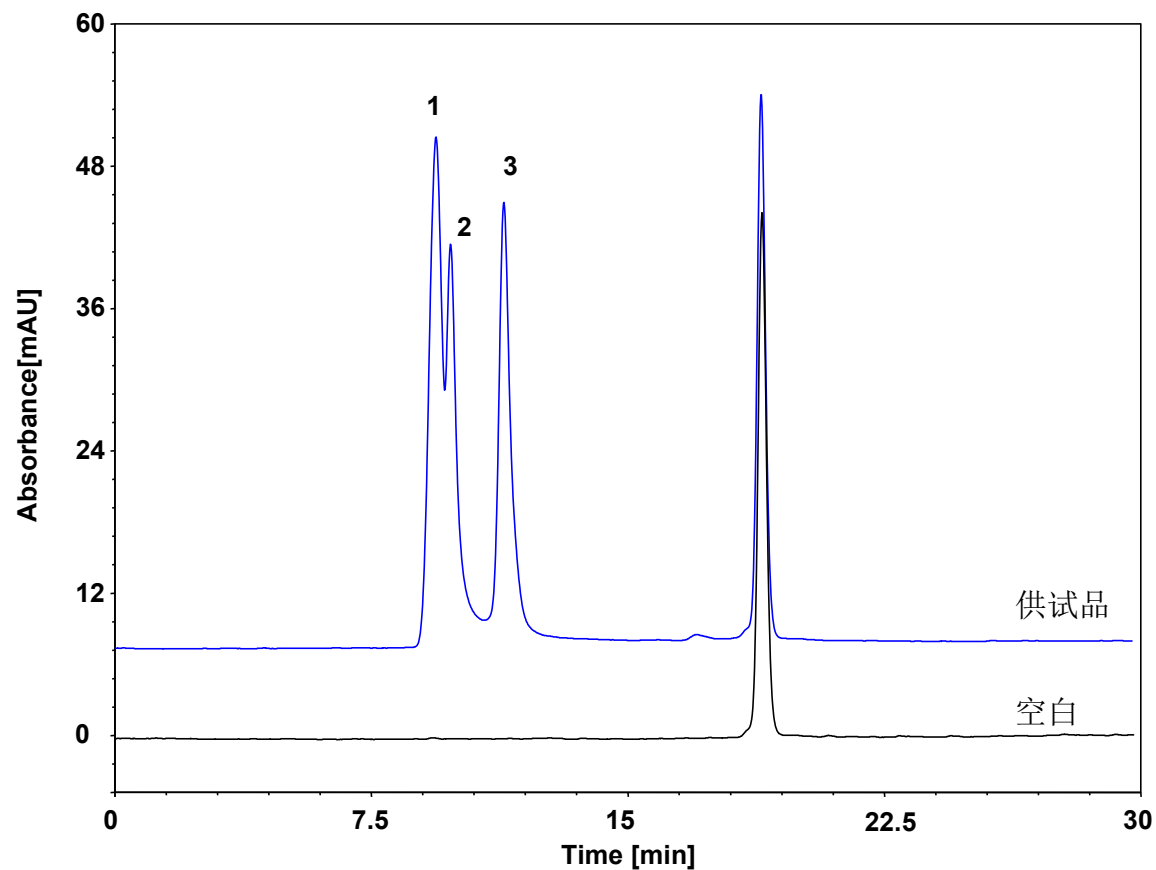


# 牛一型胶原蛋白-体积排阻



Column: BioCore SEC-1000, 5  $\mu$ m  
Dimension: 7.8  $\times$  300 mm  
Mobile Phase: 100 mM NaCl in 100 mM phosphate buffer, pH7.0  
Flow Rate: 0.6 mL/min  
Temperature: 25  $^{\circ}$ C  
Injection: 2  $\mu$ L  
Detection: UV 220 nm  
Sample: 牛一型胶原蛋白