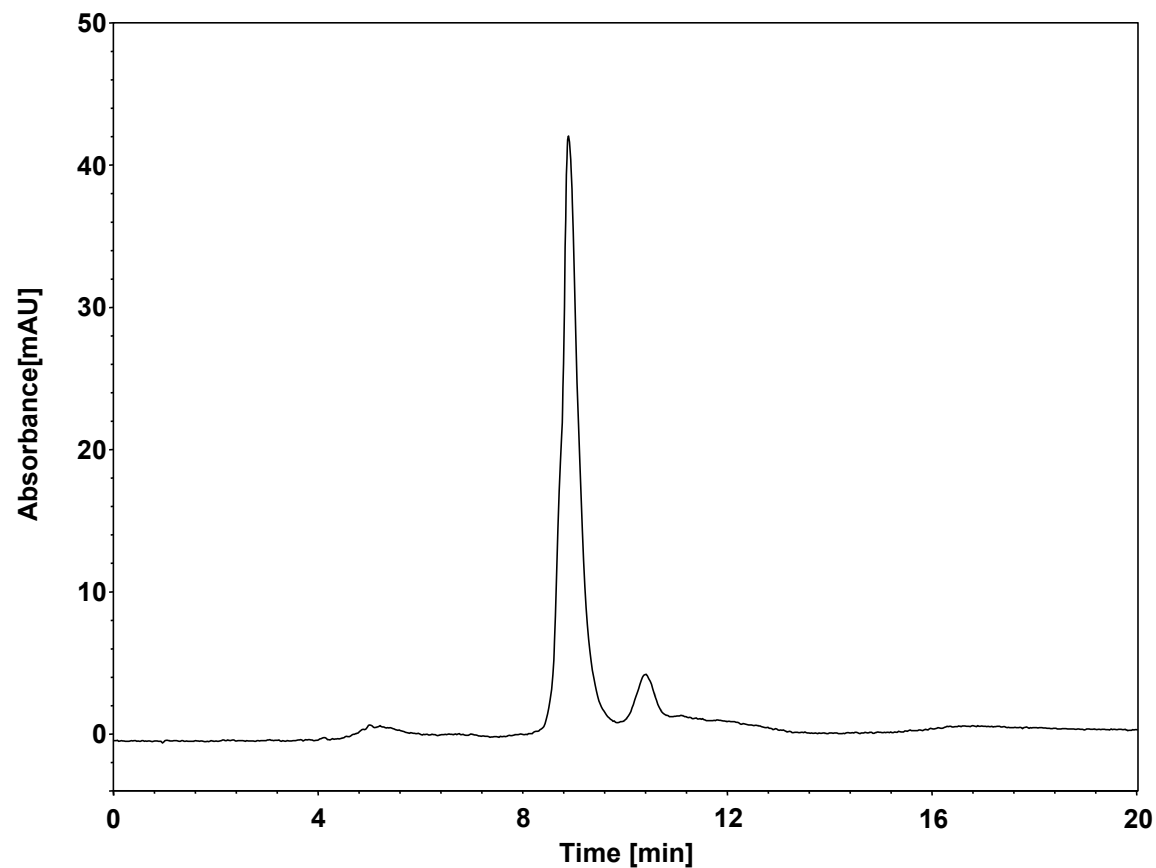


牛血清白蛋白电荷异质体



Column: BioCore SAX, 10 μ m
Dimension: 4.6 \times 150 mm
Mobile Phase: A) 20 mM Tris, pH8.5
B) 500 mM NaCl in 20 mM Tris, pH8.5
Gradient:

t(min)	%A	%B
-15	100	0
0	100	0
15	0	100
15.1	0	100
20	0	100

Flow Rate: 1.0 mL/min
Injection: 10 μ L
Temperature: 30 $^{\circ}$ C
Detection: UV 280 nm
Sample: BSA (5.0 mg/mL in H₂O)