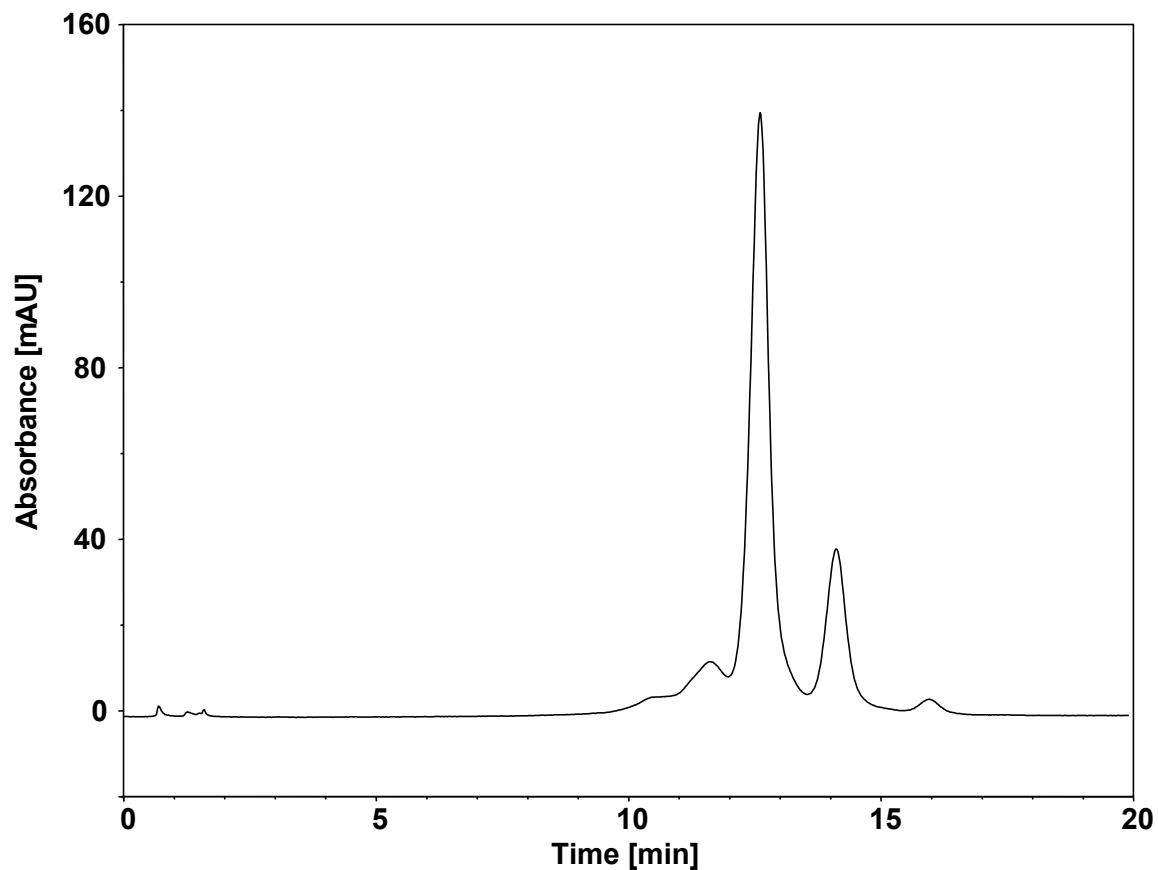


# 利妥昔-电荷异质体



Column: BioCore WCX, 10  $\mu$ m  
Dimension: 4.6  $\times$  150 mm  
Mobile Phase: A) 20 mM MES, pH6.5  
B) 300 mM NaCl in 20 mM MES, pH6.5  
Gradient: 

t (min)	%A	%B
-15	78	22
0	78	22
0.1	78	22
20	63	37
20.1	0	100
23	0	100

  
Flow Rate: 0.6 mL/min  
Temperature: 30  $^{\circ}$ C  
Injection: 10  $\mu$ L  
Detection: UV 280 nm  
Sample: Rituximab biosimilar injection solution (5 mg/mL in water)