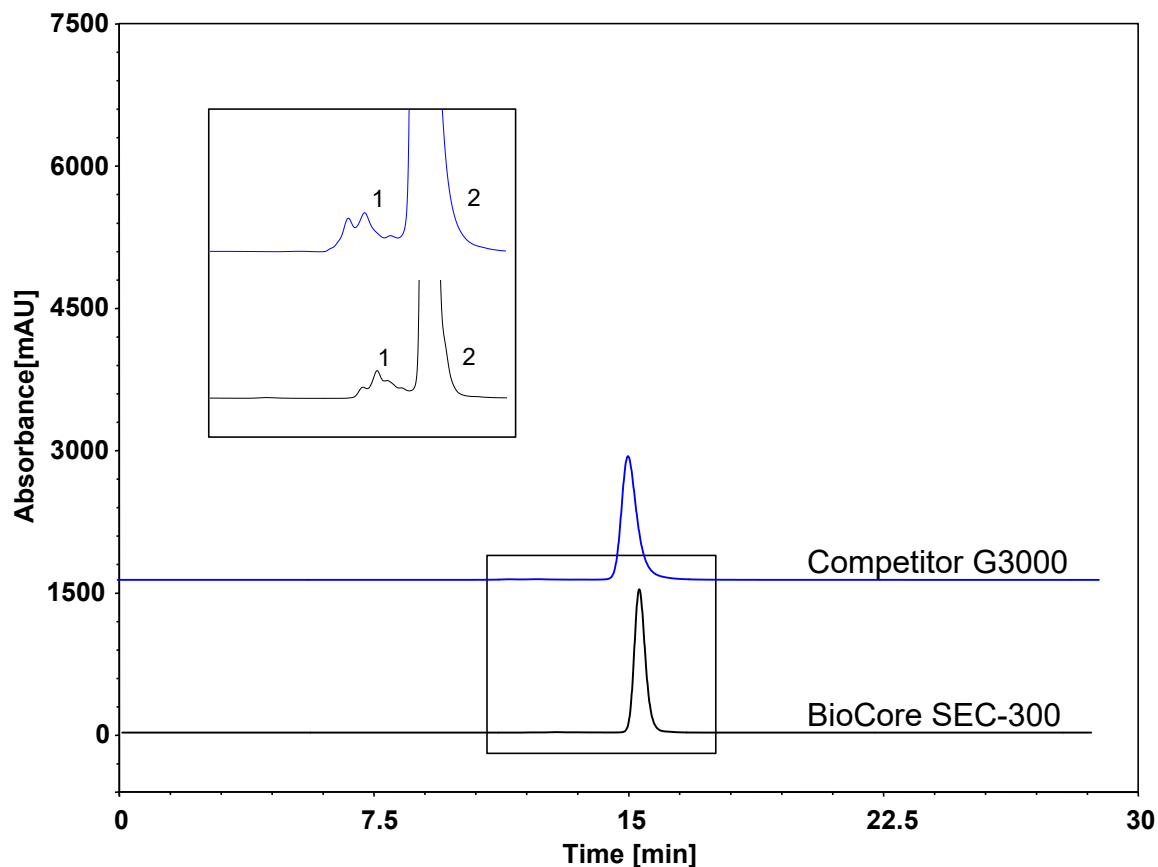


IgG4-多聚体-对比图谱 (SEC-300/Competitor G3000)



Column Black: BioCore SEC-300, 5 μm
Column Blue: Competitor G3000
Dimension: 7.8 \times 300 mm
Mobile Phase: phosphate buffer, pH7.4
Flow Rate: 0.5 mL/min
Temperature: -
Injection: 5 μL
Detection: UV 280 nm
Sample: Monoclonal Antibody
Peaks: 1. Monoclonal Antibody Aggregates
2. Monoclonal Antibody

色谱柱	主峰拖尾因子	峰数	主峰纯度
BioCore SEC-300	1.202	5	98.92%
Competitor G3000	1.419	4	98.30%