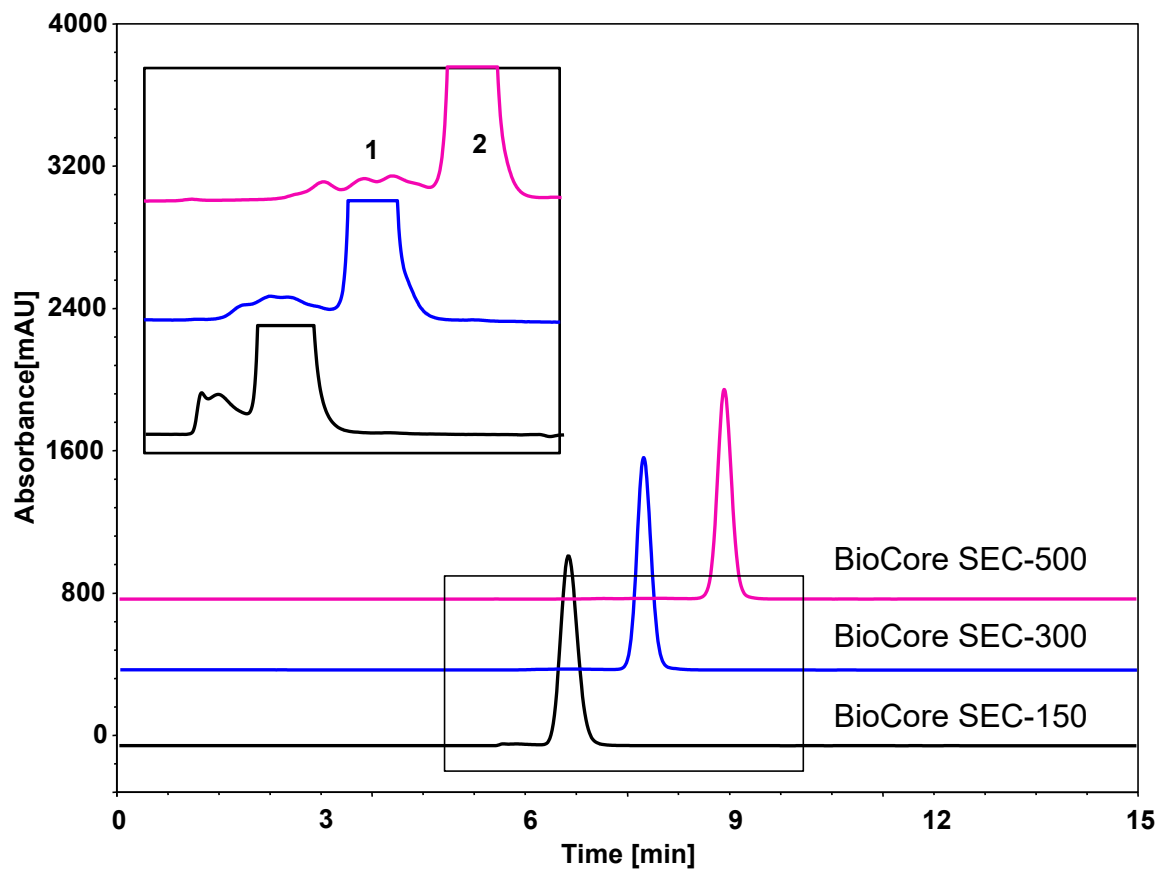


IgG4-多聚体-对比图谱 (SEC-150/SEC-300/SEC-500)



Columns: BioCore SEC-150, 5 μ m
 BioCore SEC-300, 5 μ m
 BioCore SEC-500, 5 μ m

Dimension: 4.6 \times 300 mm

Mobile Phase: 150 mM phosphate buffer, pH6.8

Flow Rate: 0.35 mL/min

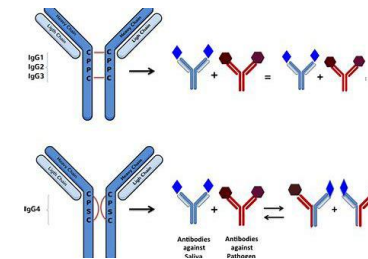
Temperature: 30 $^{\circ}$ C

Injection: 5 μ L

Detection: UV 280 nm

Sample: IgG4 (16 mg/mL in water)

Peaks:
 1. IgG4 Aggregates
 2. IgG4



型号	流出时间 (IgG4)	峰数	峰纯度 (IgG4)
SEC-150	6.631 min	3	98.48 %
SEC-300	7.731 min	5	98.48 %
SEC-500	8.922 min	6	98.50 %