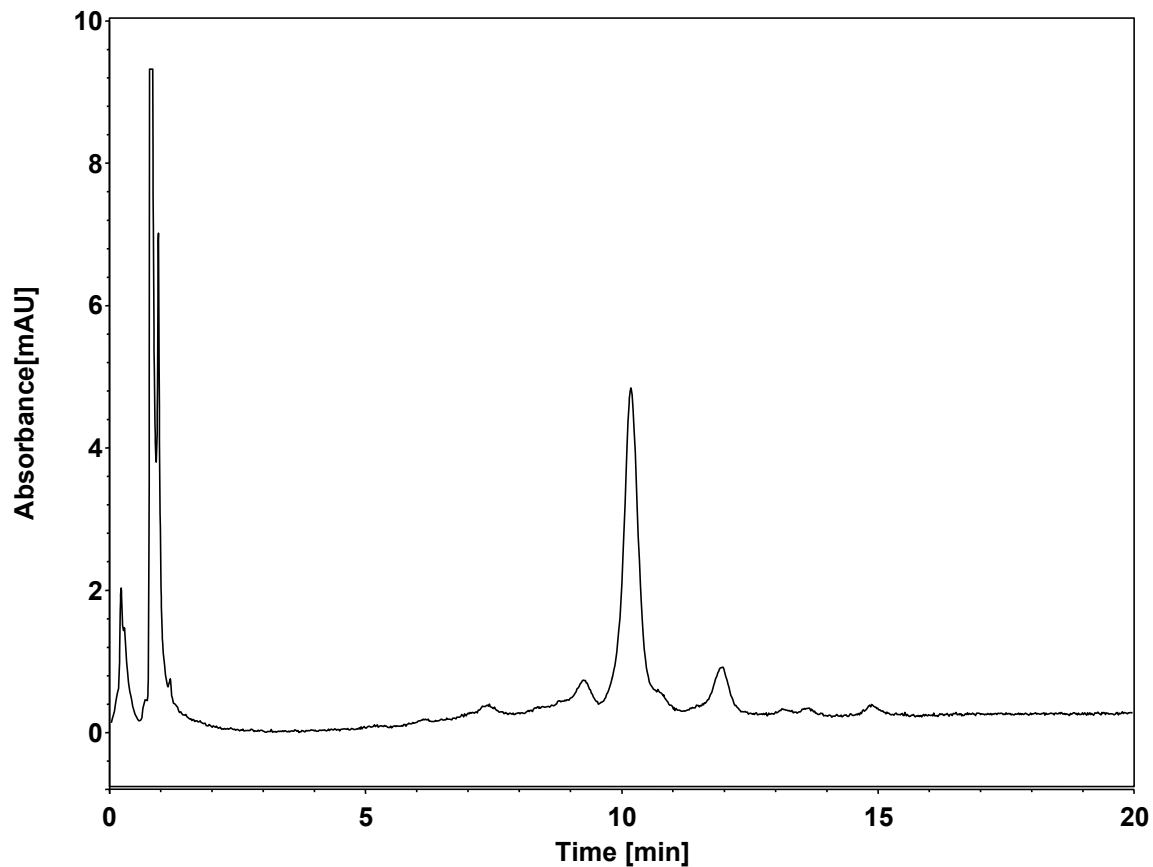


IgG2-离子交换 (SCX)



Column: BioCore SCX, 10 μ m
Dimension: 4.6 \times 150 mm
Mobile Phase: A) 20 mM MES, pH6.5
B) 300 mM NaCl in 20 mM MES, pH6.5

Gradient:	t (min)	%A	%B
	-15	82	18
	0	82	18
	20	70	30
	20.1	0	100
	23	0	100

Flow Rate: 1.0 mL/min
Temperature: 30 $^{\circ}$ C
Injection: 10 μ L
Detection: UV 280 nm
Sample: IgG2 (1.0 mg/mL in H₂O)