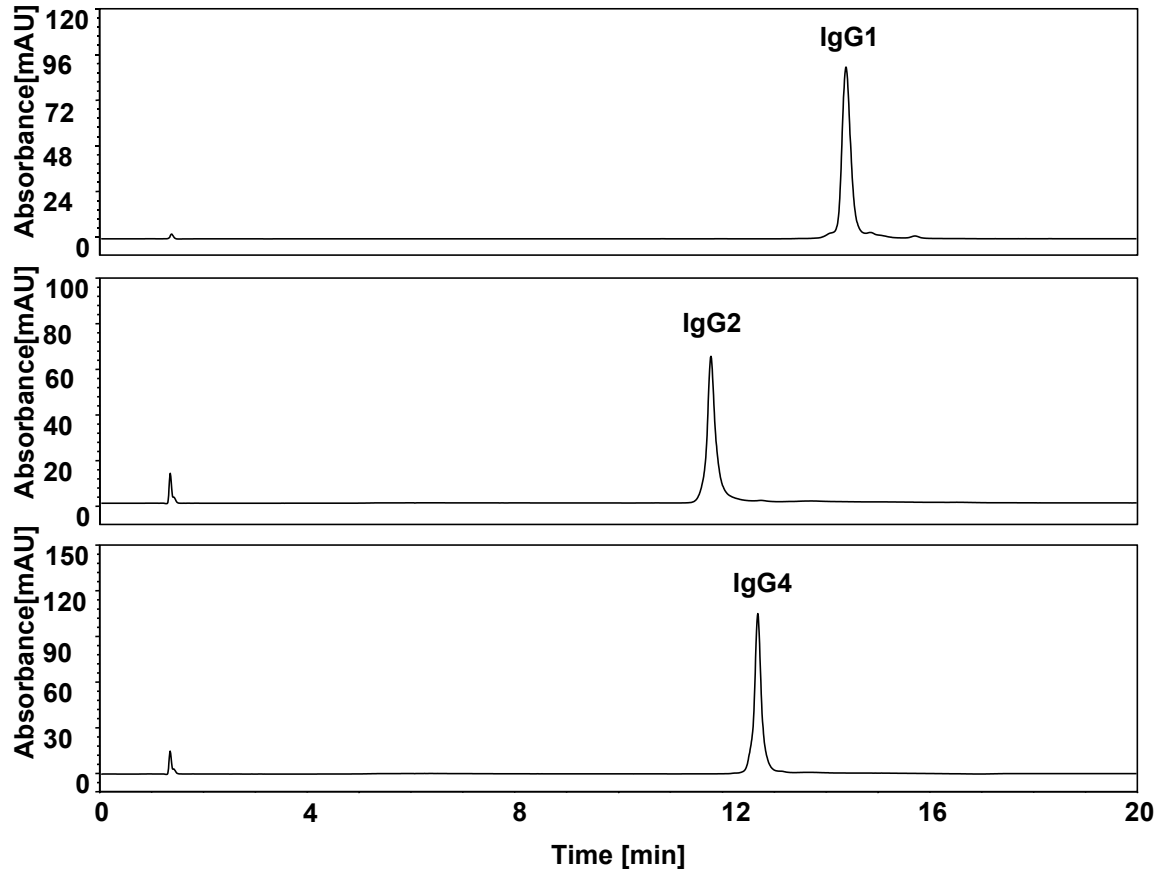


# IgG1, IgG2 和 IgG4-疏水作用



Column: BioCore HIC-Butyl, 5  $\mu$ m  
Dimension: 4.6  $\times$  100 mm  
Mobile Phase: A) 2.0 M  $(\text{NH}_4)_2\text{SO}_4$  in 100 mM phosphate buffer, pH7.0  
B) 100 mM phosphate buffer, pH7.0  
Gradient: 

t (min)	%A	%B
-10	100	0
0	100	0
1	100	0
15	0	100
20	0	100

  
Flow Rate: 1.0 mL/min  
Temperature: 30  $^\circ$ C  
Injection: 10  $\mu$ L  
Detection: UV 280 nm  
Sample: (~1 mg/mL each in Mobile Phase A)