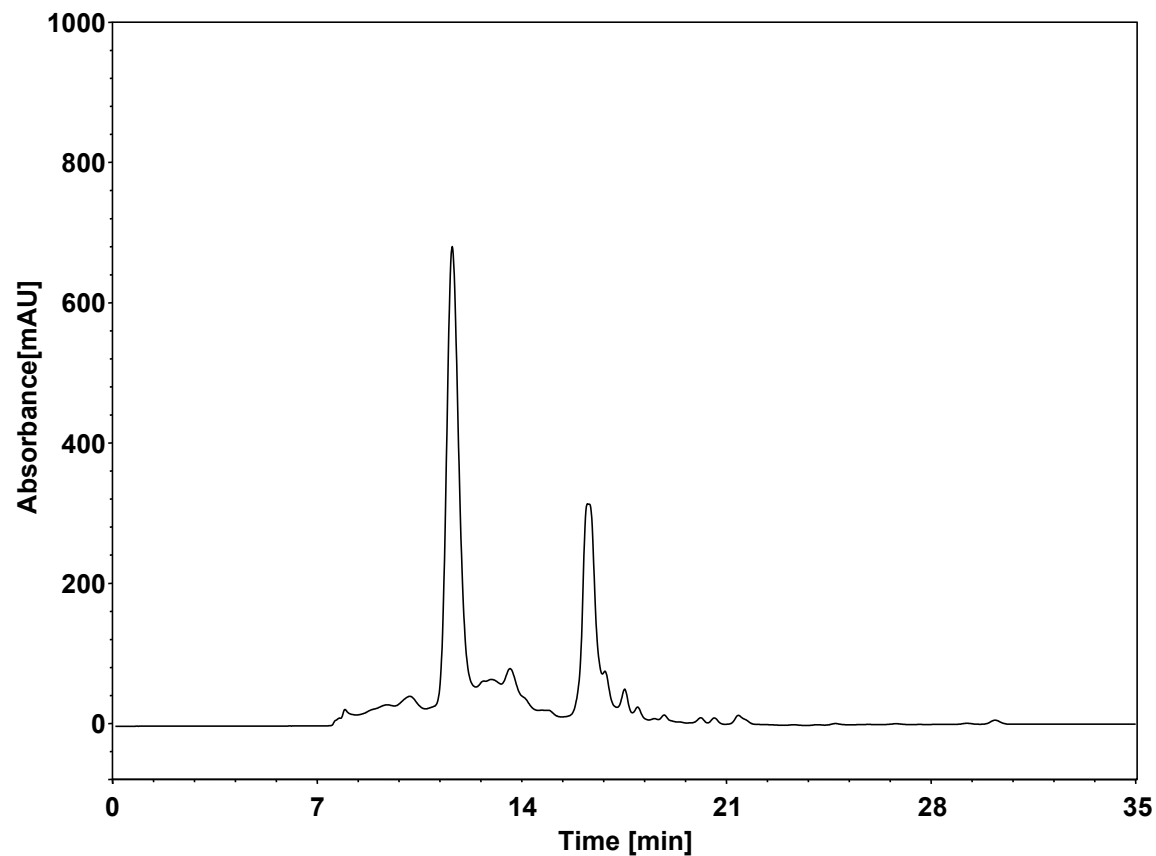


CHO细胞表达蛋白



Column: BioCore SEC-300, 5 μ m
Dimension: 7.8 \times 300 mm
Mobile Phase: 0.3 M NaCl in 50 mM phosphate buffer, pH6.8
Flow Rate: 0.7 mL/min
Temperature: 25 $^{\circ}$ C
Injection: 10 μ L
Detection: UV 215 nm
Sample: CHO细胞表达蛋白 (3 mg/mL, 三聚体蛋白 ~150KD)