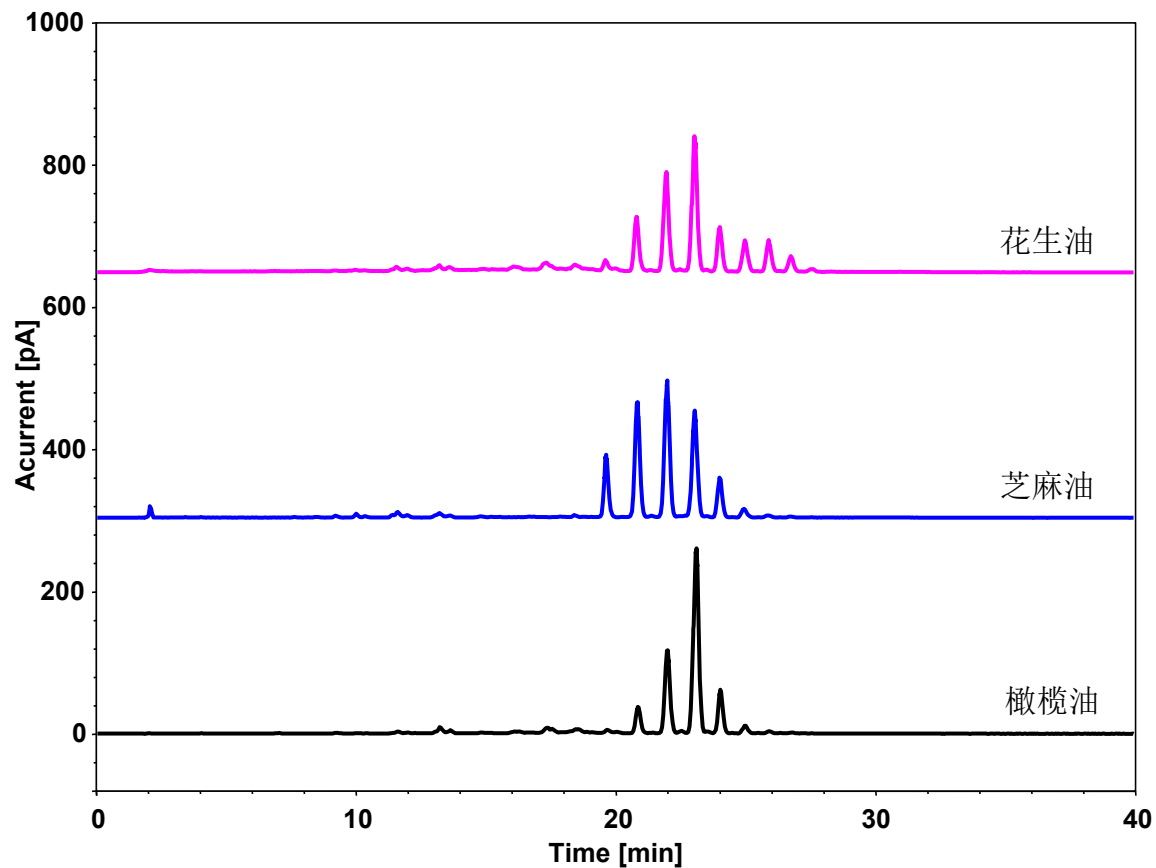


食用油



Column: ChromCore 120 C8, 5 μ m

Dimension: 4.6 \times 150 mm

Mobile Phase: A) 乙腈

B) 异丙醇

C) 0.1 M 乙酸铵, pH5.0

Gradient:	t (min)	%A	%B	%C
	-10	90	5	5
	0	90	5	5
	30	0	95	5
	40	0	95	5

Flow Rate: 1.0 mL/min

Injection: 5 μ L

Temperature: 30 $^{\circ}$ C

Detection: CAD

Sample: 食用油 (5 mg/mL溶于异丙醇)