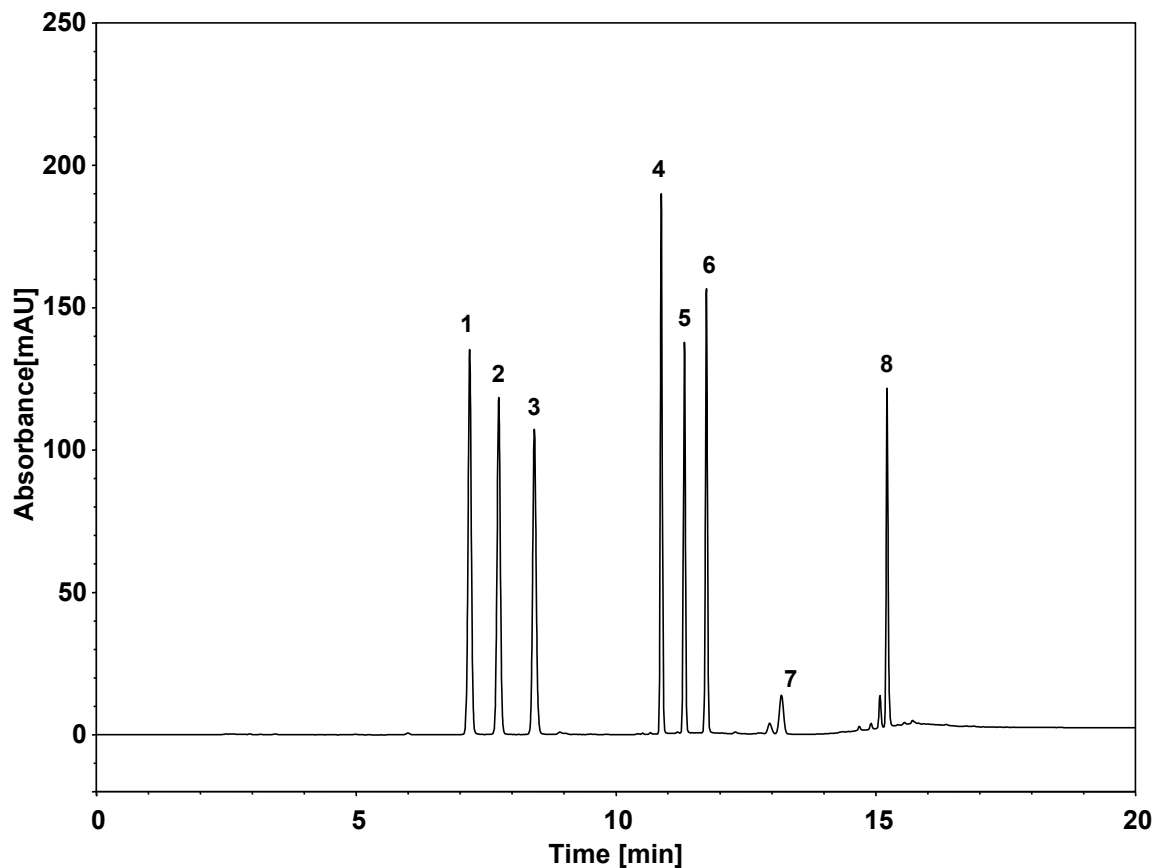


# 色素 (GB 5009.35-2016)



Column: ChromCore C18-AC, 5  $\mu$ m

Dimension: 4.6  $\times$  250 mm

Mobile Phase: A) 20 mM 乙酸铵水溶液  
B) 甲醇

Gradient:

t (min)	%A	%B
-10	95	5
0	95	5
6	80	20
8	50	50
10	50	50
12	5	95
18	5	95

Flow Rate: 1.0 mL/min

Temperature: 30  $^{\circ}$ C

Injection: 2  $\mu$ L

Detection: UV 254 nm

Peaks:

1. Lemon Yellow (柠檬黄)
2. New Red (新红)
3. Amaranth (苋菜红)
4. Carmine (胭脂红)
5. Sunset Yellow (日落黄)
6. Allura Red (诱惑红)
7. Brilliant Blue (亮蓝)
8. Erythrosine (赤藓红)