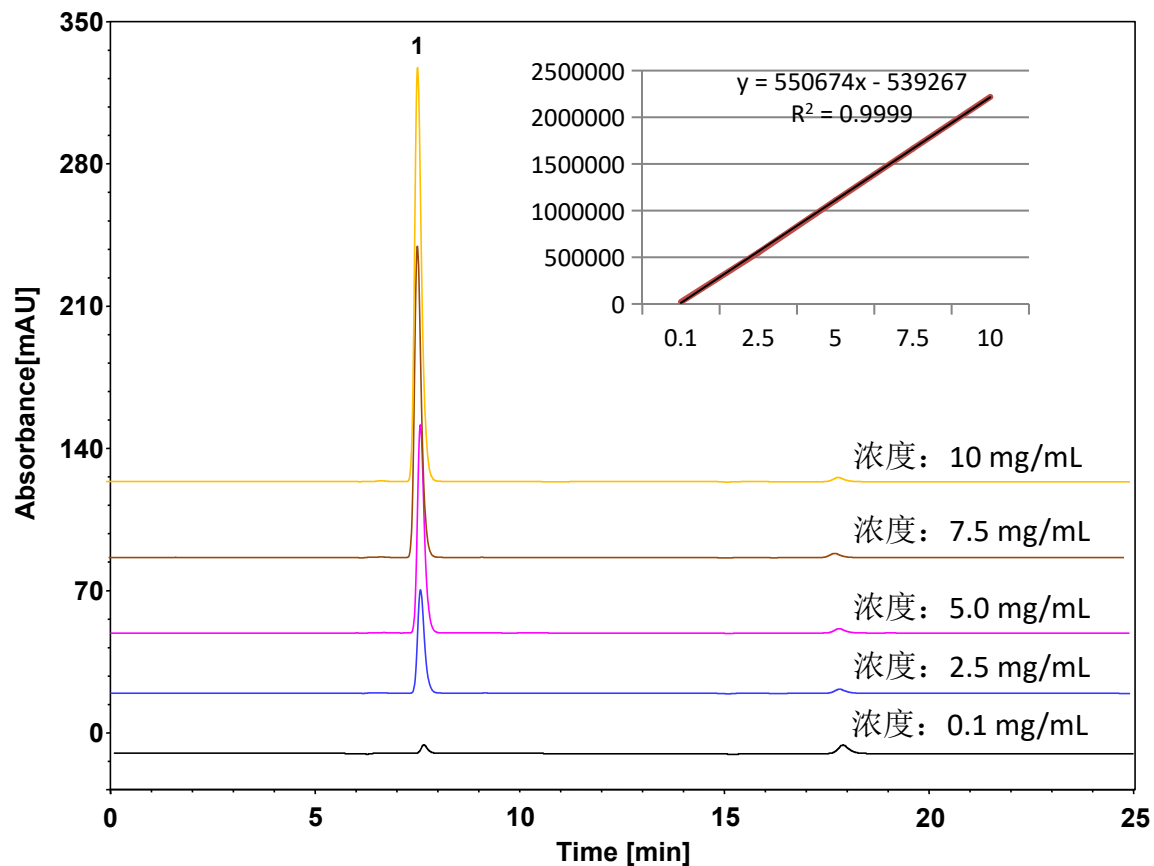


葡萄糖 (国标GB/T 20880-2018)



Column: ChromCore Sugar-10H, 6 μ m
Dimension: 7.8 \times 300 mm
Mobile Phase: 10 mM 硫酸水溶液
Flow Rate: 0.7 mL/min
Temperature: 柱温45 $^{\circ}$ C, RID40 $^{\circ}$ C
Injection: 20 μ L
Detection: RID
Sample: 葡萄糖