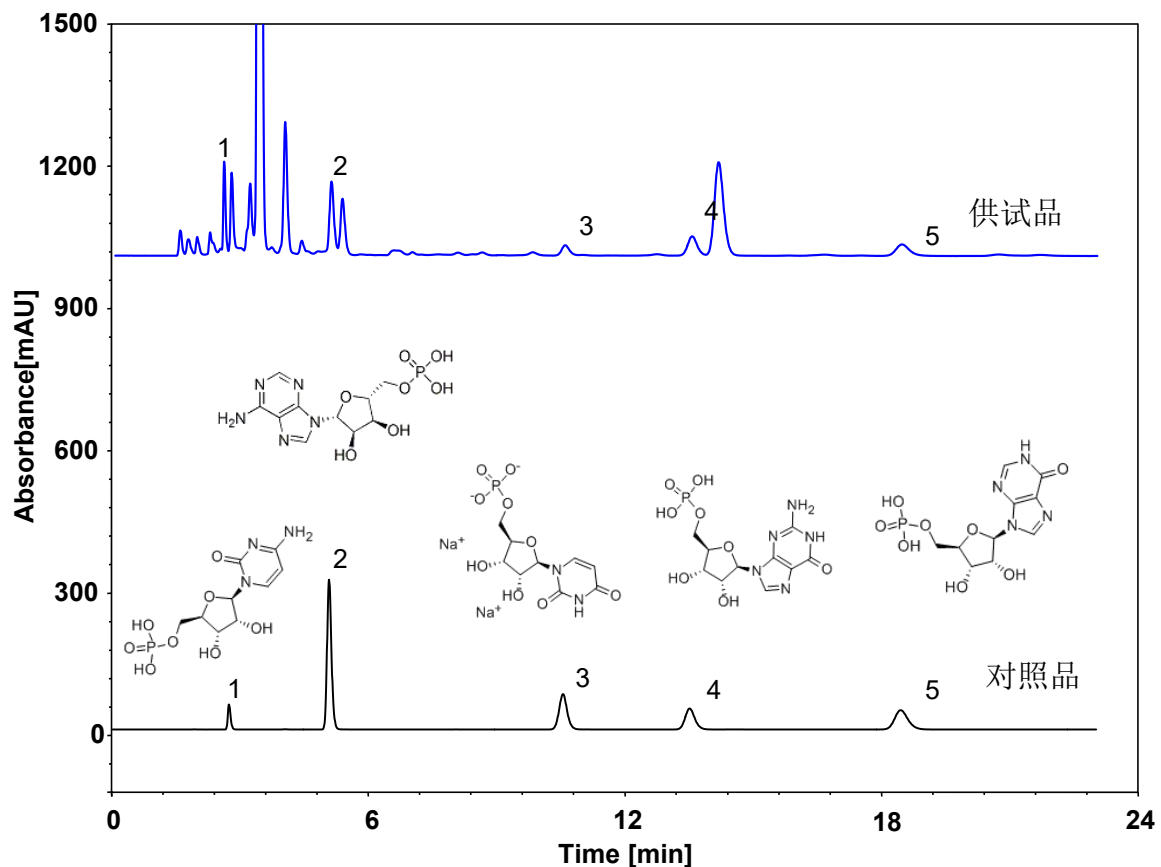


# 奶粉中五种核苷酸



Column: ChromCore 120 C18, 5  $\mu\text{m}$   
Dimension: 4.6  $\times$  250 mm  
Mobile Phase: 96/4 v/v 1.4 mmol/L 四丁基硫酸氢铵 & 10 mmol/L 磷酸二氢钾, pH2.5/甲醇  
Flow Rate: 1.0 mL/min  
Temperature: 25  $^{\circ}\text{C}$   
Injection: 10  $\mu\text{L}$   
Detection: UV 254 nm  
Peaks:  
1. CMP (胞嘧啶核苷酸)  
2. AMP (腺嘌呤核苷酸)  
3. UMP (尿嘧啶核苷酸)  
4. GMP (鸟嘌呤核苷酸)  
5. IMP (次黄嘌呤核苷酸)