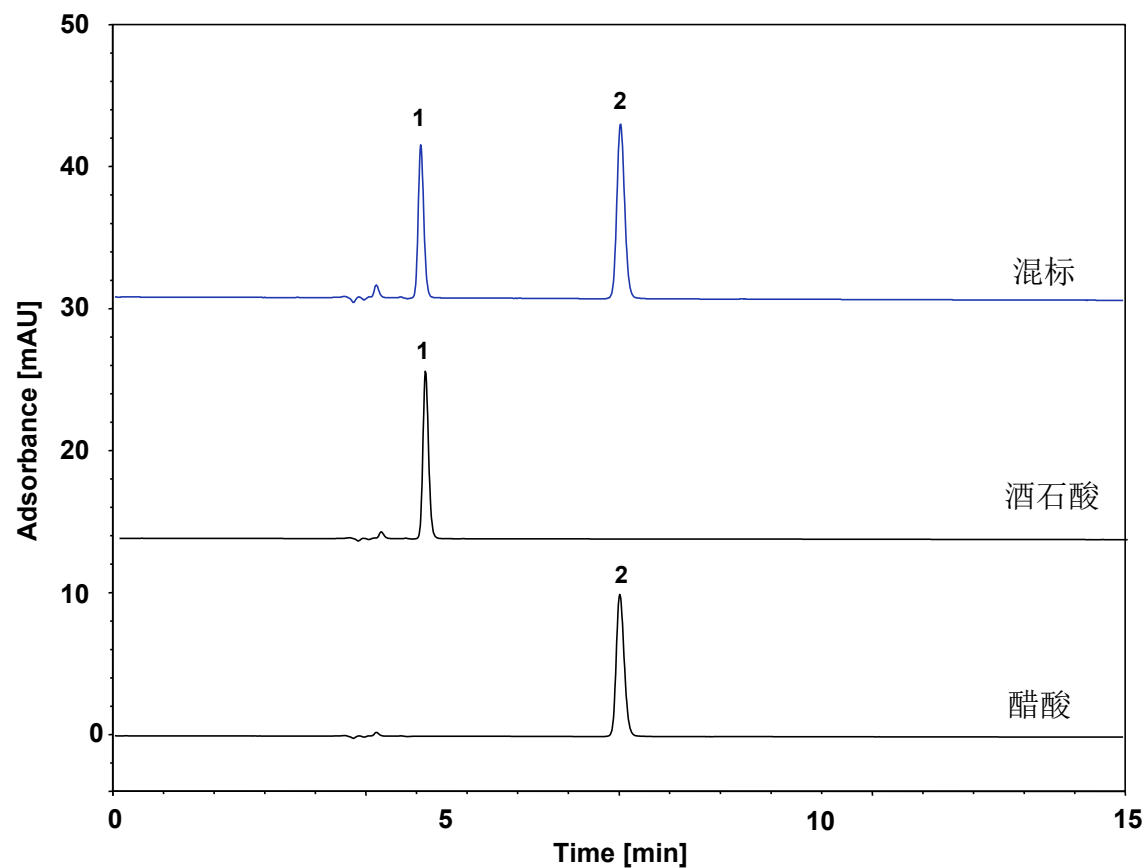
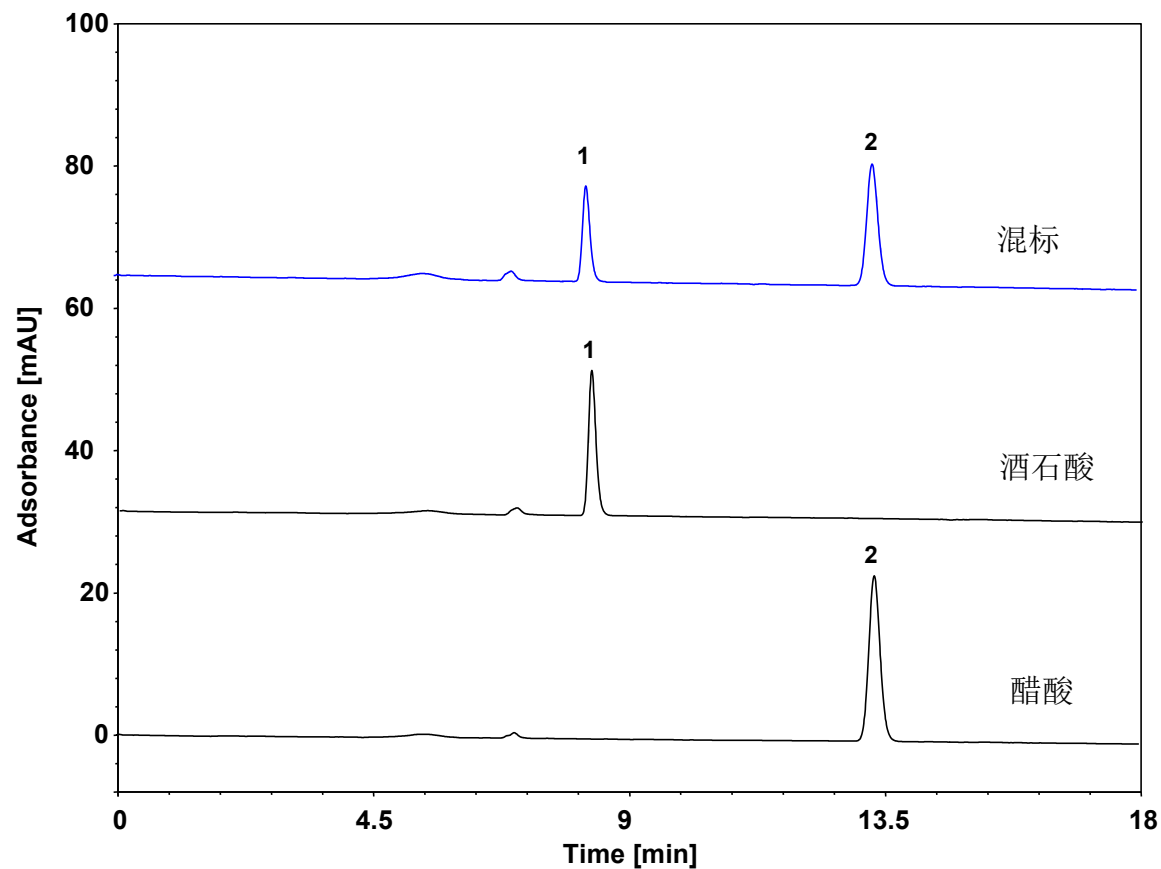


# 酒石酸与醋酸 (AR C18)



Column: ChromCore AR C18, 5  $\mu$ m  
Dimension: 4.6  $\times$  250 mm  
Mobile Phase: 25 mmol/L 磷酸二氢钾溶液, pH2.3  
Flow Rate: 0.8 mL/min  
Temperature: 25  $^{\circ}$ C  
Injection: 10  $\mu$ L  
Detection: UV 214 nm  
Peaks:  
1. Tartaric acid (酒石酸)  
2. Acetic acid (醋酸)

# 酒石酸与醋酸 (Sugar-10H)



Column: ChromCore Sugar-10H, 6  $\mu$ m  
Dimension: 7.8  $\times$  300 mm  
Mobile Phase: 5 mM 硫酸水溶液  
Flow Rate: 0.6 mL/min  
Temperature: 80  $^{\circ}$ C  
Injection: 10  $\mu$ L  
Detection: UV 210 nm  
Peaks:  
1. Tartaric acid (酒石酸)  
2. Acetic acid (醋酸)