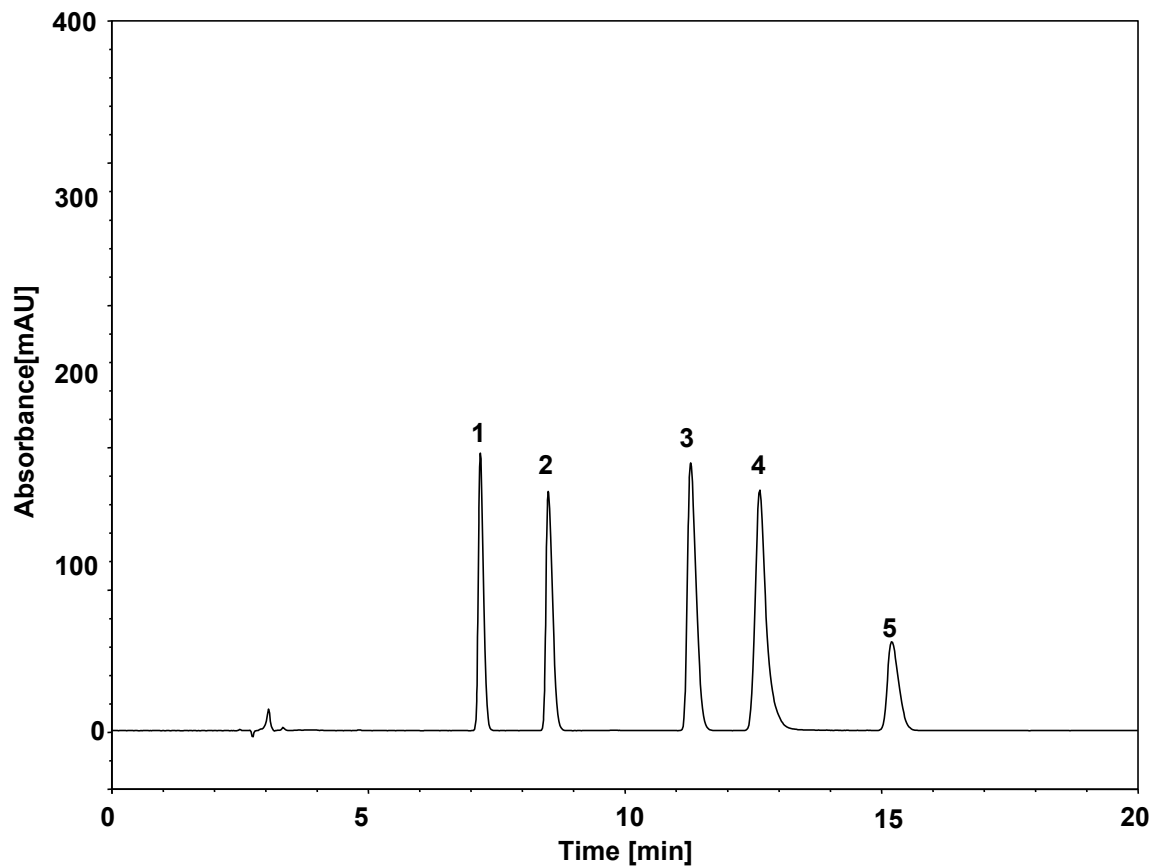


防腐剂 (GB5009.28-2016)



Column: ChromCore C18-P, 5 μ m
Dimension: 4.6 \times 250 mm
Mobile Phase: 95/5 v/v 20 mM乙酸铵, pH6.9/甲醇
Flow Rate: 1.0 mL/min
Temperature: 30 $^{\circ}$ C
Injection: 5 μ L
Detection: UV 230 nm
Sample: 混标
Diluter: 水
Peaks: 1. Acesulfame Potassium (安赛蜜)
2. Benzoic Acid (苯甲酸)
3. Sorbic Acid (山梨酸)
4. Dehydroacetic Acid (脱氢乙酸)
5. Saccharin Sodium (糖精钠)

| | | 保留时间 (min) | 拖尾因子 | 分离度 | 理论塔板数 |
|---|------|---------------|------|-------|-------|
| 1 | 安赛蜜 | 7.190 | 1.38 | 6.24 | 23853 |
| 2 | 苯甲酸 | 8.513 | 1.58 | 10.03 | 20450 |
| 3 | 山梨酸 | 11.287 | 1.53 | 3.94 | 20580 |
| 4 | 脱氢乙酸 | 12.633 | 1.53 | 6.64 | 18715 |
| 5 | 糖精钠 | 15.207 | 1.41 | n.a. | 22540 |