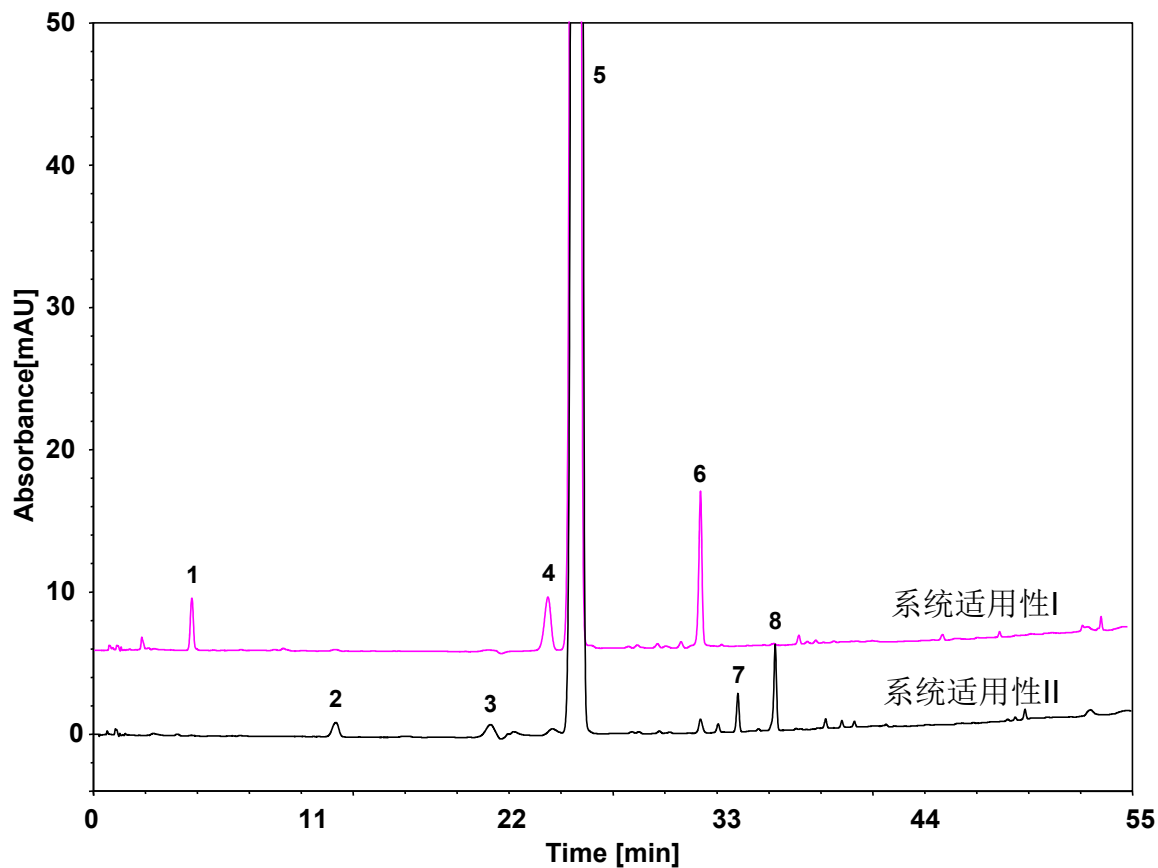


紫杉醇 (EP)



Column: ChromCore AR C18, 3 μ m

Dimension: 4.6 \times 150 mm

Mobile Phase: A) 乙腈

B) 2/3 v/v 乙腈/水

Gradient:	t (min)	%A	%B
	0	0	100
	20	0	100
	60	90	10
	62	0	100
	70	0	100

Flow Rate: 1.2 mL/min

Temperature: 35 $^{\circ}$ C

Injection: 15 μ L

Detection: UV 227 nm

Peaks:

1. 杂质N
2. 杂质G
3. 杂质A
4. 杂质H
5. 紫杉醇
6. 杂质E
7. 杂质I
8. 杂质L