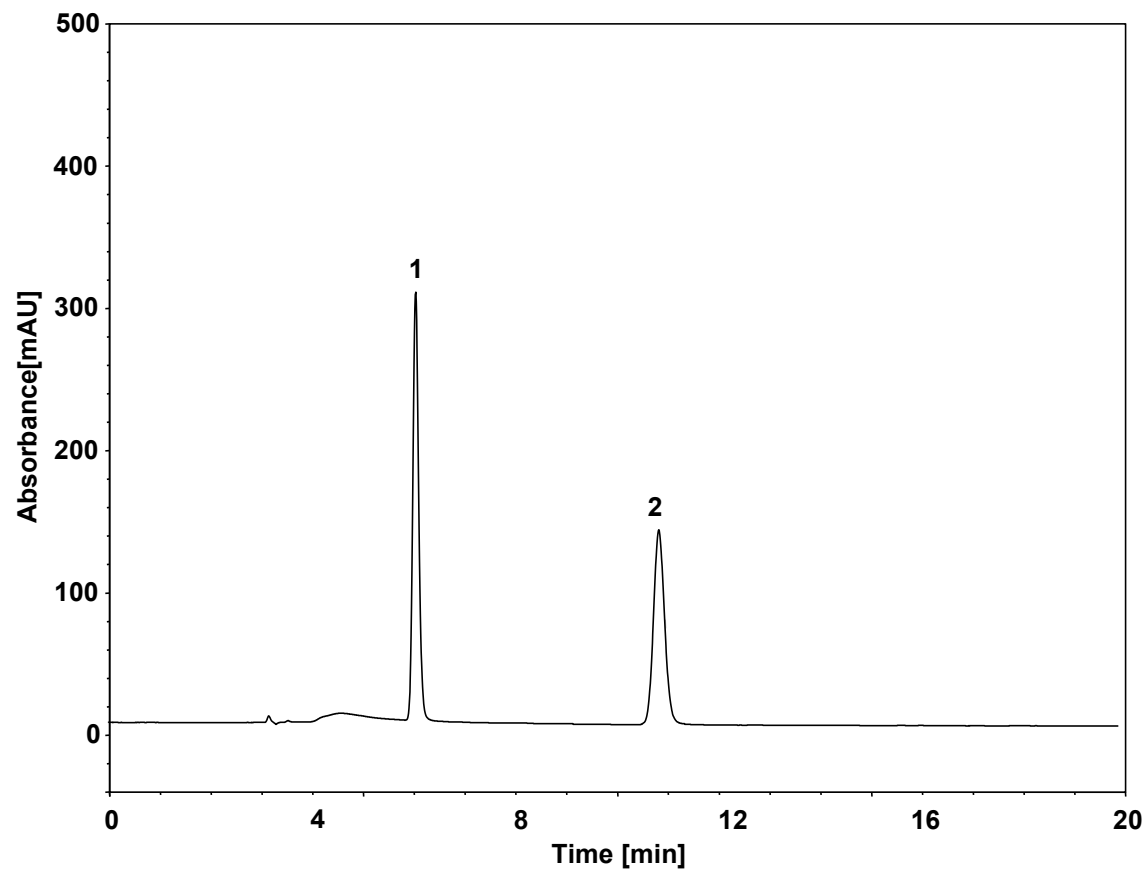


盐酸吗啉胍



Column: ChromCore 300 SCX, 5 μ m
Dimension: 4.6 \times 250 mm
Mobile Phase: 10/90 v/v Acetonitrile/150 mM $\text{NH}_4\text{H}_2\text{PO}_4$, pH2.5
Flow Rate: 1.0 mL/min
Temperature: 30 $^\circ\text{C}$
Injection: 2 μL
Detection: UV 198 nm
Peaks: 1. 吗啉-4-脒基盐酸盐
2. 盐酸吗啉胍