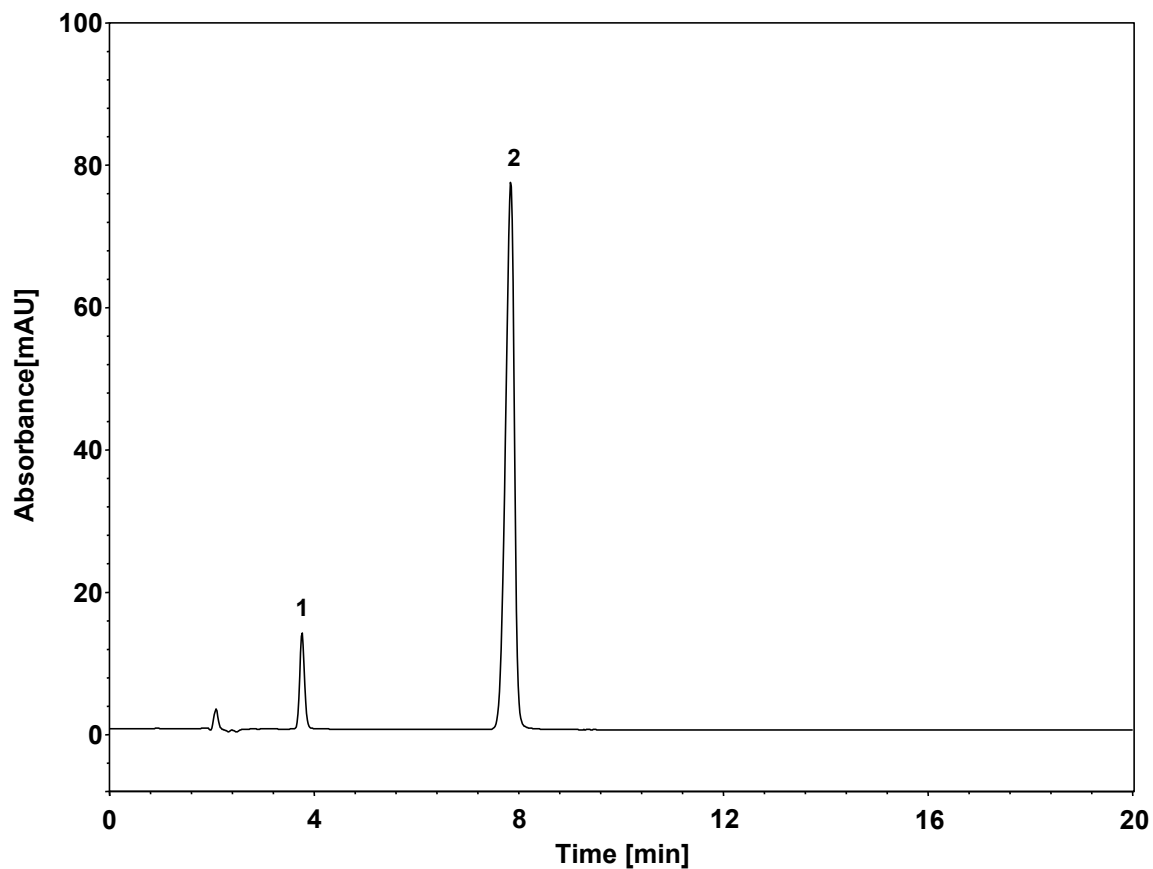
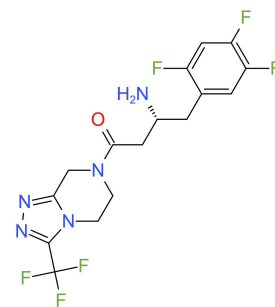


西格列汀二甲双胍缓释片

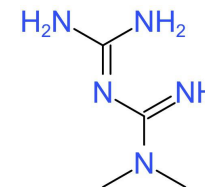


Column: ChromCore 300 SCX, 5 μ m
Dimension: 4.6 \times 150 mm
Mobile Phase: 25/75 v/v 乙腈/6.8 g/L 磷酸二氢钾溶液, pH3.5
Flow Rate: 1.0 mL/min
Temperature: 30 $^{\circ}$ C
Injection: 10 μ L
Detection: UV 255 nm
Sample: 西格列汀二甲双胍
Peaks: 1. 西格列汀
2. 二甲双胍

	保留时间 (min)	理论塔板数 (USP)	拖尾因子 (USP)	分离度 (USP)
西格列汀	3.779	7710	1.072	/
二甲双胍	7.853	9581	0.846	16.3



西格列汀



二甲双胍