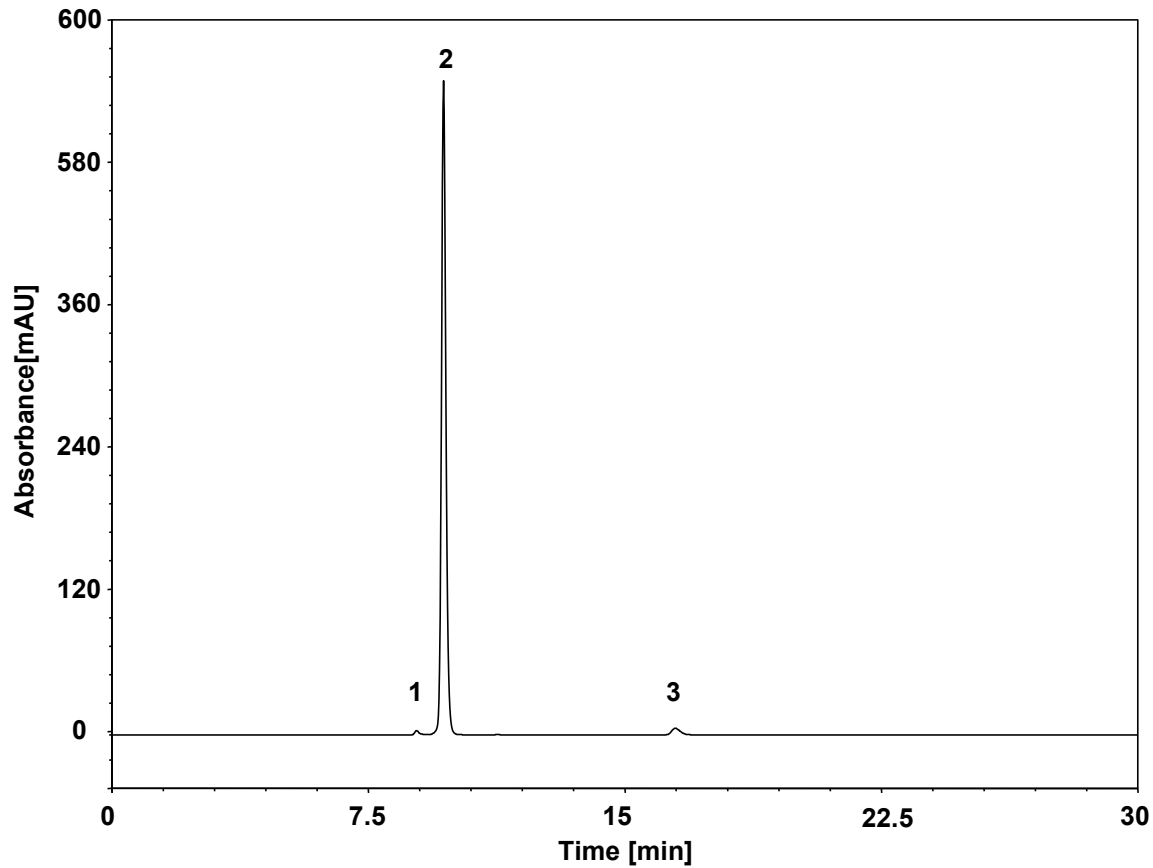


# 头孢洛林



Column: BioCore SEC-120, 5  $\mu$ m  
Dimension: 7.8  $\times$  300 mm  
Mobile Phase: 95/5 v/v 5 mM phosphate buffer, pH7.0/MeCN  
Flow Rate: 0.8 mL/min  
Temperature: 25  $^{\circ}$ C  
Injection: 10  $\mu$ L  
Detection: UV 254 nm  
Sample: 头孢洛林供试品溶液  
Peaks:  
1. 杂质1  
2. 头孢洛林  
3. 杂质2