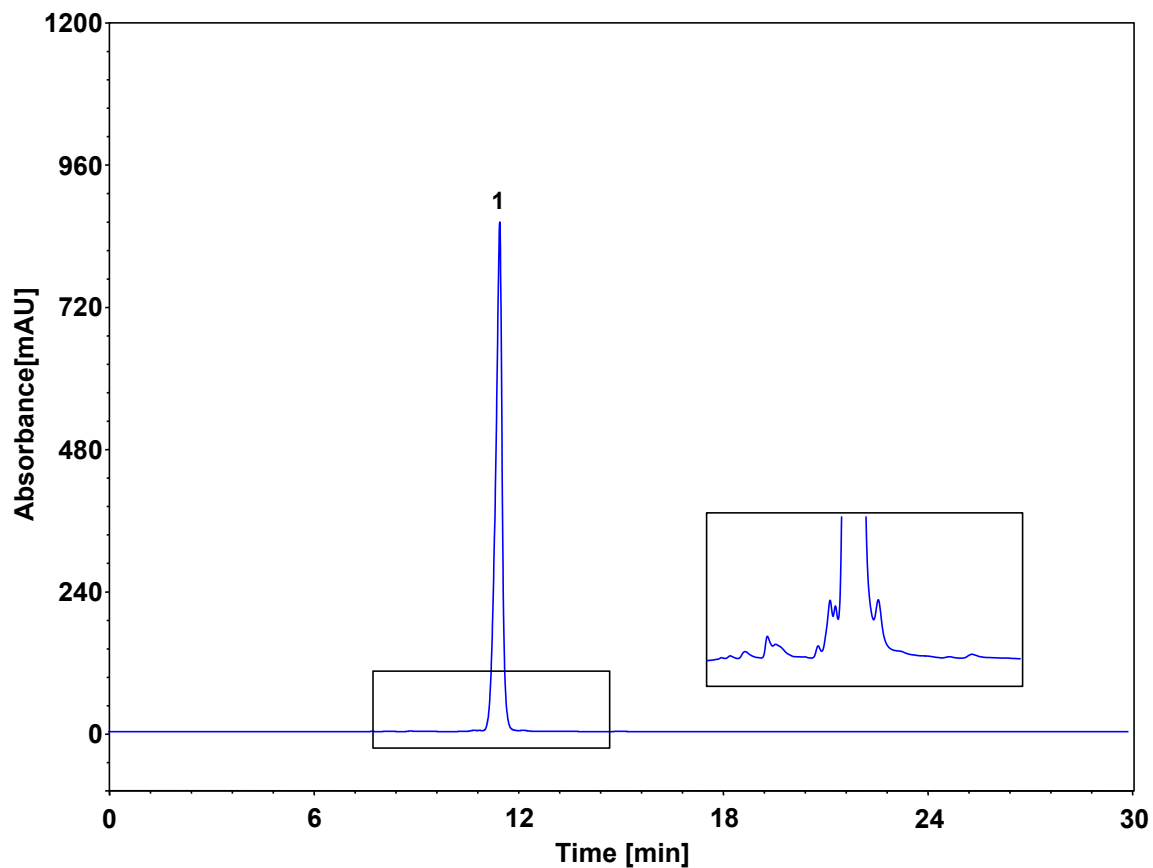


头孢地尼



Columns: BioCore SEC-120, 5 μm
Dimension: 7.8 \times 300 mm
Mobile Phase: Phosphate buffer, pH7.0
Flow Rate: 0.8 mL/min
Temperature: 25 $^{\circ}\text{C}$
Injection: 10 μL
Detection: UV 254 nm
Sample: 头孢地尼 (0.5 mg/mL, 流动相溶解)
Peak: 1.头孢地尼