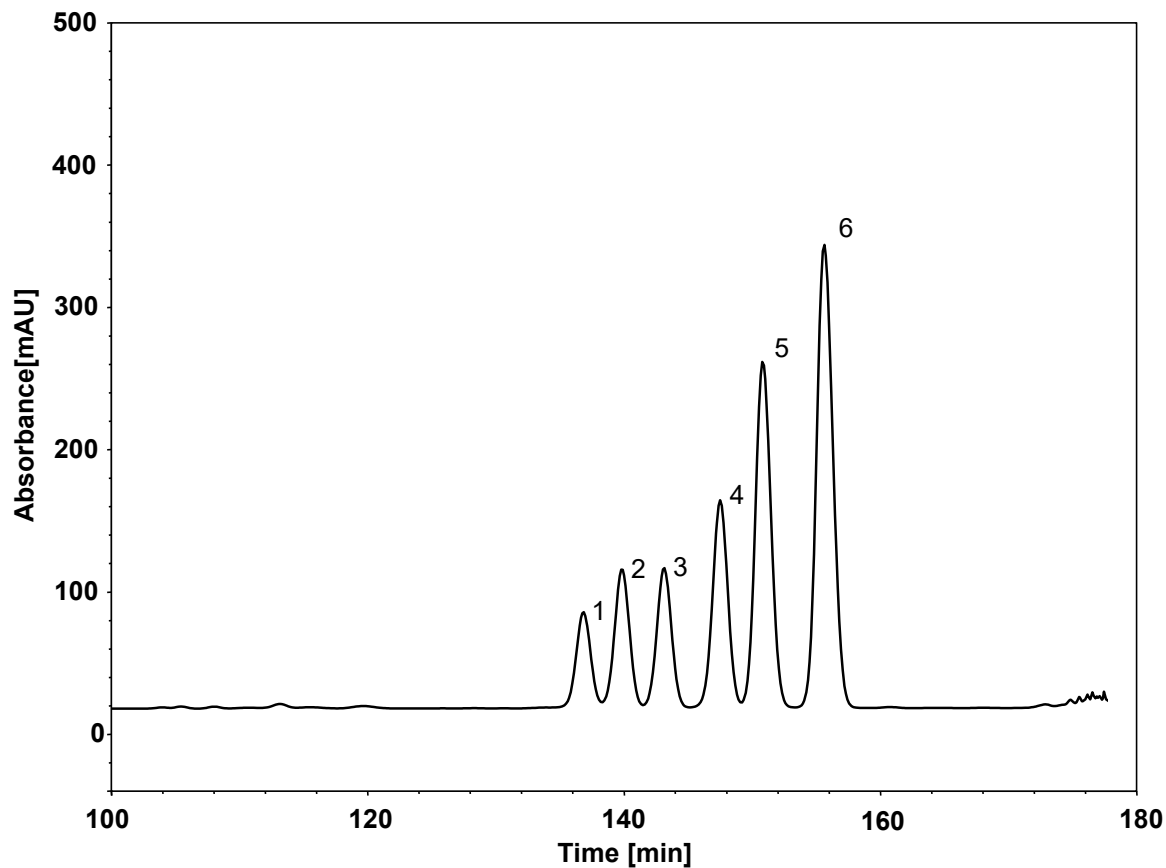


# 替普瑞酮与其异构体



Column: ChromCore C30, 5  $\mu$ m

Dimension: 4.6  $\times$  250 mm

Mobile Phase: A) 水  
B) 乙腈

Gradient:	t (min)	%A	%B
	0	40	60
	20	40	60
	170	25	75
	180	10	90
	190	10	90

Flow Rate: 1.0 mL/min

Temperature: 20  $^{\circ}$ C

Injection: 5  $\mu$ L

Detection: UV 205 nm

Peaks: 1~4. Teprenone Isomer (替普瑞酮杂质)

5~6. Teprenone (替普瑞酮及其异构体)

