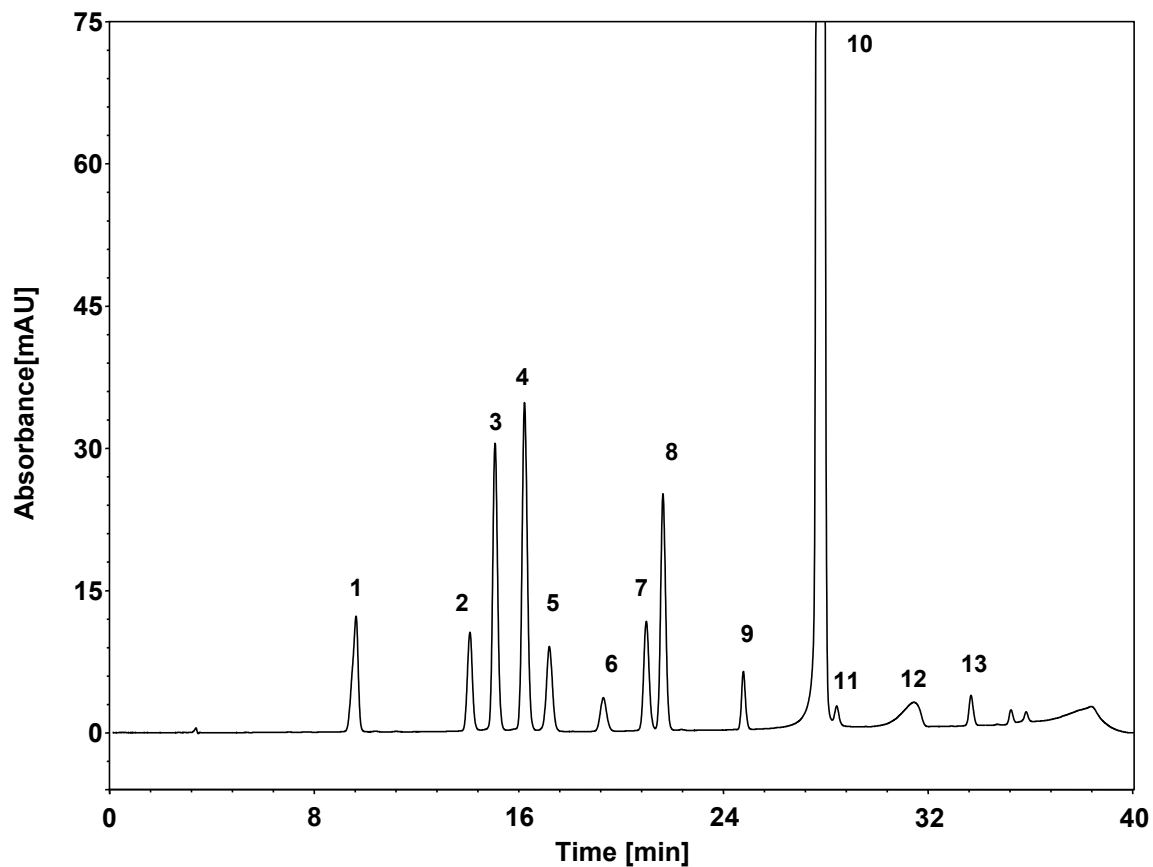


# 那氟沙星



Column: ChromCore 120 C18, 5  $\mu$ m  
Dimension: 4.6  $\times$  250 mm  
Mobile Phase: A) 50/50 v/v 四氢呋喃-乙腈 (5/95)/ 0.01 M 乙酸铵溶液, pH3.2  
B) 20/80 v/v 四氢呋喃-乙腈 (5/95)/ 0.01 M 乙酸铵溶液, pH3.2

Gradient:

t (min)	%A	%B
0	0	100
10	15	85
15	15	85
35	85	15
36	0	100
50	0	100

Flow Rate: 1.0 mL/min  
Temperature: 25  $^{\circ}$ C  
Injection: 10  $\mu$ L  
Detection: UV 280 nm  
Sample: 那氟沙星  
Peaks: 1~9. 杂质  
10. 那氟沙星  
11~13. 杂质