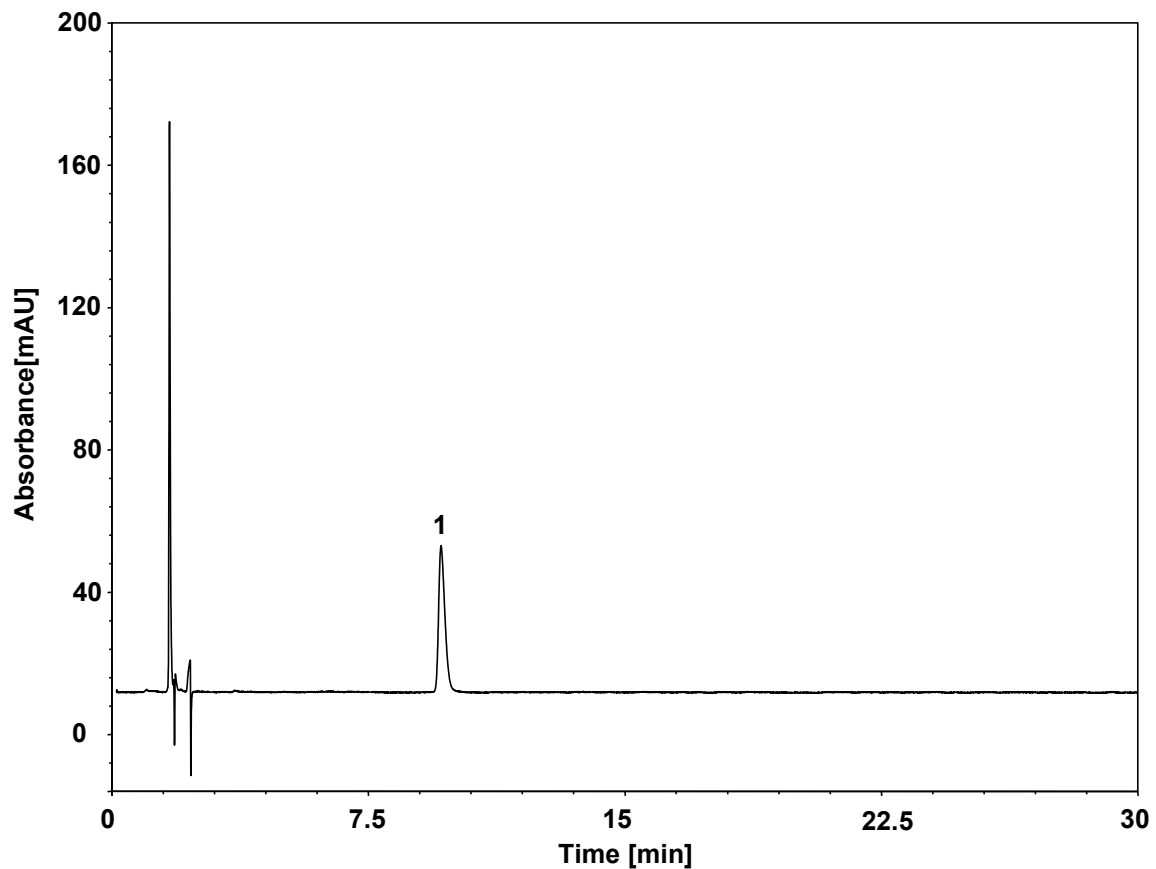


美洛昔康片



Column: ChromCore C18, 5 μ m
Dimension: 4.6 \times 100 mm
Mobile Phase: 63/37 v/v 2 g/L 磷酸氢二铵溶液, pH7.0/甲醇:异丙醇 (65:10)
Flow Rate: 0.8 mL/min
Temperature: 30 $^{\circ}$ C
Injection: 10 μ L
Detection: UV 254 nm
Sample: 美洛昔康