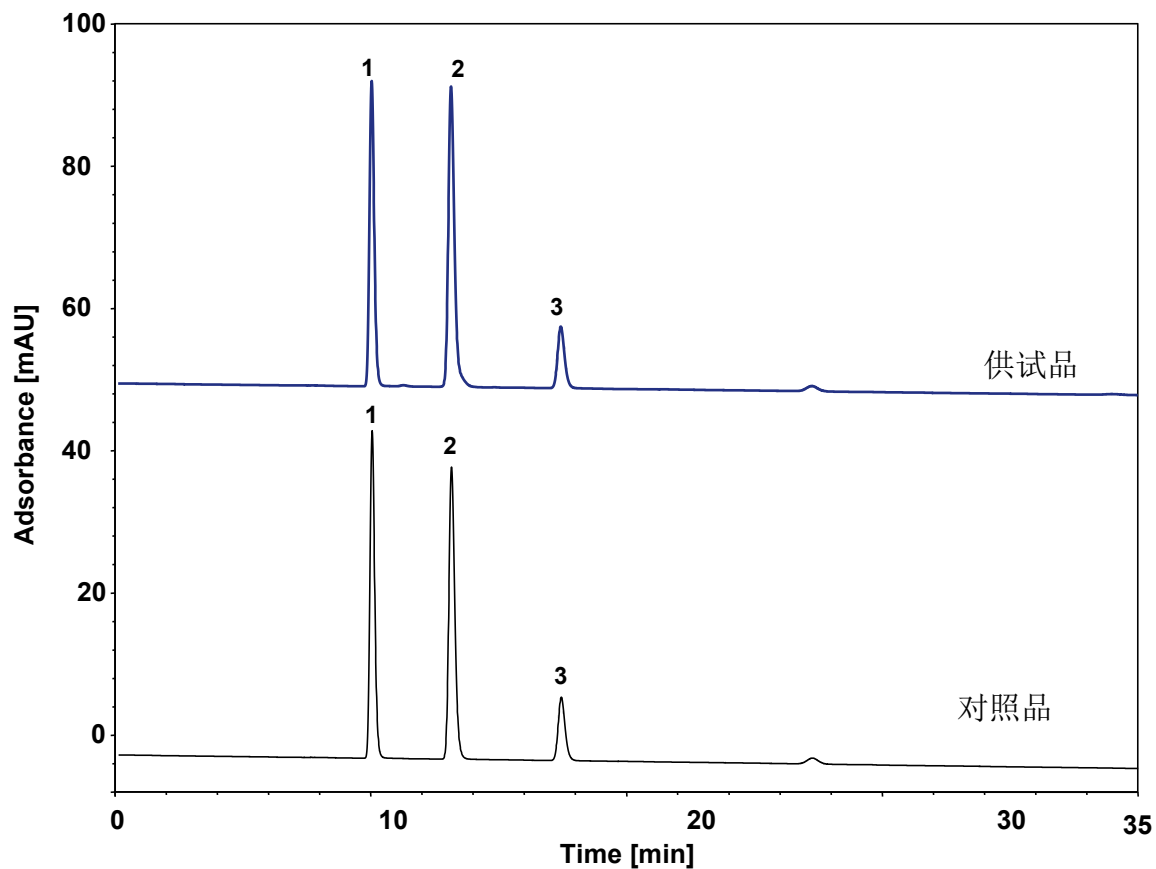


甘油果糖氯化钠注射液



Column: ChromCore Sugar-10H, 6 μ m
Dimension: 7.8 \times 300 mm
Mobile Phase: 0.04 M 磷酸水溶液
Flow Rate: 0.5 mL/min
Temperature: 50 $^{\circ}$ C
Injection: 20 μ L
Detection: UV 200 nm
Peaks:
1. 氯离子
2. 果糖
3. 甘油