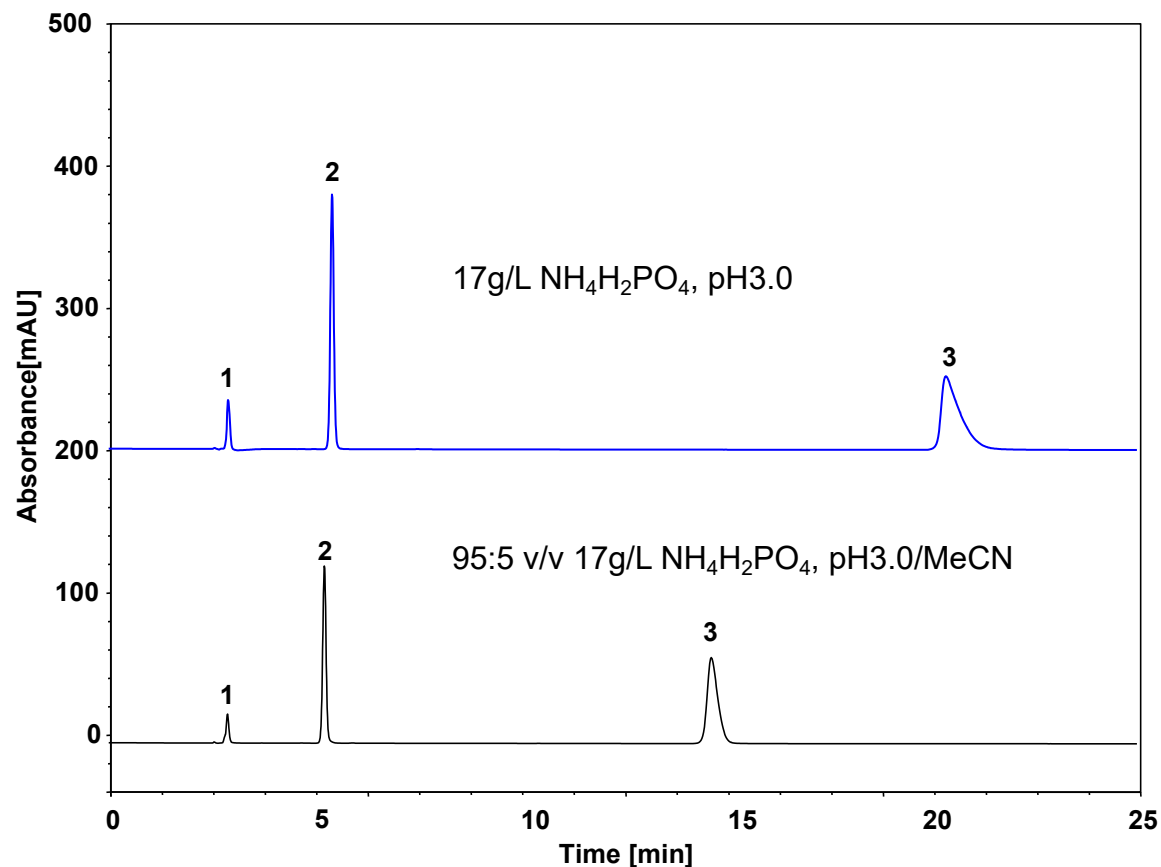
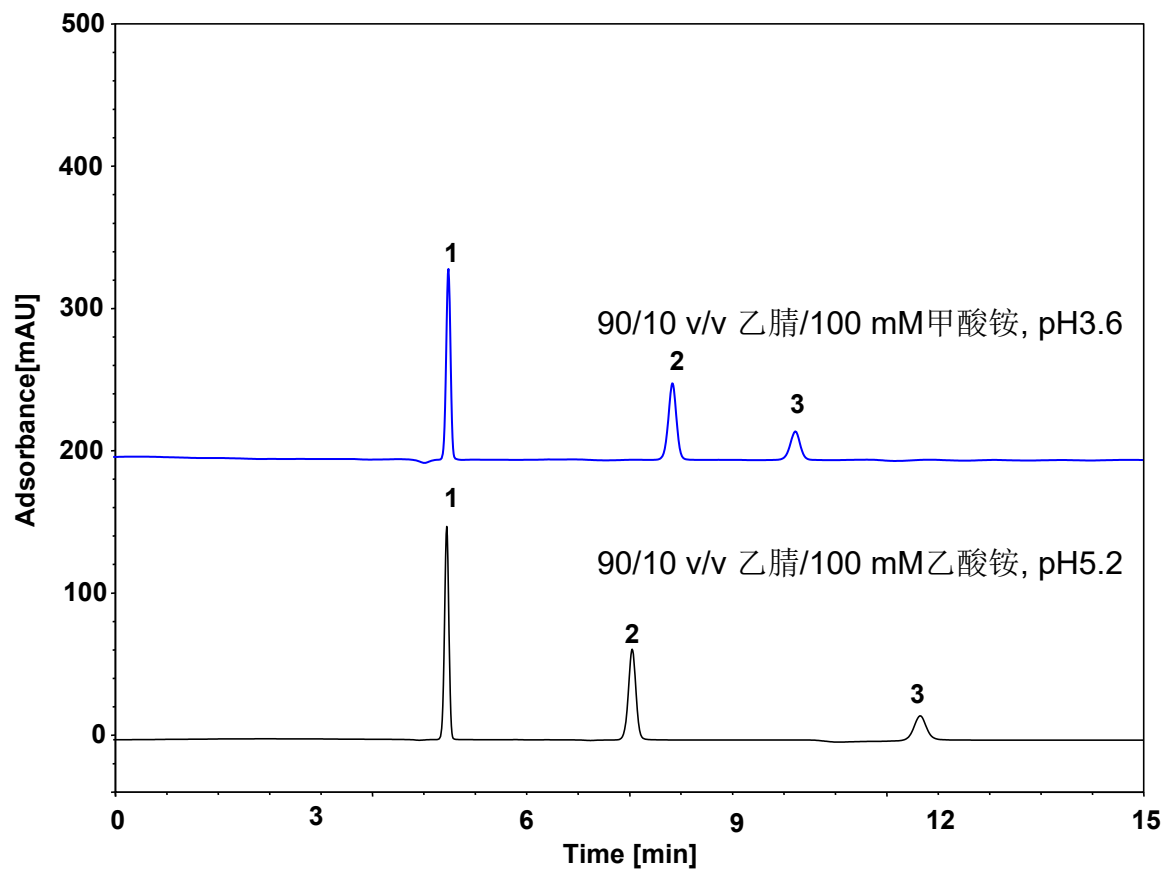


# 二甲双胍 (300 SCX) (中国药典)



Column: ChromCore 300 SCX, 5  $\mu$ m  
Dimension: 4.6  $\times$  250 mm  
Mobile Phase:  
Blue: 17g/L NH<sub>4</sub>H<sub>2</sub>PO<sub>4</sub>, pH3.0 (CP2015)  
Black: 95:5 v/v 17g/L NH<sub>4</sub>H<sub>2</sub>PO<sub>4</sub>, pH3.0/MeCN  
Flow Rate: 1.0 mL/min  
Temperature: 30  $^{\circ}$ C  
Injection: 5  $\mu$ L  
Detection: 218 nm  
Peaks:  
1. Dicyandiamide (二氰二胺)  
2. Melamine (三聚氰胺)  
3. Metformin (二甲双胍)

# 二甲双胍 (HILIC-Amide)



Column: ChromCore HILIC-Amide, 5  $\mu$ m

Dimension: 4.6  $\times$  250 mm

Mobile Phase:

Blue: 90/10 v/v 乙腈/100 mM甲酸铵, pH3.6

Black: 90/10 v/v 乙腈/100 mM乙酸铵, pH5.2

Flow Rate: 1.0 mL/min

Temperature: 30  $^{\circ}$ C

Injection: 5  $\mu$ L

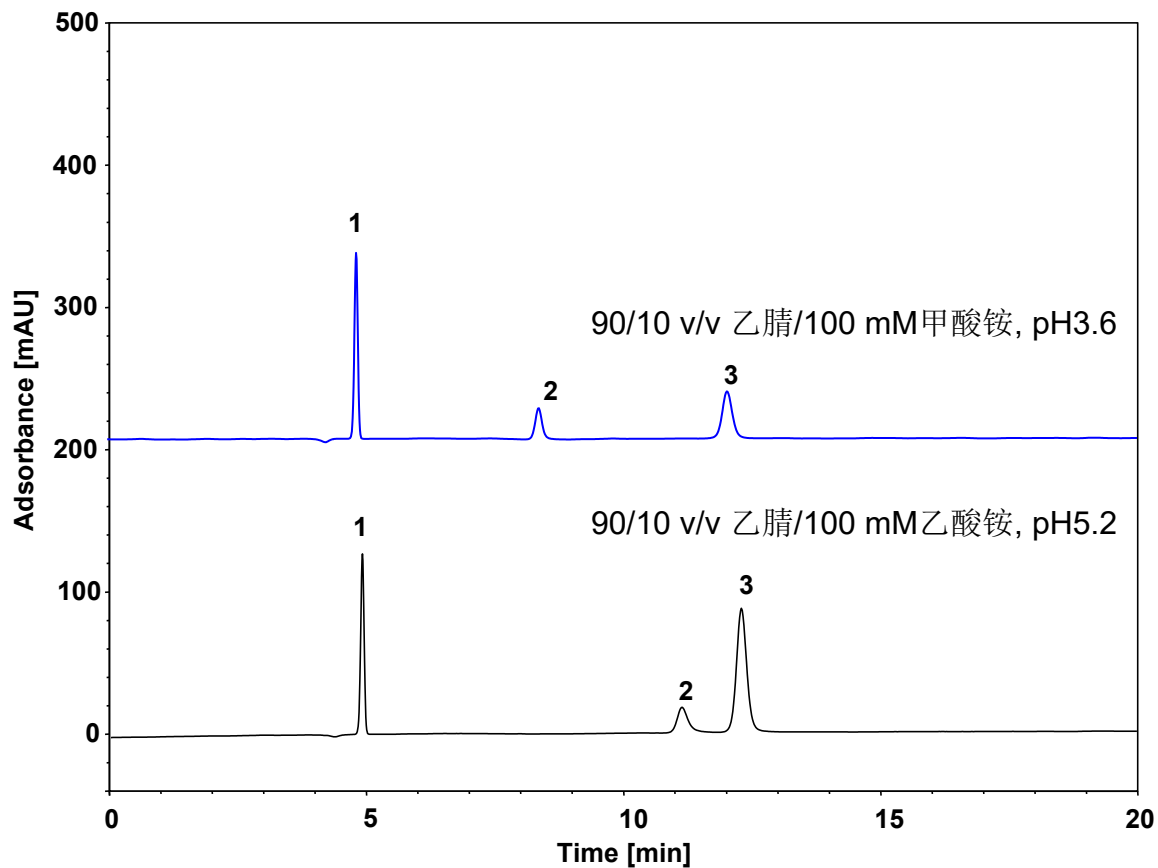
Detection: 218 nm

Peaks: 1. Dicyandiamide (二氰二胺)

2. Melamine (三聚氰胺)

3. Metformin (二甲双胍)

# 二甲双胍 (HILIC-Diol)



Column: ChromCore HILIC-Diol, 5  $\mu$ m  
Dimension: 4.6  $\times$  250 mm  
Mobile Phase:  
Blue: 90/10 v/v 乙腈/100 mM甲酸铵, pH3.6  
Black: 90/10 v/v 乙腈/100 mM乙酸铵, pH5.2  
Flow Rate: 1.0 mL/min  
Temperature: 30  $^{\circ}$ C  
Injection: 5  $\mu$ L  
Detection: 218 nm  
Peaks:  
1. Dicyandiamide (二氰二胺)  
2. Metformin (二甲双胍)  
3. Melamine (三聚氰胺)