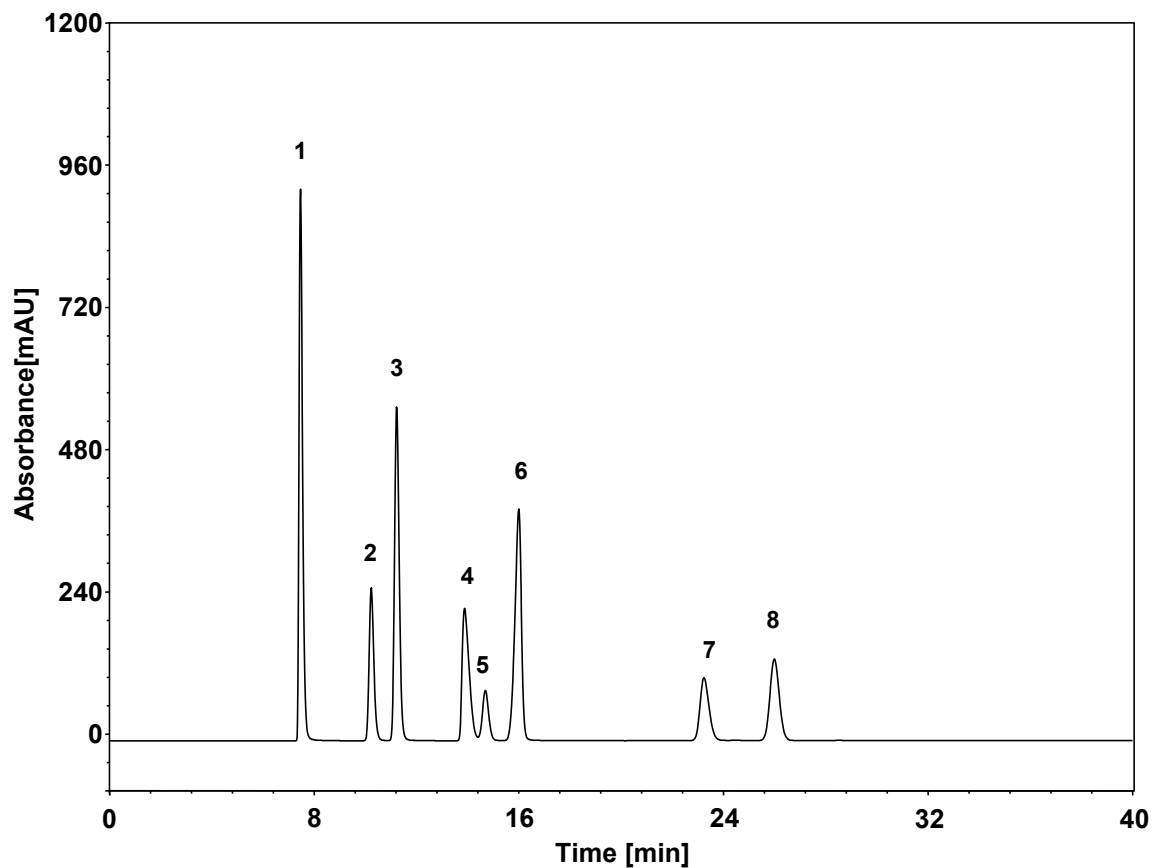


胞磷胆碱钠



Column: ChromCore 120 C18, 5 μm
Dimension: 4.6 \times 250 mm
Mobile Phase: 磷酸三乙胺缓冲盐, pH5.0
Flow Rate: 0.5 mL/min
Temperature: 30 $^{\circ}\text{C}$
Injection: 20 μL
Detection: UV 276 nm
Sample: 胞磷胆碱钠混标
Peaks:
1. 胞嘧啶
2. 胞磷胆碱钠
3. 尿嘧啶
4. 胞苷酸
5. 尿磷胆碱钠
6. 胞苷
7. 尿苷酸
8. 鸟苷