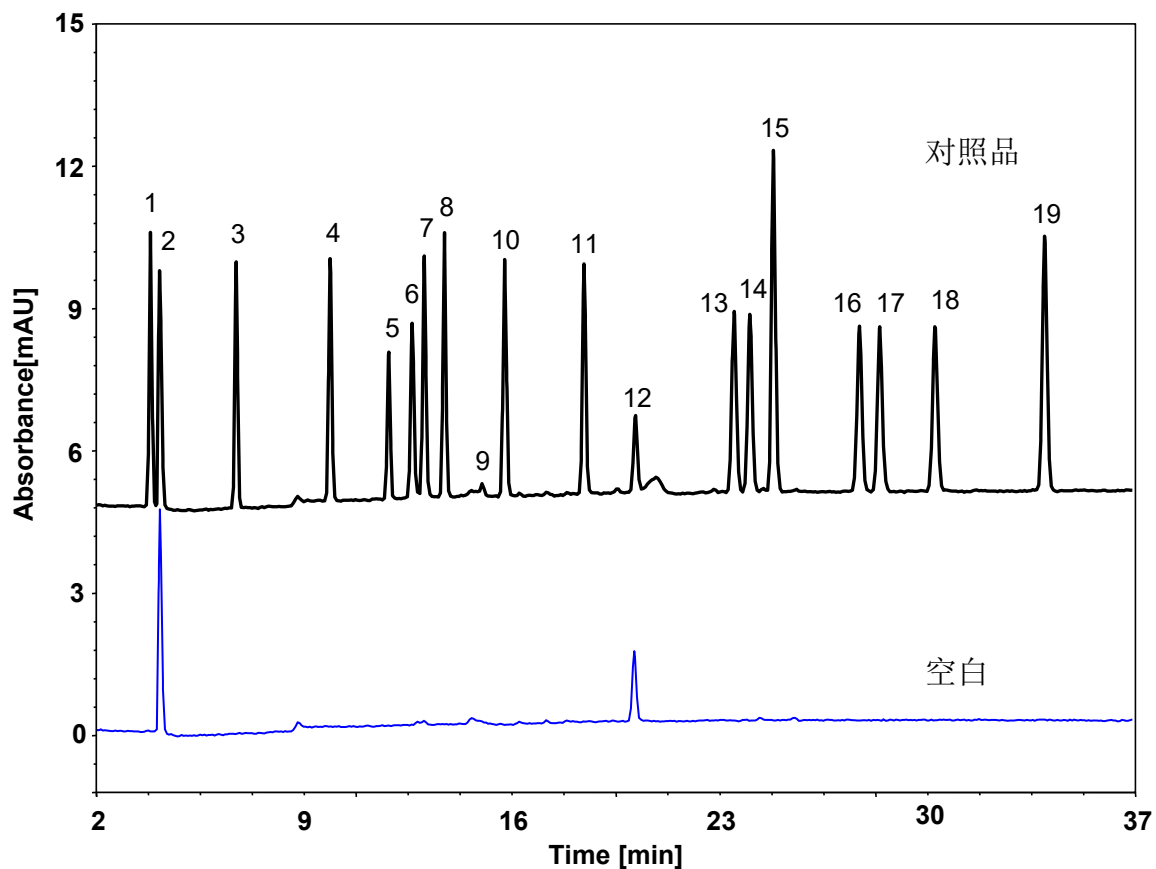


# 氨基酸



Column: ChromCore C18, 5  $\mu$ m  
Dimension: 4.6  $\times$  150 mm  
Mobile Phase: A) 50/50 v/v 甲醇/乙腈  
B) 50 mM 磷酸氢二钠水溶液, pH7.8

Gradient:

t (min)	%A	%B
0	3	97
2	3	97
16	22	78
30	35	65
38	70	30

Flow Rate: 1.5 mL/min

Temperature: 35  $^{\circ}$ C

Injection: 2  $\mu$ L

Detection: UV 338 nm

Derivation: 安捷伦氨基酸衍生方法

(原理: 一级氨基酸与邻苯二甲醛 (OPA)柱前衍生, 二级氨基酸与9-芴基氯甲酸甲酯 (FMOC)柱前衍生)

- Peaks:
- |         |          |
|---------|----------|
| 1. Asp  | 2. 衍生背景  |
| 3. Glu  | 4. Ser   |
| 5. His  | 6. Gly   |
| 7. Thr  | 8. Arg   |
| 9. 衍生背景 | 10. Ala  |
| 11. Tyr | 12. 衍生背景 |
| 13. Val | 14. Cys  |
| 15. Met | 16. Phe  |
| 17. Ile | 18. Leu  |
| 19. Lys |          |