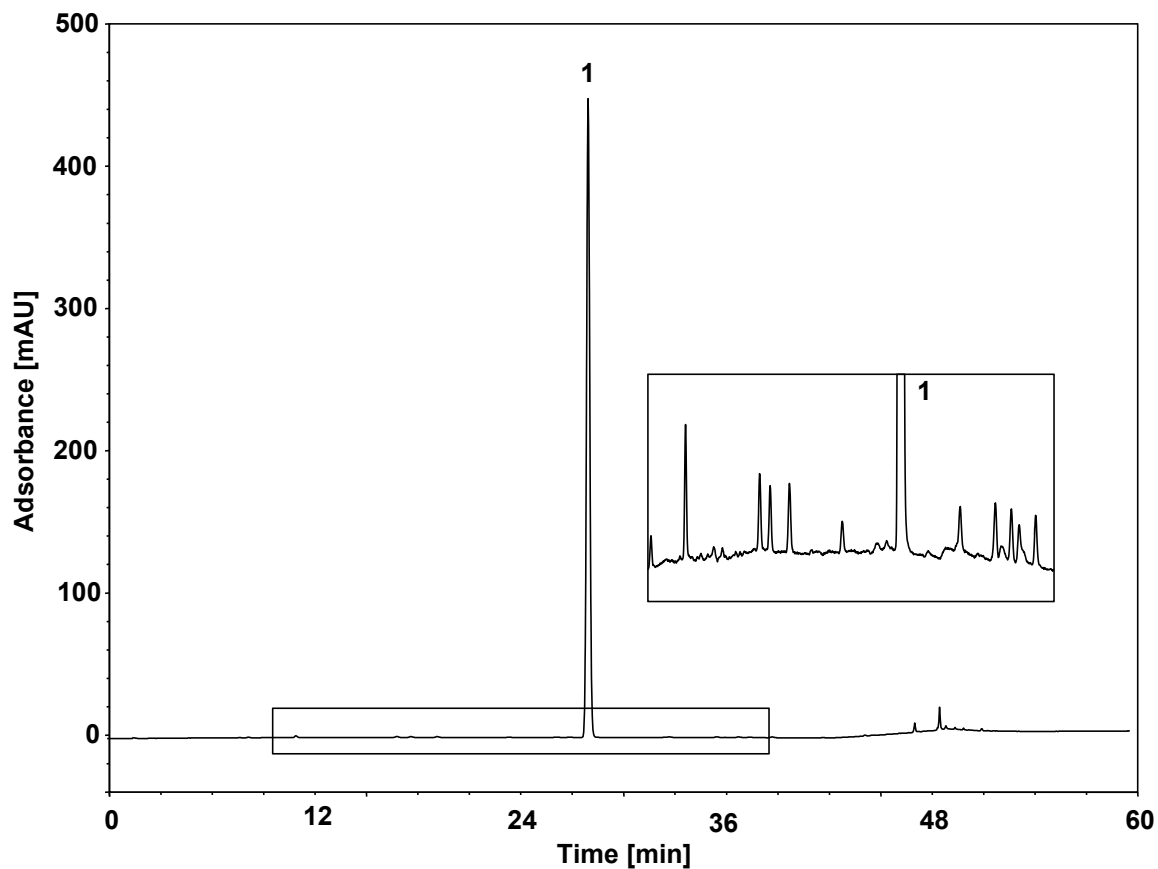


# 阿比特龙 (参考USP 40)



Column: ChromCore Polar C18, 3  $\mu$ m

Dimension: 4.6  $\times$  150 mm

Mobile Phase: A) 10 mM 乙酸铵水溶液

B) 乙腈

C) 乙醇

Gradient:	t (min)	%A	%B	%C
	-10	50	20	30
	0	50	20	30
	40	15	55	30
	47	0	20	80
	58	0	20	80
	60	50	20	30

Flow Rate: 1.0 mL/min

Temperature: 30  $^{\circ}$ C

Injection: 10  $\mu$ L

Detection: UV 254 nm

Sample: USP阿比特龙系统适用性混标

Peak: 1. 阿比特龙