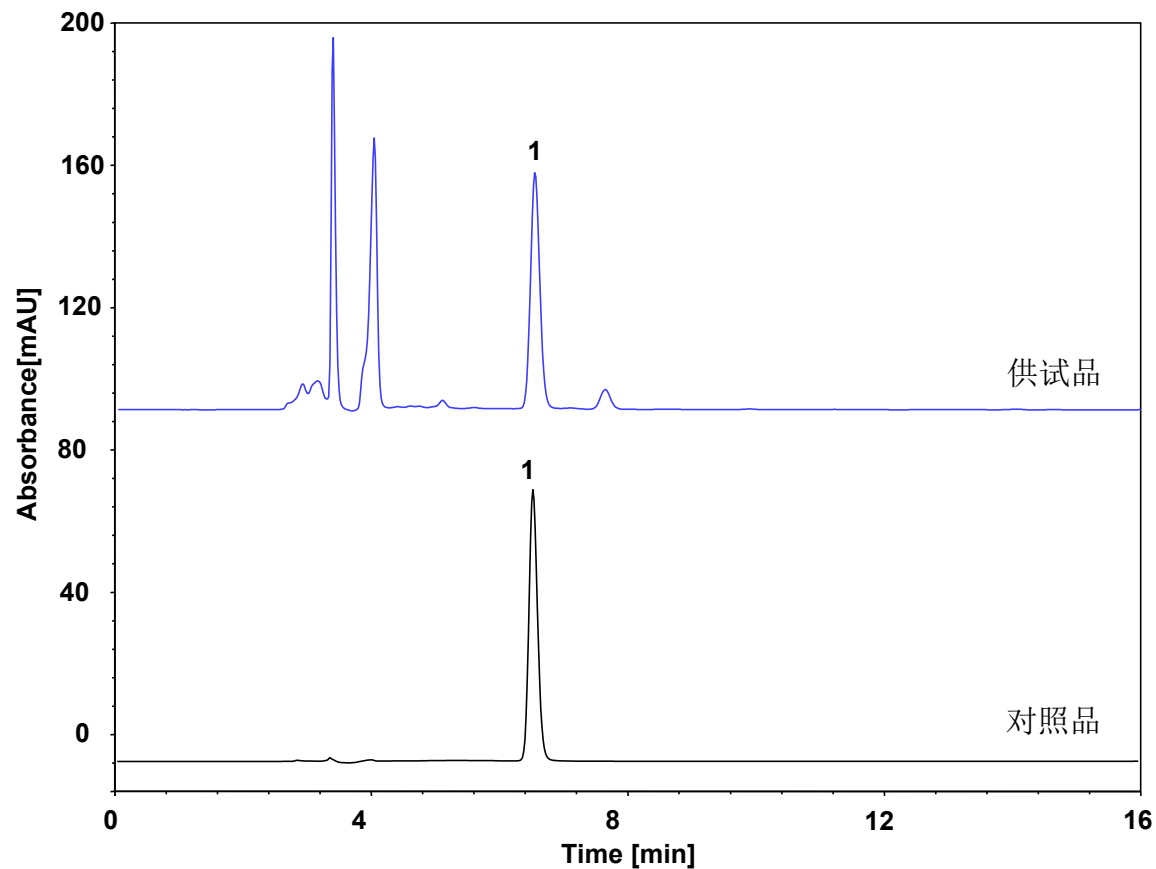
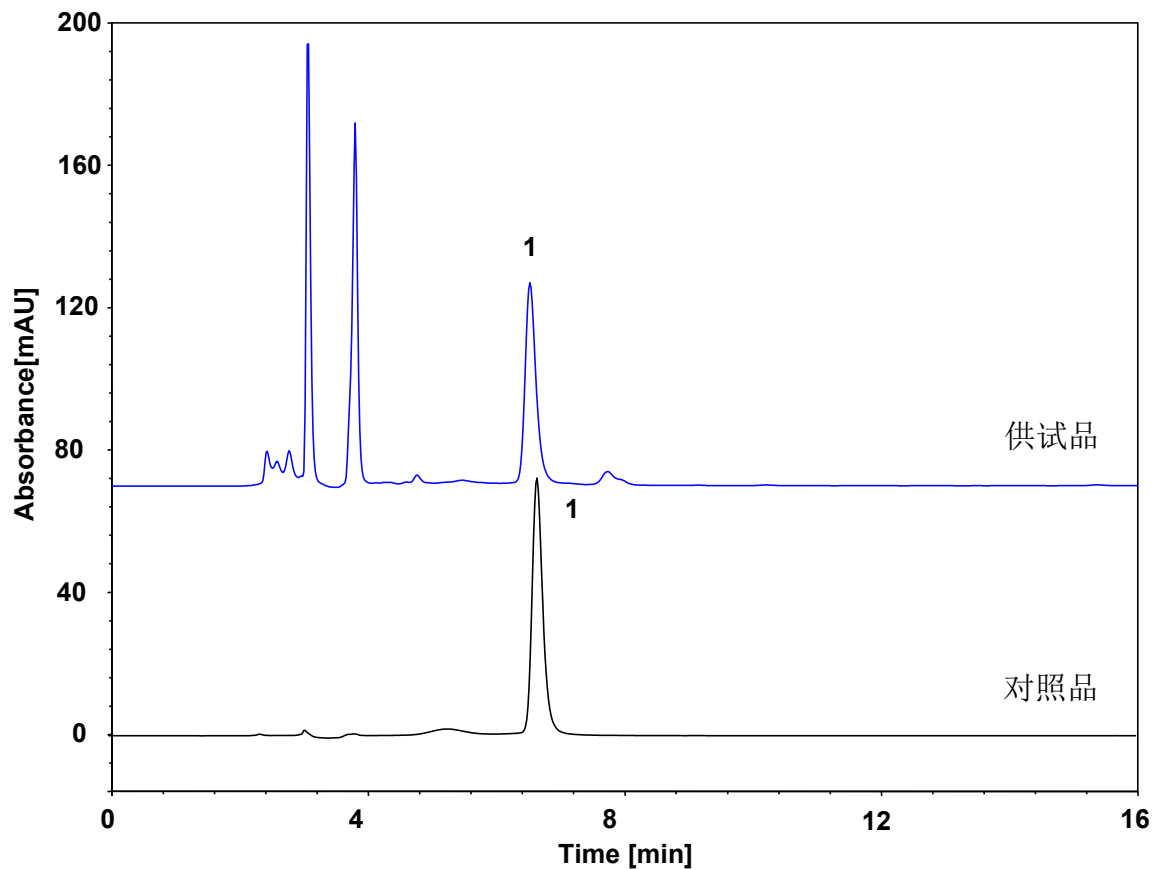


知母-芒果苷 (ChromCore C18) (中国药典)



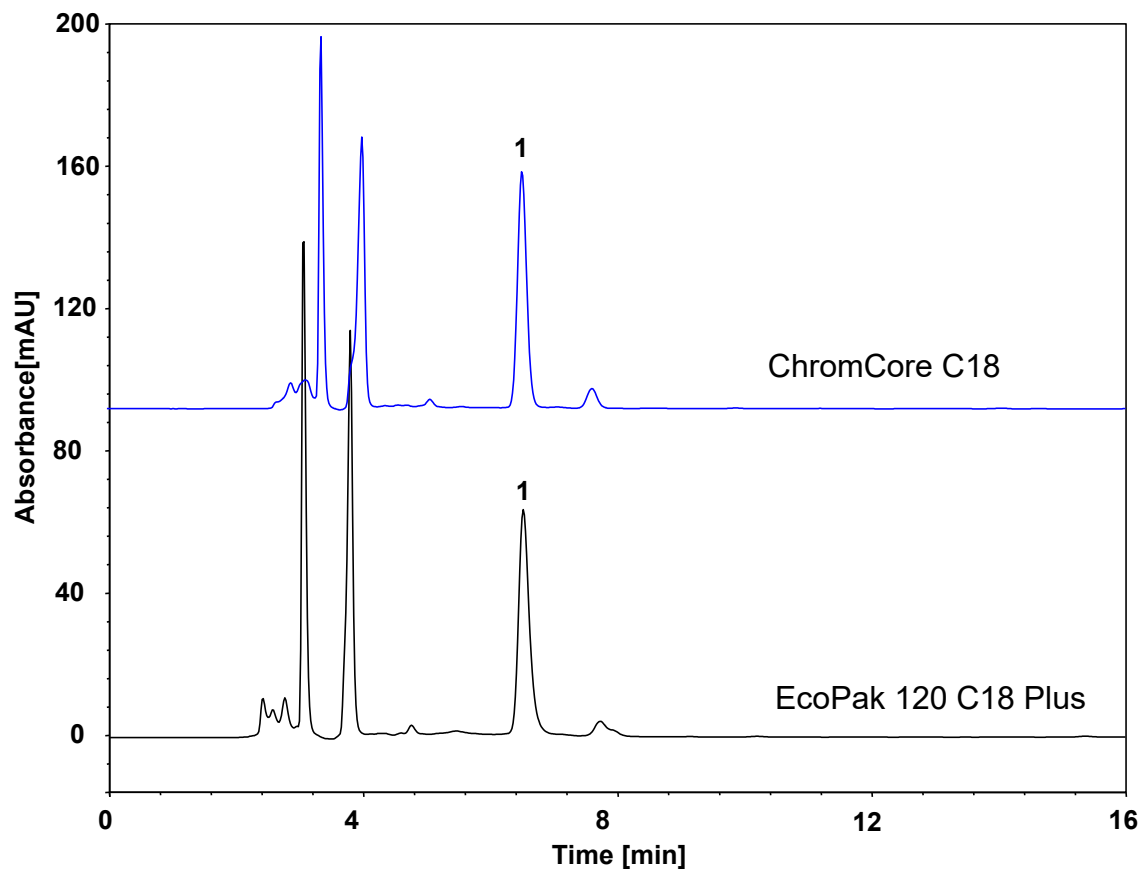
Column: ChromCore C18, 5 μ m
Dimension: 4.6 \times 250 mm
Mobile Phase: 85/15 v/v 0.2%醋酸水溶液/乙腈
Flow Rate: 1.0 mL/min
Temperature: 30 $^{\circ}$ C
Injection: 10 μ L
Detection: UV 258 nm
Sample: 知母
Peak: 1. 芒果苷

知母-芒果苷 (EcoPak 120 C18 Plus) (中国药典)



Column: EcoPak 120 C18 Plus, 5 μ m
Dimension: 4.6 \times 250 mm
Mobile Phase: 85/15 v/v 0.2%醋酸水溶液/乙腈
Flow Rate: 1.0 mL/min
Temperature: 30 $^{\circ}$ C
Injection: 10 μ L
Detection: UV 258 nm
Sample: 知母
Peak: 1. 芒果苷

知母-芒果苷-对比图谱 (中国药典)



Columns: EcoPak 120 C18 Plus/ChromCore C18, 5 μ m
Dimension: 4.6 \times 250 mm
Mobile Phase: 85/15 v/v 0.2%醋酸水溶液/乙腈
Flow Rate: 1.0 mL/min
Temperature: 30 $^{\circ}$ C
Injection: 10 μ L
Detection: UV 258 nm
Sample: 知母
Peak: 1. 芒果苷

色谱柱	保留时间 (min)	拖尾因子	理论塔板数
EcoPak 120 C18 Plus	6.119	1.28	7339
ChromCore C18	6.122	1.09	9539

测试要求: 中国药典要求芒果苷的理论塔板数不得小于6000

结果: 两款色谱柱分离和柱效均可以达到测试要求